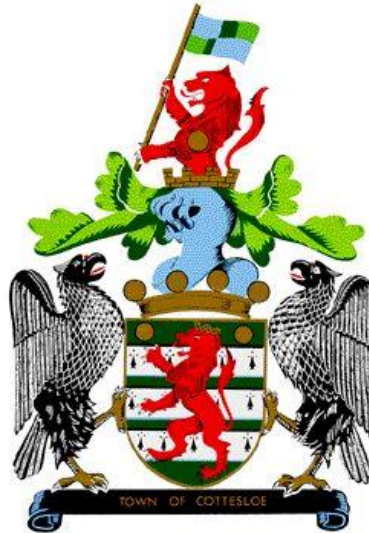


# TOWN OF COTTESLOE



## BIKE PLANNING COMMITTEE

# UNCONFIRMED MINUTES

COMMITTEE ROOM, COTTESLOE CIVIC CENTRE  
109 BROOME STREET, COTTESLOE  
4.00PM, TUESDAY 23 OCTOBER 2018

**MAT HUMFREY**  
Chief Executive Officer

29 October 2018



## TABLE OF CONTENTS

1. Declaration of Meeting Opening / Announcement of Visitors.....	4
2. Acknowledgement of Traditional Owners of the Lands .....	4
3. Attendance.....	4
4. Confirmation of minutes from previous meeting .....	4
5. Declaration of interests.....	4
6. Reports of officers .....	4
6.1 Public Transport Authority Demonstration Project.....	5
7. Other Business.....	9
7.1 Shared Path – Motion by Mark Powell .....	9
7.2 Local street zone images.....	9
7.3 Bike parking at cafes around Cottesloe – strategic approach.....	9
8. ACTION LIST.....	9
9. Next meeting.....	9
10. MEETING CLOSURE .....	9

**1. DECLARATION OF MEETING OPENING / ANNOUNCEMENT OF VISITORS**

Cr Sadler declared the meeting open at 4:06pm.

**2. ACKNOWLEDGEMENT OF TRADITIONAL OWNERS OF THE LANDS**

Cr Sadler acknowledged the traditional owners of the lands, past and present.

**3. ATTENDANCE****Committee Members Present**

Cr Helen Sadler	Presiding Member, Elected Member
Mr Mark Powell	Community Representative
Mr James Atkinson	Community Representative

**Officers Present**

Mr Shaun Kan	Manager of Engineering Services
Mrs Denise Tyler-Hare	Manager of Projects
Ms Ann-Marie Donkin	Governance Officer

**Apologies**

Cr Lorraine Young	Elected Member
Mr Mat Humfrey	Chief Executive Officer

**4. CONFIRMATION OF MINUTES FROM PREVIOUS MEETING**

Moved: Mr Mark Powel      Seconded: Mr James Atkinson

**That the Minutes of the Bike Planning Committee meeting held 4 September 2018 be confirmed as a true and accurate record.**

**That the Discussion Notes of the BPC site walk held 20 September 2018 be confirmed as a true and accurate record.**

**Carried (3/0)**

**5. DECLARATION OF INTERESTS**

Nil

**6. REPORTS OF OFFICERS**

## 6.1 Public Transport Authority Demonstration Project

<b>File Ref:</b>	<b>SUB/2535</b>
<b>Attachments:</b>	<b>Wayfinding preliminary scheme (provided by Mark Powell)</b>
<b>Responsible Officer:</b>	<b>Shaun Kan, Manager Engineering Services</b>
<b>Author:</b>	<b>Denise Tyler-Hare, Project Manager</b>
<b>Proposed Meeting Date:</b>	<b>23 October 2018</b>
<b>Author Disclosure of Interest:</b>	<b>Nil</b>

---

### SUMMARY

The Committee is requested to review the officer recommendation in proceeding with the PTA demonstration project with respect to wayfinding and make a recommendation to Council to proceed with these works.

### BACKGROUND

At the 20 September 2018 walking meeting, the Bike Planning Committee walked Cottesloe Town Centre, to identify projects for the demonstration project. Three key concepts have been generated and are listed in order of preference below:

1. **Improving cycling access around the Town Centre to Cottesloe Station** – refer attached sketch (East of Cottesloe Train Station). The main aim is to improve safety for cyclists/pedestrians through creating a shared space/low speed environment from Forrest Street to Jarrad Street, along Railway Street. This excludes works on Public Transport Authority (PTA) land that will be financed by a separate source. The Administration will liaise with PTA on the possibilities of this initiative extending into their reserve.

Low speed environments on Railway would tie in well with the existing low speeds on Station and Napoleon Streets (both legislated speeds and actual speeds).

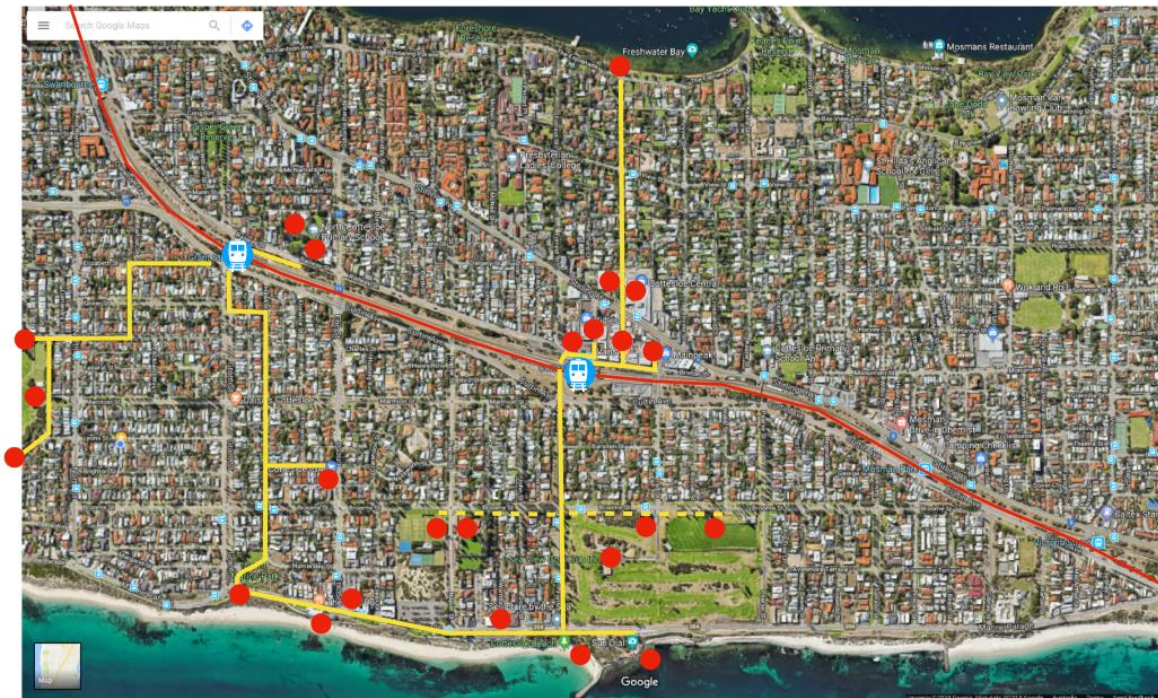
Shared zone on Railway Street was discussed in the context of the Station Street upgrades and enhancing connectivity to the train station.

Previous consultation regarding Station Street and Napoleon St discussed.



2. **Wayfinding project around Cottesloe**, this involves using existing bike paths and quiet streets combined with Cottesloe branded way-finding signs and sharrow (Road Sharing arrows) on streets. This cost effective initiative has the potential to promote cycling. More way-finding signage could be added with the implementation of the future Cottesloe Bike Plan.

**PTA Cycling Demonstration Project  
Way-Finding Signs to significant Cottesloe Points of Interest**



3. **Improving cycle access from Marmion Street at the intersection of Marmion Street, Forrest Street and Curtin Avenue.** This would incorporate the use of a raised plateau, or similar, to get people from there to the shared path on Forrest Street.

These options have subsequently been discussed with the PTA, with the following feedback provided:

1. Option 1 is going to be difficult to implement from a community/political perspective, and for that reason, for the PTA, it represents a fatal flaw, as they are looking for small simple projects that have a high probability of delivering successful outcomes. However, suggestions of alternative options to improve this area generated from this discussion with the PTA include:
  - a. Look at reducing the overall speed from Forrest to Jarrad Streets along Railway Street to 30km/h, with treatment, e.g. Beaufort St, Mount Lawley or Northbridge. This will help with the universal access crossing as it would ensure drivers slow down before they reach this point. Note that as it is a bus route, the PTA wouldn't accept plateaus; and,
  - b. Contraflow riding on Napoleon Street could be explored by the Town of Cottesloe in conjunction with Main Roads Western Australia (MRWA) that could be achieved with line marking and signage. Angled parking may be considered unsafe in this solution. It could be more effective for Napoleon Street to be made into a pedestrian zone.
2. The PTA are interested in the wayfinding solution that improves directing commuters to the station. Minor upgrades could also be incorporated to ensure compliance with the *Disability Discrimination Act 1992* and improve connections to the Curtin Avenue Principal Shared Pathway (PSP) constructed by MRWA. These works could be achieved quite easily, for a low value, with a high return. The PTA are doing something similar in North Fremantle.

Guidelines are being developed for treatments and wayfinding with the completion of each demonstration project. This is expected to provide a streamline approach when identifying scopes for future works funded by this demonstration program.

## STRATEGIC IMPLICATIONS

### *Strategic Community Plan 2013 to 2023*

Priority Area One	Protecting and enhancing the wellbeing of residents and visitors.
Priority Area Two	Achieving connectivity between east and west Cottesloe.
Priority Area Five	Providing sustainable infrastructure and community amenities.

## POLICY IMPLICATIONS

There are no anticipated policy implications arising from the officer recommendation.

## STATUTORY ENVIRONMENT

*Local Government Act 1995*

*Local Government Regulations 1996*

**FINANCIAL IMPLICATIONS**

The PTA will fund the conceptual and detailed design, working closely with the Town of Cottesloe. In terms of the implementation, the PTA would fund 50% of the construction works. It is anticipated that a cost estimate at the concept stage would be completed, and appropriate funding sought/negotiated with the PTA at this stage.

**STAFFING IMPLICATIONS**

There are no anticipated staffing implications arising from the officer recommendation.

**SUSTAINABILITY IMPLICATIONS**

There are no anticipated sustainability implications arising from the officer recommendation.

**CONSULTATION**

- Bike Planning Committee
- Town of Cottesloe Staff

**STAFF COMMENT**

Officers have considered the proposal and recommend that the administration work with the PTA to progress the proposal to concept design to determine anticipated costs.

In order to do this, the Committee would need to consider updating the attached plan around wayfinding from key areas to the stations. The administration would provide information to the PTA on proposed projects.

**VOTING**

Simple Majority

**OFFICER RECOMMENDATION**

Moved: Mr Powell      Seconded: Mr Atkinson

**That the Bike Planning Committee recommend to council;**

**That the Council APPROVE that the Administration work with the Public Transport Authority to progress Option Two, wayfinding to and from all stations, to concept design, as soon as practical for the works to be completed within the 2018/19 financial year.**

**Carried (3/0)**



## 7. OTHER BUSINESS

### 7.1 Shared Path – Motion by Mark Powell

Moved: Cr Sadler      Seconded: Mr Powell

That the Bike Planning Committee recommend to council;

That the Council **APPROVE** that the Administration undertake a Road Safety Audit of Marine Parade and Railway Street roads including shared paths for application for grant funding, including black spot.

Carried (3/0)

### 7.2 Local street zone images

The committee discussed the images, focusing on:

- Liveable streets – not just thoroughfares for traffic
- Using various street scaping methods on entry to slow traffic – avoiding the use of signage
- Providing safer streets for young riders and for those who's cycling journey starts some distance from a bike route.

### 7.3 Bike parking at cafes around Cottesloe – strategic approach

The committee discussed various café locations around Cottesloe where additional bike racks could be installed.

## 8. ACTION LIST

The action list was reviewed and updated.

## 9. NEXT MEETING

Unless an urgent meeting is required a date for the next meeting will not be determined until early 2019.

## 10. MEETING CLOSURE

Cr Sadler closed the meeting at 5:13pm