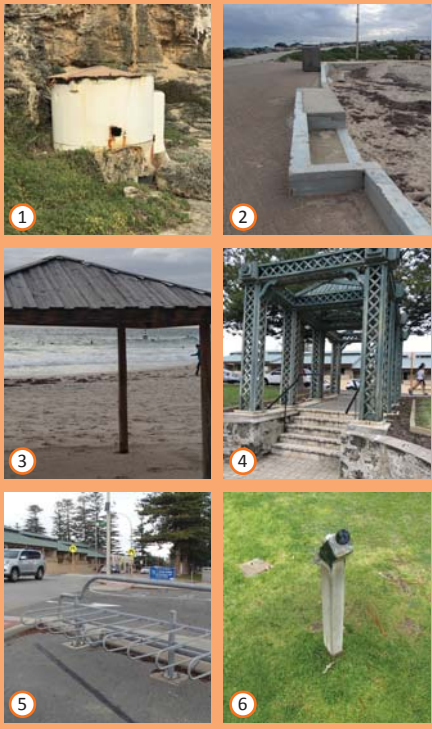


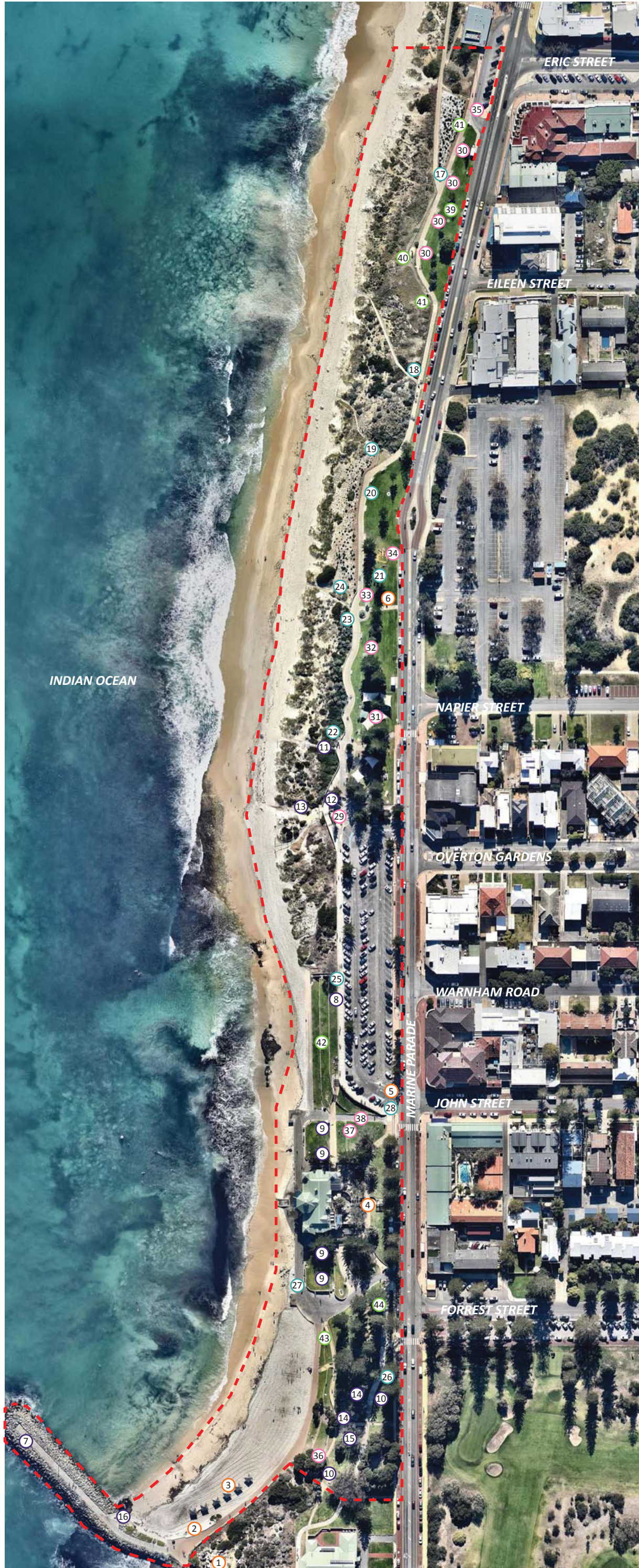
IMMEDIATE REMOVAL
TO BE COMPLETED WITH SUMMER WORKS



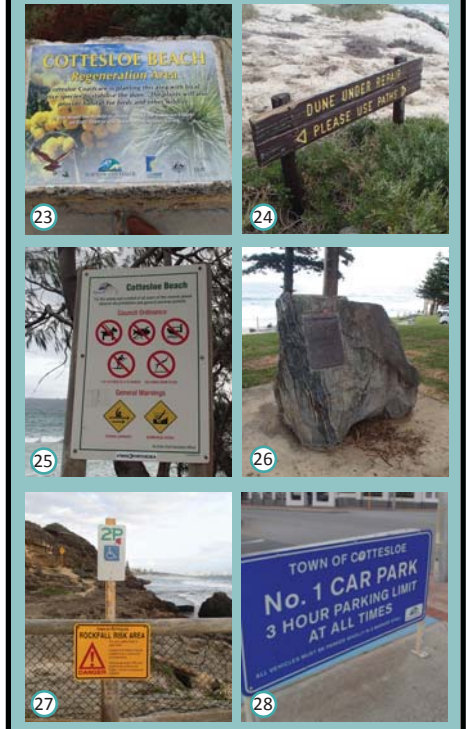
IMMEDIATE REPAIR
TO BE REPLACED / UPGRADED ULTIMATELY



RELOCATE / RE-INTERPRET
TO BE STAGED WITH SIGNAGE STRATEGY



RELOCATE / RE-INTERPRET
TO BE STAGED WITH SIGNAGE STRATEGY



REPLACE / UPGRADE
TO BE STAGED WITH FUTURE WORKS, NOT CRITICAL



RETAIN
TO BE RETAINED AND PROTECTED DURING CONSTRUCTION

