



ArborCam Acquisition 2023

Town of Cottesloe

Report No. J22743

26 May 2023

Company Name: ArborCarbon Pty Ltd

ACN: 145 766 472

ABN: 62 145 766 472

Address: ROTA Trans 1, Murdoch University, Murdoch WA 6150

Post: PO Box 1065 Willagee Central, WA 6163

Phone: +61 408 907 152

Website: www.arborcarbon.com.au

ArborCarbon acknowledges the Traditional Owners and Custodians of the land on which we live and work and pays respect to Elders past, present and future.

DOCUMENT QUALITY ASSURANCE

Project Title	ArborCam Acquisition 2023		
Status	External Draft		
Revision version	Rev A		
Author(s)	Briony Williams		
Reviewed by	Paul Barber		
Project Manager	Briony Williams	Project Number	J22743
Filename	AC_Report_TownofCottesloe_VegetationMapping2023_230526	Saved on	2026-05-27

REVISION SCHEDULE

Revision	Revision Details	Date	Approved by
A	Draft for Client Review	26/05/2023	Paul Barber

DISCLAIMER

ArborCarbon Pty Ltd has prepared this document using data and information supplied from Town of Cottesloe and other individuals and organisations, who have been referred to in this document.

This document is confidential and intended to be read in its entirety, and sections or parts of the document should therefore not be read and relied on out of context. The sole use of this document is for Town of Cottesloe only for which it was prepared.

While the information contained in this report has been formulated with due care, the author(s) and ArborCarbon Pty Ltd take no responsibility for any person acting or relying on the information contained in this report, and disclaim any liability for any error, omission, loss or other consequence which may arise from any person acting or relying on anything contained in this report. This report is the property of ArborCarbon Pty Ltd and should not be altered or reproduced without the written permission of ArborCarbon Pty Ltd.

Any conclusion and/or recommendation contained in this document reflect the professional opinion of ArborCarbon Pty Ltd and the author(s) using the data and information supplied. ArborCarbon Pty Ltd has used reasonable care and professional judgement in its interpretation and analysis of data in accordance with the contracted Scope of Works.

Table of Contents

Executive Summary.....	5
1 Introduction	6
2 Methods	7
2.1 Airborne Imagery Acquisition	7
2.2 Data processing and analysis	Error! Bookmark not defined.
3 Results and Discussion	9
3.1 High-resolution imagery.....	9
3.2 Vegetation Cover.....	14
3.2.1 Council Wide	14
3.2.2 Wards	15
4 Conclusion and Recommendations.....	19
Appendix A – Ward land cover pie graphs.....	20

List of Figures

Figure 1: Ward boundaries of the Town of Cottesloe.....	8
Figure 2: High-resolution RGB imagery of the Town of Cottesloe.....	9
Figure 3: False colour composite over the Town of Cottesloe showing vegetation (red pixels).	10
Figure 4: Height-stratified vegetation dataset of the Town of Cottesloe, with each stratum displayed in a different colour.	11
Figure 5: Radiometrically corrected thermal ortho land surface temperature of the Town of Cottesloe ranging from 33°C (blue) to 64°C (red).	12
Figure 6: Vegetation Condition Index (VCI) of Town of Cottesloe ranging from low (red) to high (purple). .	13
Figure 7: Close-up image of each of the datasets generated for the Town of Cottesloe: A) High-resolution RGB imagery; B) False Colour Composite (FCC) showing vegetation in red; C) Height-stratified vegetation cover, with each stratum displayed as a different colour; D) Land Surface Temperature (LST) ranging from 33°C (blue) to 64°C (red); and E) Vegetation Condition Index (VCI) ranging from low (red) to high (purple).....	14
Figure 8: Land cover classification proportion (%) (left) and hectare coverage (right) of the entire Town of Cottesloe LGA boundary.	15
Figure 9: Bar graph illustrating the percentage of each ward covered by each land cover class.....	15
Figure 10: Bar graph illustrating the percentage of each ward covered by canopy (vegetation >3m in height).	16
Figure 11: The proportion of the total LGA canopy area contained in each ward.	17

List of Tables

Table 1: Change in proportion of land cover of the total LGA since 2020 (%). Green indicates increase, red indicates decrease.....	15
Table 2: Change in proportion of land cover of the Central Ward since 2020 (%). Green indicates increase, red indicates decrease.	17
Table 3: Change in proportion of land cover of the East Ward since 2020 (%). Green indicates increase, red indicates decrease.....	17
Table 4: Change in proportion of land cover of the North Ward since 2020 (%). Green indicates increase, red indicates decrease.....	18
Table 5: Change in proportion of land cover of the South Ward since 2020 (%). Green indicates increase, red indicates decrease.....	18

Executive Summary

ArborCarbon was engaged to acquire, process and deliver remotely sensed data over the Town of Cottesloe in March 2023. High-resolution airborne ArborCam™ imagery was acquired over the City with cloudless conditions between 13:00 and 14:00 on the 14th of March 2023. Height-stratified vegetation cover statistics were calculated in ward boundaries and across the entire LGA.

Overall, canopy cover has decreased 7.7% from March 2020 to March 2023. This is a decrease of 4.3 ha of canopy cover, from 14.1% (55.2 ha) in 2020 to 13% (51 ha) in 2023. This decrease was observed throughout the entire LGA, and within each ward. Vegetation cover in all height strata levels has decreased, except for the low vegetation (0 – 3m in height). The most significant decrease was in tall vegetation (>15m in height, 18.4%). This trend could reflect numerous new plantings of young trees over the last few years which are contributing to the 0-3m height category. It may also be due to seasonal fluctuations in health of low scrubby vegetation, particularly by coast. The loss observed in tall canopy is concerning, and is representative of loss of mature trees, possibly due to natural senescence or as the result of development. The Town should continue to increase planting and monitor trends and understand that recent plantings are unlikely to contribute to canopy cover for a number of years but may be reflected in lower height strata.

This study provides an accurate assessment of vegetation cover and change over time, in the Town of Cottesloe.

The main findings of this report are:

- The total vegetation cover in the Town of Cottesloe is 33.1% of the total Town area of 393 ha, compared to 32.4% in 2020.
- Canopy (vegetation 3m and above) covered 13% of the Council, compared to 14.1% in 2020.
- The East Ward had the greatest canopy cover as a proportion of ward area (17.2%), while the South Ward had the least (10.3%). In terms of contribution to overall Town canopy, the East Ward contributed the most (29%).
- All wards experienced a decrease in canopy cover and an increase in low vegetation.

Based on the findings of this analysis, we recommend the following:

1. Extract vegetation and canopy cover statistics from more granular boundaries, such as Council managed land (parks and streets) and privately owned land, or Land Use categories according to the Town of Cottesloe planning controls. This may provide more insight into where most loss is occurring.
2. Airborne ArborCam vegetation surveys over the Town of Cottesloe should be conducted on an annual or periodic basis to track temporal changes in vegetation cover and condition and the data used to monitor and set achievable targets for future canopy cover and condition.
3. Continue to investigate mechanisms to prevent the loss of existing canopy cover.

1 Introduction

The Town of Cottesloe (the Town) covers approximately 393ha (3.9km²) of land north of Fremantle, extending to the west of Stirling Highway. The Town consists of four wards: North, East, South and Central.

In March 2020, ArborCarbon undertook vegetation and canopy mapping for the Town of Cottesloe and identified canopy cover (vegetation >3m in height) as 14%.

ArborCarbon was engaged to acquire, process and deliver remotely sensed data over the Town of Cottesloe in March 2023. This has been used to determine current canopy cover, and quantify canopy change, and provide insight into where the Town should be targeting their efforts to increase canopy. ArborCarbon maintains a unique 11-band airborne multispectral camera system (ArborCam) optimised for the accurate detection of vegetation and subtle changes in vegetation condition. The ArborCam was used to acquire high resolution imagery to accurately quantify vegetation and canopy cover. Vegetation cover statistics were extracted and categorized into different height strata and quantified across each ward and the entire LGA boundary. Vegetation cover statistics are compared to 2020 statistics to determine where vegetation loss and gain has occurred.

2 Methods

2.1 Airborne Imagery Acquisition

High-resolution airborne ArborCam imagery was acquired over the City with cloudless conditions between 13:00 and 14:00 on the 14th of March 2023. Imagery was acquired for this project with the ArborCam system with a ground sample distance (GSD) ranging from 8 cm/pixel to 25 cm/pixel dependent on the spectral band. The thermal imagery was acquired on the 3rd of April 2023 with a GSD of 100 cm/pixel. The maximum temperature recorded on the 3rd of April at Swanbourne WA (BoM reference: 009215) was 25.8°C (bom.gov.au).

Height-stratified vegetation cover statistics were calculated in ward boundaries (Figure 1) and across the entire LGA.



Figure 1: Ward boundaries of the Town of Cottesloe.

3 Results and Discussion

3.1 High-resolution imagery

The acquired data was processed to produce high-resolution RGB imagery (Figure 2), False Colour Composite (FCC) imagery (Figure 3), a height-stratified vegetation cover dataset (Figure 4), land surface temperature (°C) (Figure 5) and vegetation condition index (VCI) (Figure 6) across the 393 ha of the Town of Cottesloe.

Examples of close-up imagery derived from each of these datasets and the different layers of information they provide appear in Figure 7.



Figure 2: High-resolution RGB imagery of the Town of Cottesloe.



Figure 3: False colour composite over the Town of Cottesloe showing vegetation (red pixels).

The FCC dataset was derived from a 3-band subset of the multispectral imagery (NIR, red and green). FCC imagery is commonly used in remote sensing to illustrate vegetation cover, which is displayed as red pixels.

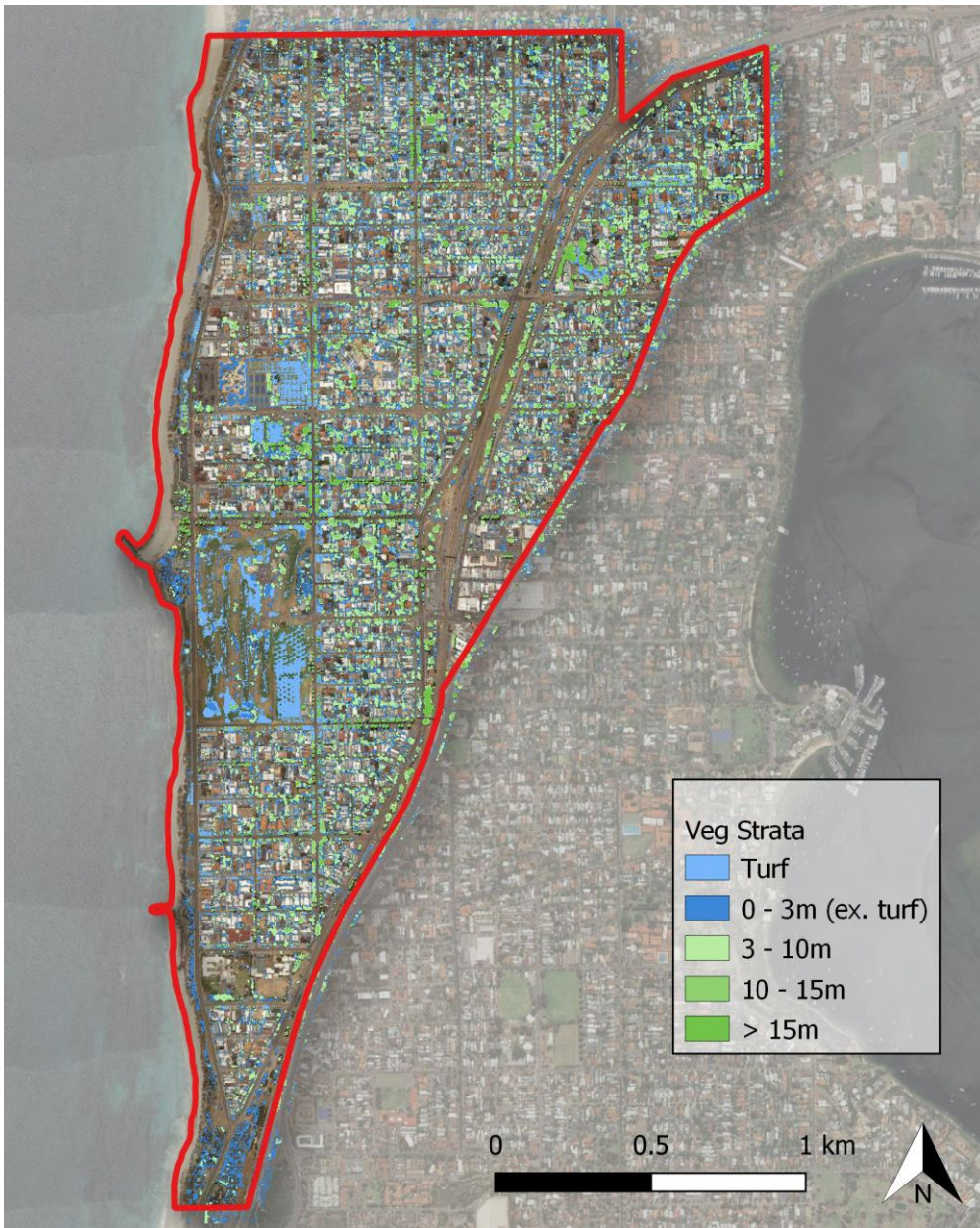


Figure 4: Height-stratified vegetation dataset of the Town of Cottesloe, with each stratum displayed in a different colour.

The height-stratified vegetation cover dataset (Figure 4) is comprised of specific height strata coloured as follows: turf (light blue), 0-3m blue, 3-10m light green, 10-15m green and >15m dark green. This colour scheme is used in all illustrations of the height-stratified dataset in this report.

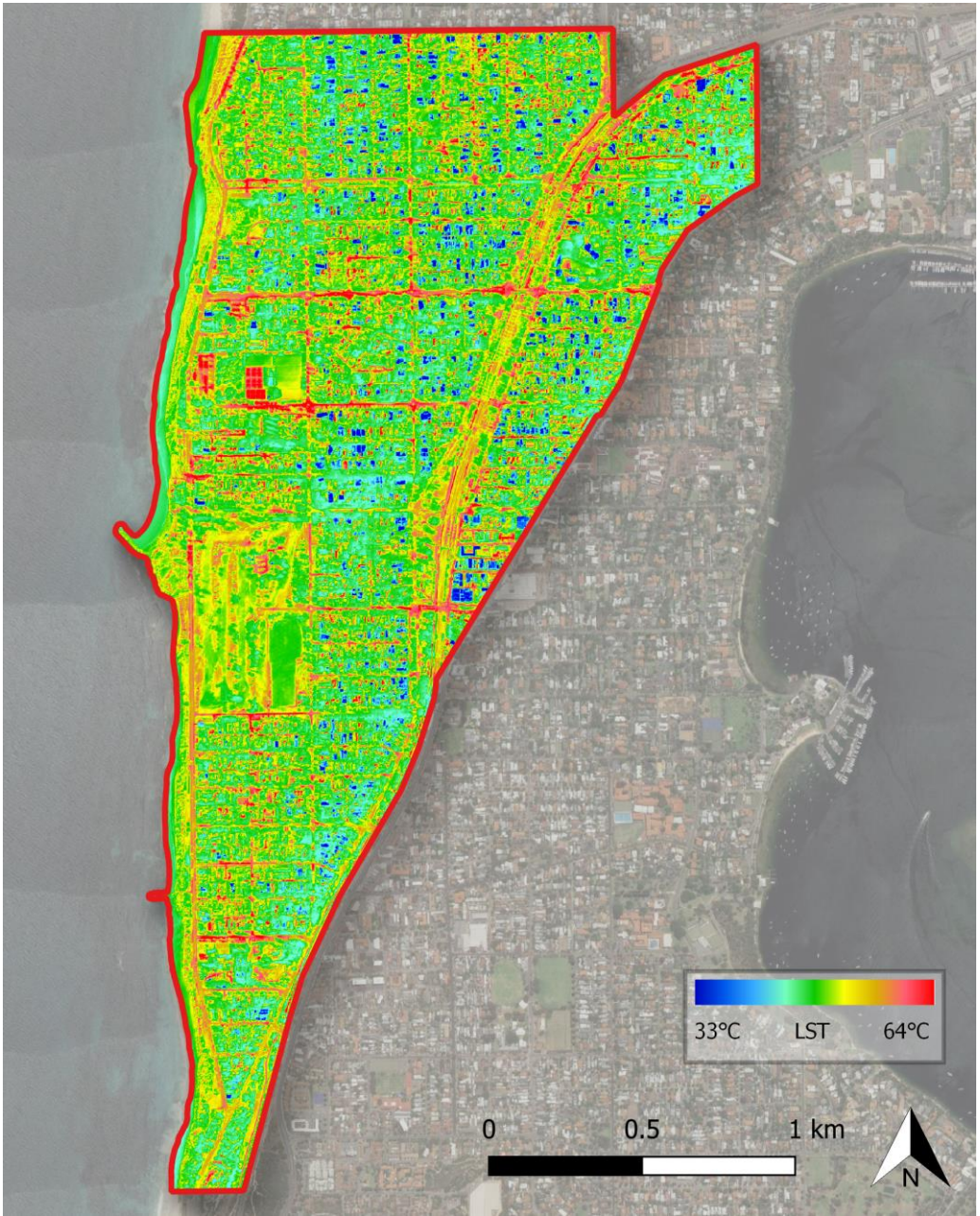


Figure 5: Radiometrically corrected thermal ortho land surface temperature of the Town of Cottesloe ranging from 33°C (blue) to 64°C (red).



Figure 6: Vegetation Condition Index (VCI) of Town of Cottesloe ranging from low (red) to high (purple).

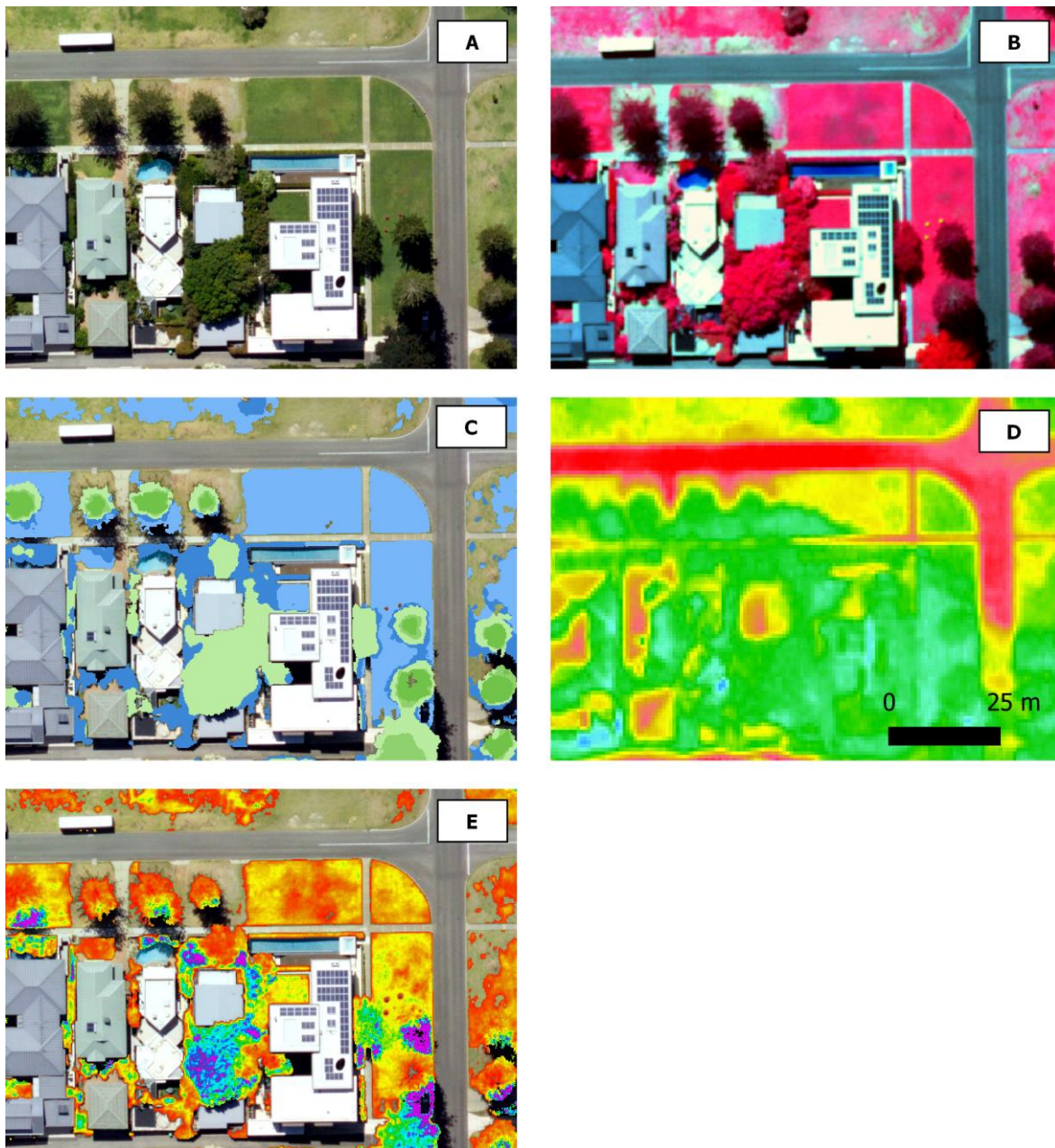


Figure 7: Close-up image of each of the datasets generated for the Town of Cottesloe: A) High-resolution RGB imagery; B) False Colour Composite (FCC) showing vegetation in red; C) Height-stratified vegetation cover, with each stratum displayed as a different colour; D) Land Surface Temperature (LST) ranging from 33°C (blue) to 64°C (red); and E) Vegetation Condition Index (VCI) ranging from low (red) to high (purple).

3.2 Vegetation Cover

Height stratified vegetation cover was calculated for each ward and the Town as a whole.

3.2.1 Council Wide

The Town has an entire area of 393 ha. Approximately a third (33.1%, 129 ha) of the Council area was covered by vegetation. The remaining 66.9% (263 ha) was non-vegetated surfaces, such as buildings, roads, exposed soil and dead grass (Figure 8). Vegetation classified as turf occupied 6.5% (25.7 ha) of the area, and 13.5% (53.2 ha) was classified as vegetation 0-3m in height. **Canopy (vegetation 3m and above) covered 13% (51 ha) of the Town.**

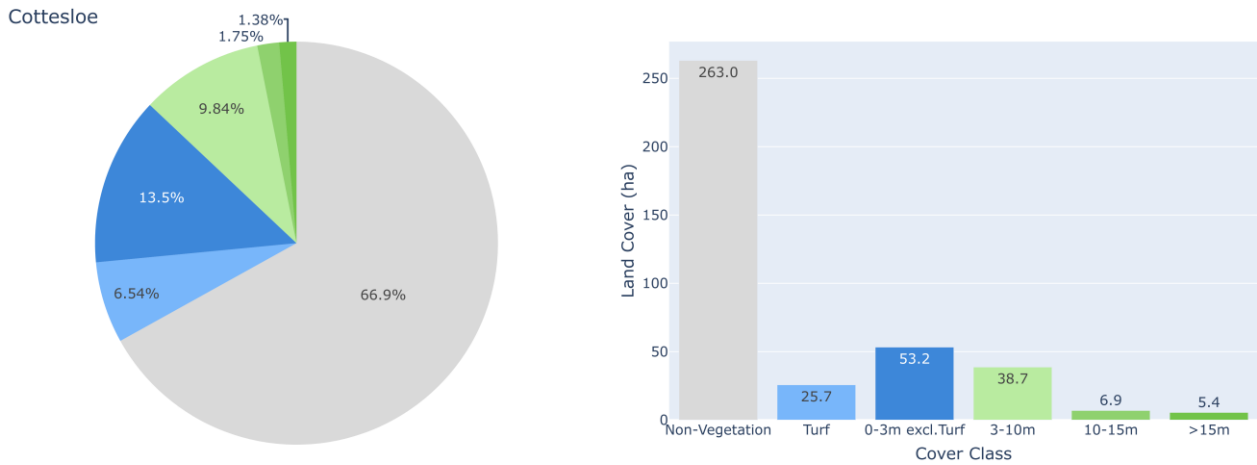


Figure 8: Land cover classification proportion (%) (left) and hectare coverage (right) of the entire Town of Cottesloe LGA boundary.

3.2.1.1 Change 2020 – 2023

Overall, vegetation cover has slightly increased from 2020 to 2023 (Table 1). This is a result of increased proportional cover of low vegetation (0-3m height category). Vegetation cover in this category increased from 11.2% to 13.5%, a 17.8% increase. **However, tall vegetation cover has decreased, resulting in an overall reduction of canopy cover across the LGA.** Canopy cover decreased from 14.1% in 2020 to 13% in 2023, a 7.7% decrease.

Table 1: Change in proportion of land cover of the total LGA since 2020 (%). Green indicates increase, red indicates decrease.

Class		Proportional Change (%) 2020 - 2023							All Veg	Canopy	Non-Canopy Veg
		Non-Veg	Turf	0-3m	3-10m	10-15m	>15m				
LGA	2020 (%)	67.7	6.8	11.5	10.5	1.9	1.7	32.3	14.1	18.3	
	2023 (%)	66.9	6.5	13.5	9.8	1.7	1.4	33.1	13.0	20.1	
	Change (%)	-1.1	-3.5	17.8	-6.1	-7.3	-18.4	2.2	-7.7	9.9	

3.2.2 Wards

Proportional land cover for each ward is presented in Figure 9. Land cover for each ward is also presented as pie graphs in Appendix A.

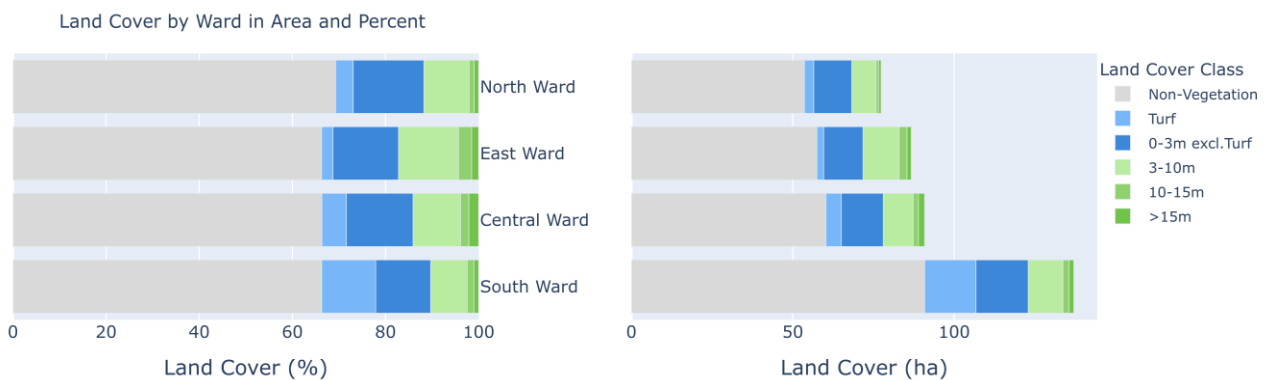


Figure 9: Bar graph illustrating the percentage of each ward covered by each land cover class.

Canopy cover (vegetation 3m and above) was calculated for each ward within the Town of Cottesloe (Figure 10). The East Ward had the highest proportional canopy cover (17.2%) while the South Ward had the lowest (10.3%).

Additionally, canopy of each ward as a proportion of the total Town-wide canopy cover was calculated (Figure 11). This shows how much each ward contributes to the Town’s total canopy cover. The East Ward contains nearly a quarter of the Town’s canopy cover (22.5%, 14.9 ha) while the North Ward contributed the least (17.9%, 9.1 ha).

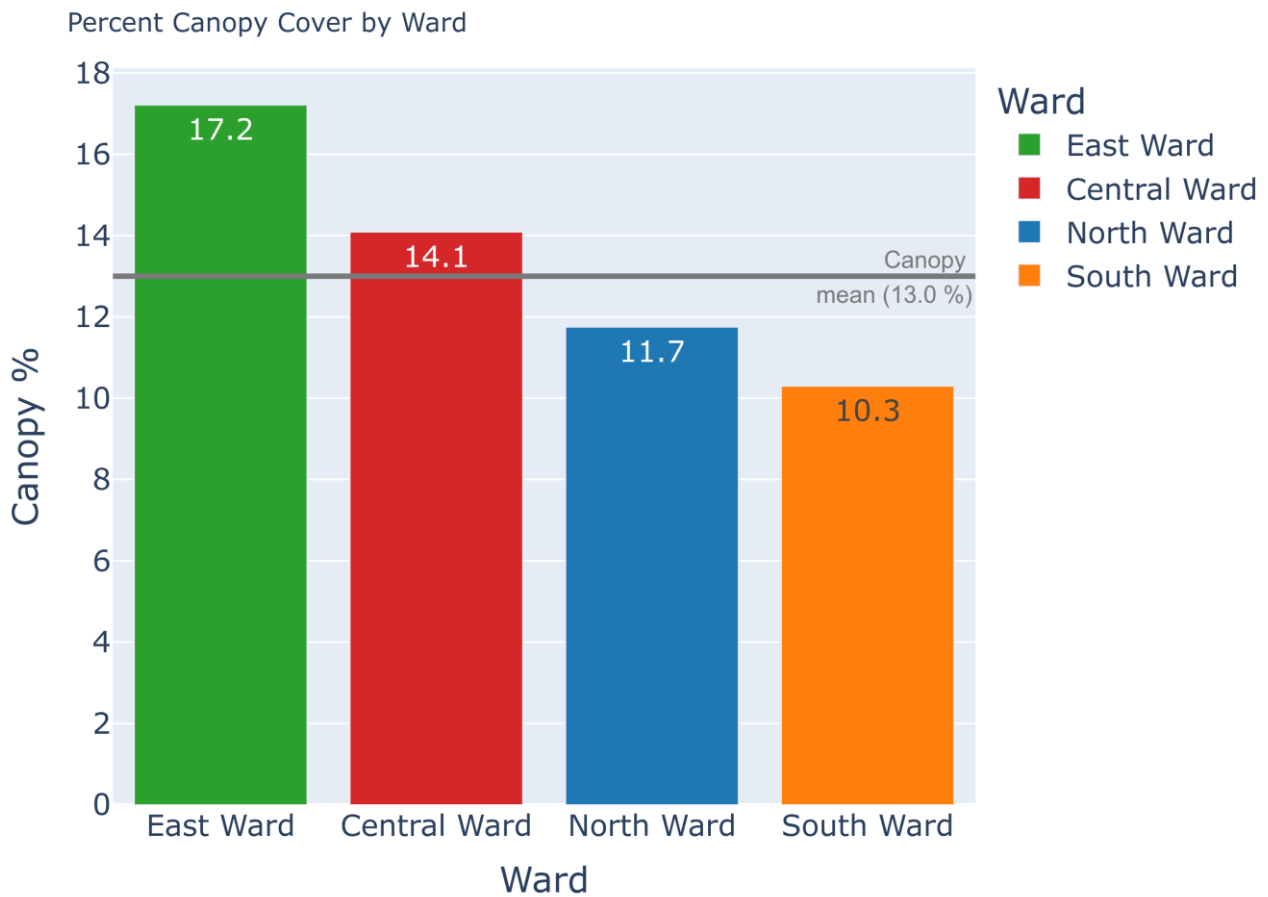


Figure 10: Bar graph illustrating the percentage of each ward covered by canopy (vegetation >3m in height).

Distribution of Canopy Cover by Ward

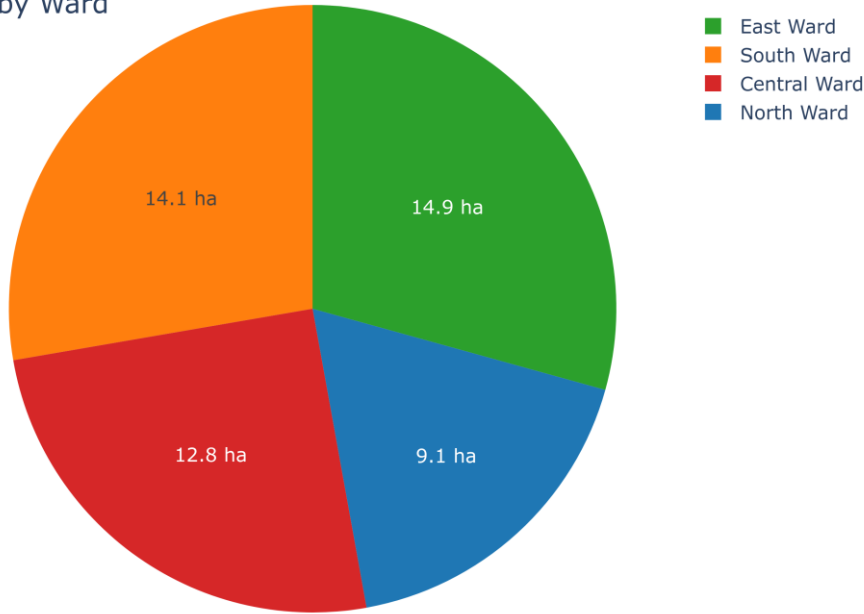


Figure 11: The proportion of the total LGA canopy area contained in each ward.

3.2.2.1 Change 2020 – 2023

The general trend across the LGA was observed across each ward as well (see tables below). In each ward, vegetation 0-3m in height increased, resulting in an increase in all vegetation and non-vegetation aggregates as well. However, taller vegetation has decreased, resulting in an overall decline in canopy cover across all wards.

Table 2: Change in proportion of land cover of the Central Ward since 2020 (%). Green indicates increase, red indicates decrease.

		Proportional Change (%) 2020 - 2023								
Class		Non-Veg	Turf	0-3m	3-10m	10-15m	>15m	All Veg	Canopy	Non-Canopy Veg
Central Ward	2020 (%)	67.4	5.8	11.5	10.9	1.9	2.5	32.6	15.3	17.3
	2023 (%)	66.3	5.2	14.3	10.2	1.8	2.1	33.7	14.1	19.6
	Change (%)	-1.5	-8.8	24.3	-6.7	-7.1	-15.5	3.2	-8.2	13.3

Table 3: Change in proportion of land cover of the East Ward since 2020 (%). Green indicates increase, red indicates decrease.

		Proportional Change (%) 2020 - 2023								
Class		Non-Veg	Turf	0-3m	3-10m	10-15m	>15m	All Veg	Canopy	Non-Canopy Veg
East Ward	2020 (%)	67.9	2.4	11.4	13.4	2.9	1.9	32.1	18.2	13.8
	2023 (%)	66.3	2.4	14.1	12.9	2.8	1.5	33.7	17.2	16.5
	Change (%)	-2.5	-0.2	23.7	-4.2	-3.0	-19.8	5.2	-5.6	19.5

Table 4: Change in proportion of land cover of the North Ward since 2020 (%). Green indicates increase, red indicates decrease.

		Proportional Change (%) 2020 - 2023								
Class		Non-Veg	Turf	0-3m	3-10m	10-15m	>15m	All Veg	Canopy	Non-Canopy Veg
North Ward	2020 (%)	70.5	3.7	12.9	10.6	1.1	1.2	29.5	12.9	16.6
	2023 (%)	69.3	3.8	15.2	9.7	1.0	1.0	30.7	11.7	19.0
	Change (%)	-1.7	0.4	18.3	-8.2	-8.8	-14.5	4.2	-8.8	14.3

Table 5: Change in proportion of land cover of the South Ward since 2020 (%). Green indicates increase, red indicates decrease.

		Proportional Change (%) 2020 - 2023								
Class		Non-Veg	Turf	0-3m	3-10m	10-15m	>15m	All Veg	Canopy	Non-Canopy Veg
South Ward	2020 (%)	65.9	12.0	10.8	8.3	1.6	1.4	34.1	11.3	22.8
	2023 (%)	66.3	11.6	11.8	7.8	1.4	1.0	33.7	10.3	23.4
	Change (%)	0.6	-3.0	9.0	-5.9	-11.9	-22.7	-1.1	-8.8	2.7

4 Conclusion and Recommendations

Overall, canopy cover has decreased 7.7% from March 2020 to March 2023. This is a decrease of 4.3 ha of canopy cover, from 14.1% (55.2 ha) in 2020 to 13% (51 ha) in 2023. This decrease was observed throughout the entire LGA, and within each ward. Vegetation cover in all height strata levels has decreased, except for the low vegetation (0 – 3m in height). The most significant decrease was in tall vegetation (>15m in height, 18.4%). This trend could reflect numerous new plantings of young trees over the last few years which are contributing to the 0-3m height category. It may also be due to seasonal fluctuations in health of low scrubby vegetation, particularly by coast. The loss observed in tall canopy is concerning, and is representative of loss of mature trees, possibly due to natural senescence or as the result of development. The Town should continue to increase planting and monitor trends and understand that recent plantings are unlikely to contribute to canopy cover for a number of years but may be reflected in lower height strata.

This study provides an accurate assessment of vegetation cover and change over time, in the Town of Cottesloe.

The main findings of this report are:

- The total vegetation cover in the Town of Cottesloe is 33.1% of the total Town area of 393 ha, compared to 32.4% in 2020.
- Canopy (vegetation 3m and above) covered 13% of the Council, compared to 14.1% in 2020.
- The East Ward had the greatest canopy cover as a proportion of ward area (17.2%), while the South Ward had the least (10.3%). In terms of contribution to overall Town canopy, the East Ward contributed the most (29%).
- All wards experienced a decrease in canopy cover and an increase in low vegetation.

Based on the findings of this analysis, we recommend the following:

4. Extract vegetation and canopy cover statistics from more granular boundaries, such as Council managed land (parks and streets) and privately owned land, or Land Use categories according to the Town of Cottesloe planning controls. This may provide more insight into where most loss is occurring.
5. Airborne ArborCam vegetation surveys over the Town of Cottesloe should be conducted on an annual or periodic basis to track temporal changes in vegetation cover and condition and the data used to monitor and set achievable targets for future canopy cover and condition.
6. Continue to investigate mechanisms to prevent the loss of existing canopy cover.

Appendix A – Ward land cover pie graphs

Proportional Land Cover by Ward

