

COTTESLOE FORESHORE TYPICAL FENCING DETAILS

1. LOW KOPPER LOGS



NOTE:
TYPICALLY 300 MM ABOVE THE GROUND AND MADE OF TREATED PINE LOGS OR AN EQUIVALENT MATERIAL

FIGURE 01: LOW KOPPER LOGS

3. POST AND HORSE WIRE



NOTE:
TYPICALLY, THE POSTS ARE 1 M HIGH WITH A SPAN OF 3 M. THE WIRES ARE WHITE PLASTIC-COATED TO PROVIDE VISUAL WARNING, AND THE POSTS ARE MADE OF TREATED PINE LOGS OR AN EQUIVALENT MATERIAL

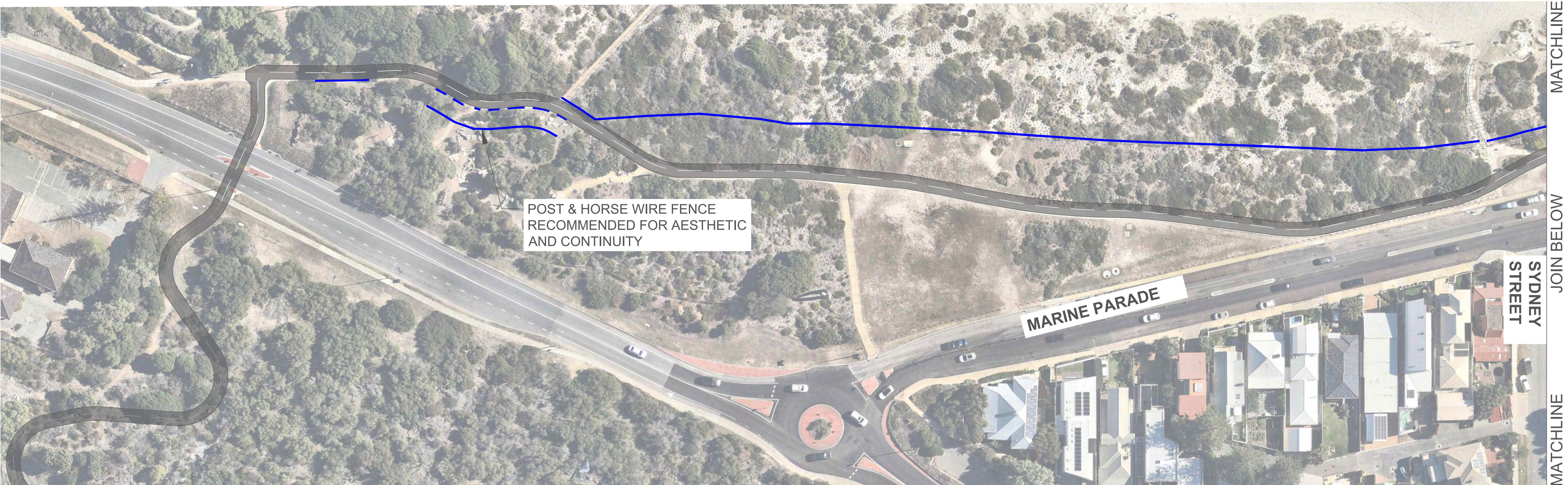
FIGURE 03: POST AND HORSE WIRE

2. TREATED WOOD

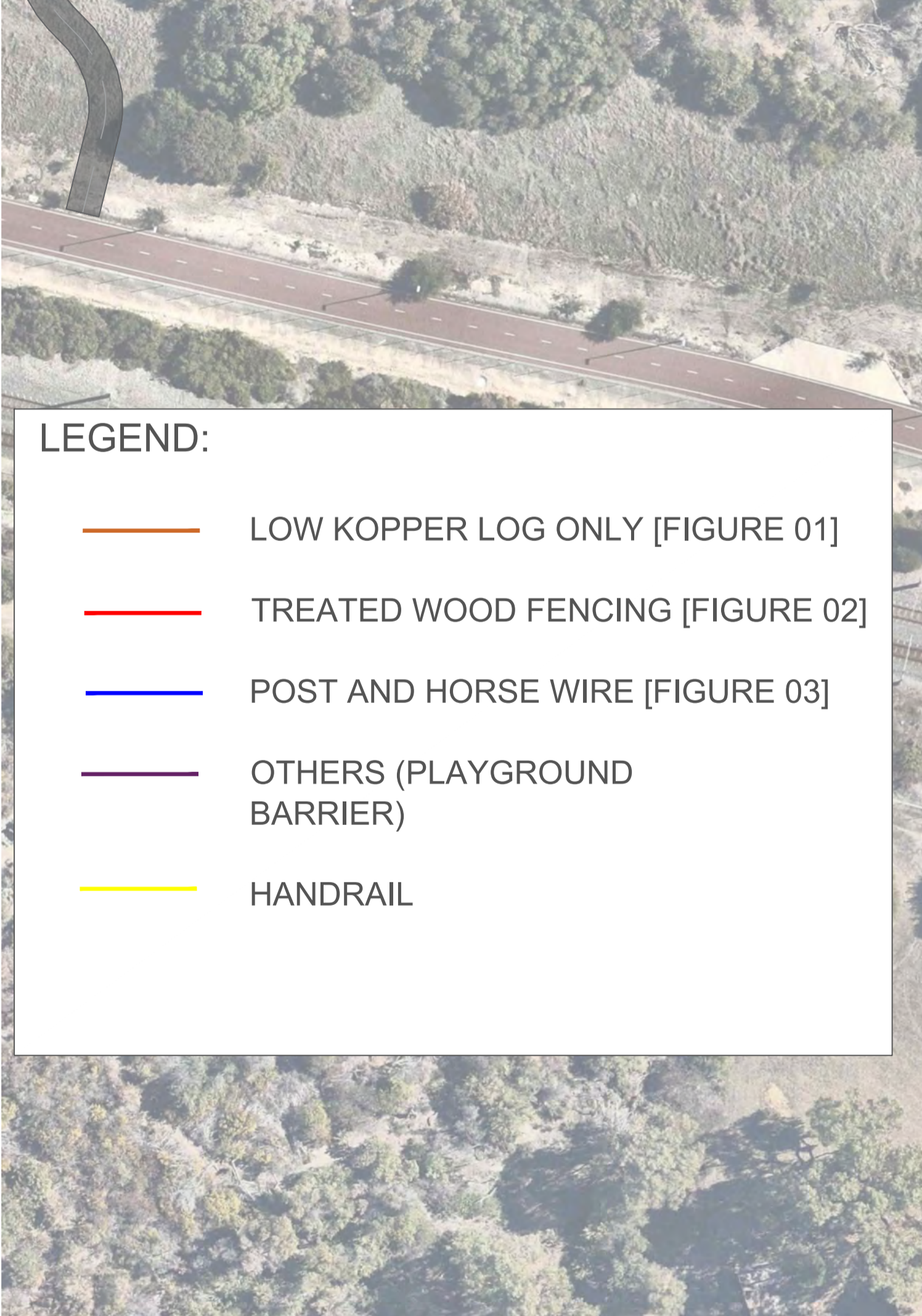


NOTE:
TYPICALLY, THE POSTS ARE 1 M IN HEIGHT WITH A HORIZONTAL BAR CONNECTING THE TOPS OF TWO POSTS SPACED AT 1.5 M. THE POSTS ARE MADE FROM TREATED MERBAU OR AN EQUIVALENT MATERIAL. TWO METAL WIRE SPANS (NOT PLASTIC-COATED) ARE INSTALLED BELOW THE TOP TIMBER RAIL

FIGURE 02: TREATED WOOD

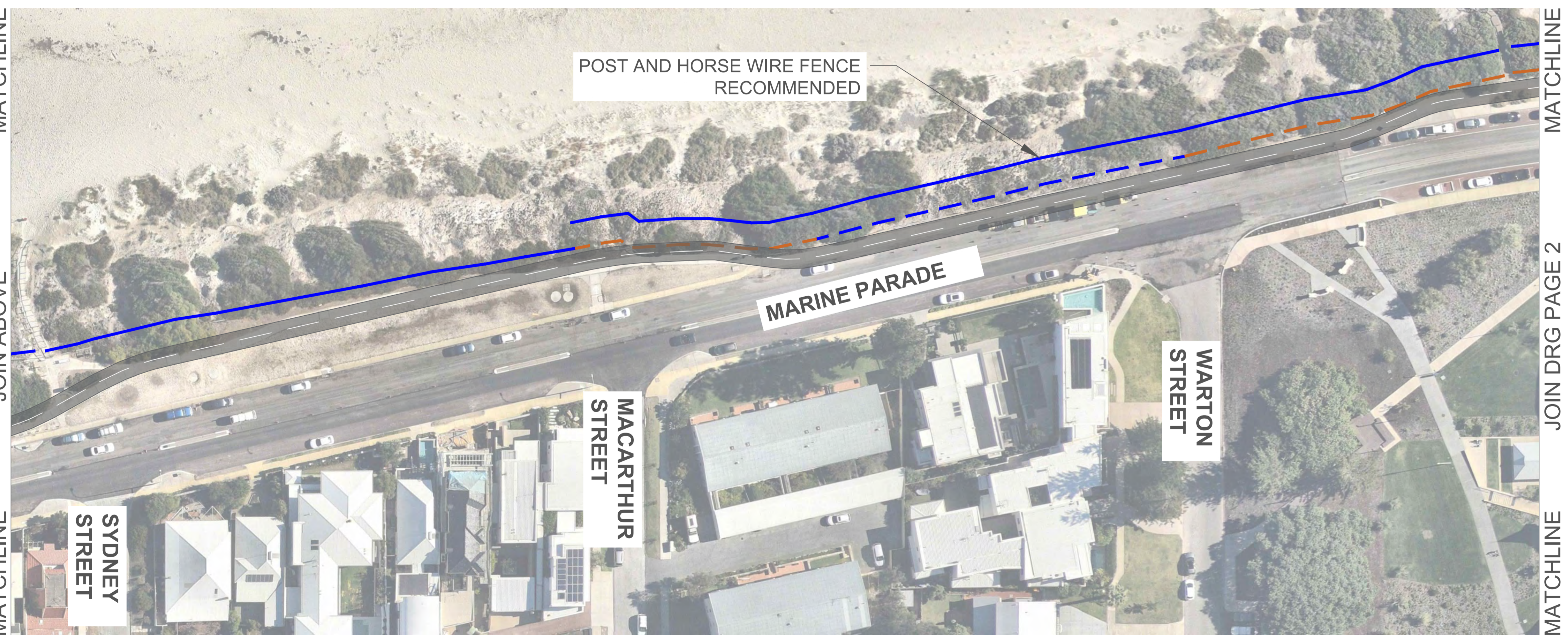


MATCHLINE
JOIN BELOW
MATCHLINE



MATCHLINE
JOIN ABOVE
MATCHLINE

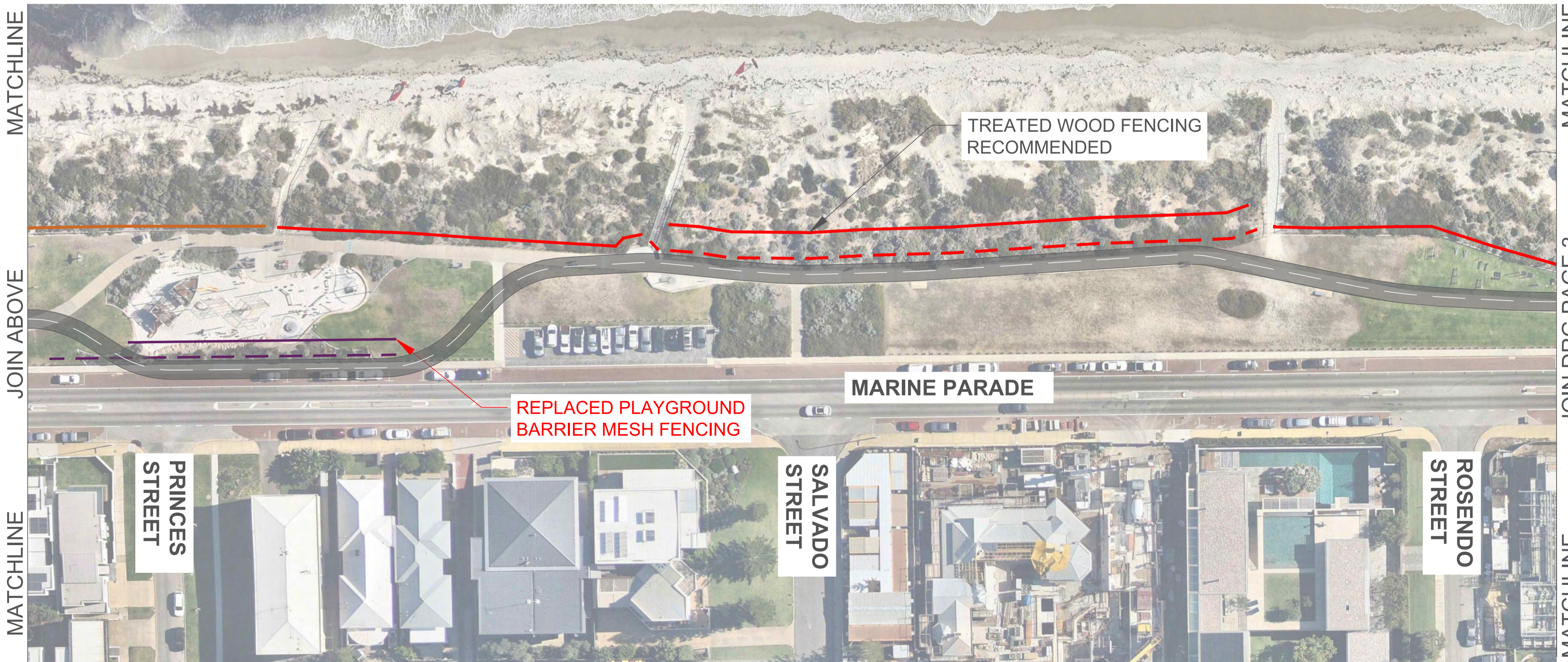
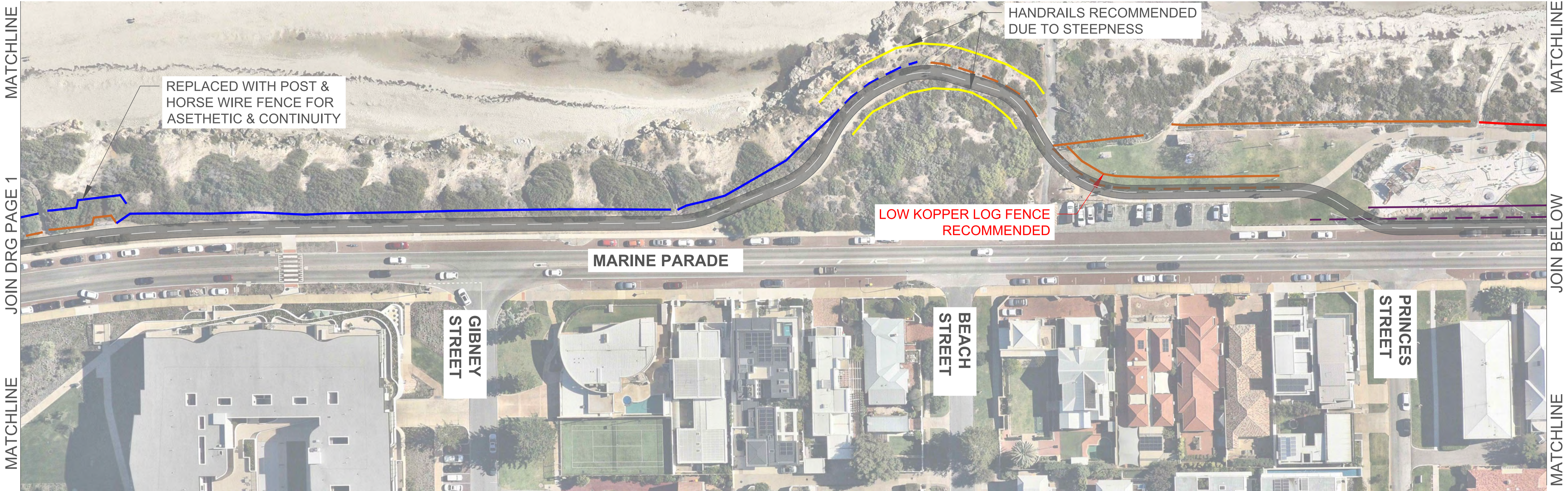
- LEGEND:**
- LOW KOPPER LOG ONLY [FIGURE 01]
 - TREATED WOOD FENCING [FIGURE 02]
 - POST AND HORSE WIRE [FIGURE 03]
 - OTHERS (PLAYGROUND BARRIER)
 - HANDRAIL



MATCHLINE
JOIN DRG PAGE 2
MATCHLINE

NOTE:

- DASHED LINE INDICATES FENCE ALIGNMENT BEING IMPACTED BY SHARED PATH.
- REPLACEMENT FENCE OPTION IS SHOWN TO INDICATE MATERIAL CHANGE ONLY. THE LOCATION SHOWN ON PLAN IS NOT THE ACTUAL POSITION.



LEGEND:

	LOW COPPER LOG ONLY [FIGURE 01]
	TREATED WOOD FENCING [FIGURE 02]
	POST AND HORSE WIRE [FIGURE 03]
	OTHERS (PLAYGROUND BARRIER)
	HANDRAIL

NOTE:

- DASHED LINE INDICATES FENCE ALIGNMENT BEING IMPACTED BY SHARED PATH.
- REPLACEMENT FENCE OPTION IS SHOWN TO INDICATE MATERIAL CHANGE ONLY. THE LOCATION SHOWN ON PLAN IS NOT THE ACTUAL POSITION.



MATCHLINE

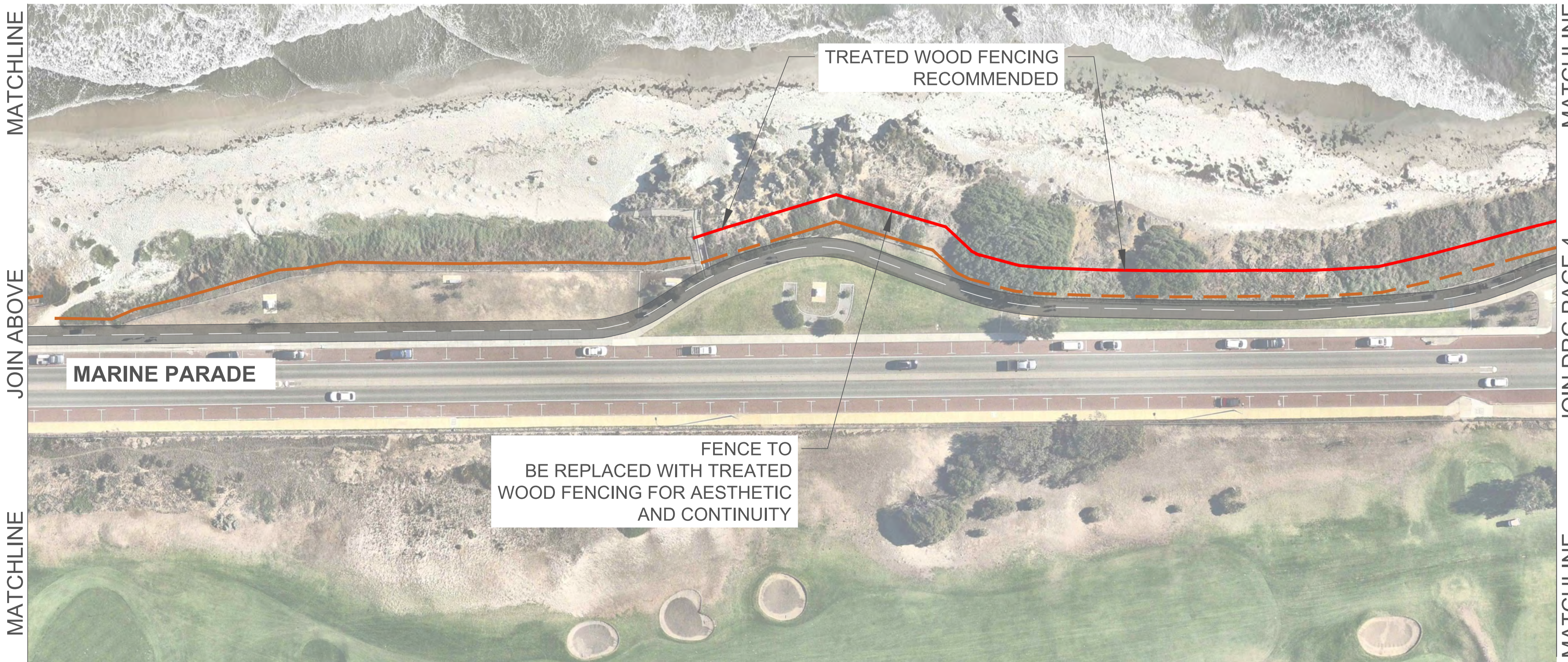
JOIN DRG PAGE 2

MATCHLINE

MATCHLINE

JOIN BELOW

MATCHLINE



MATCHLINE

JOIN ABOVE






MATCHLINE

MATCHLINE

JOIN DRG PAGE 4

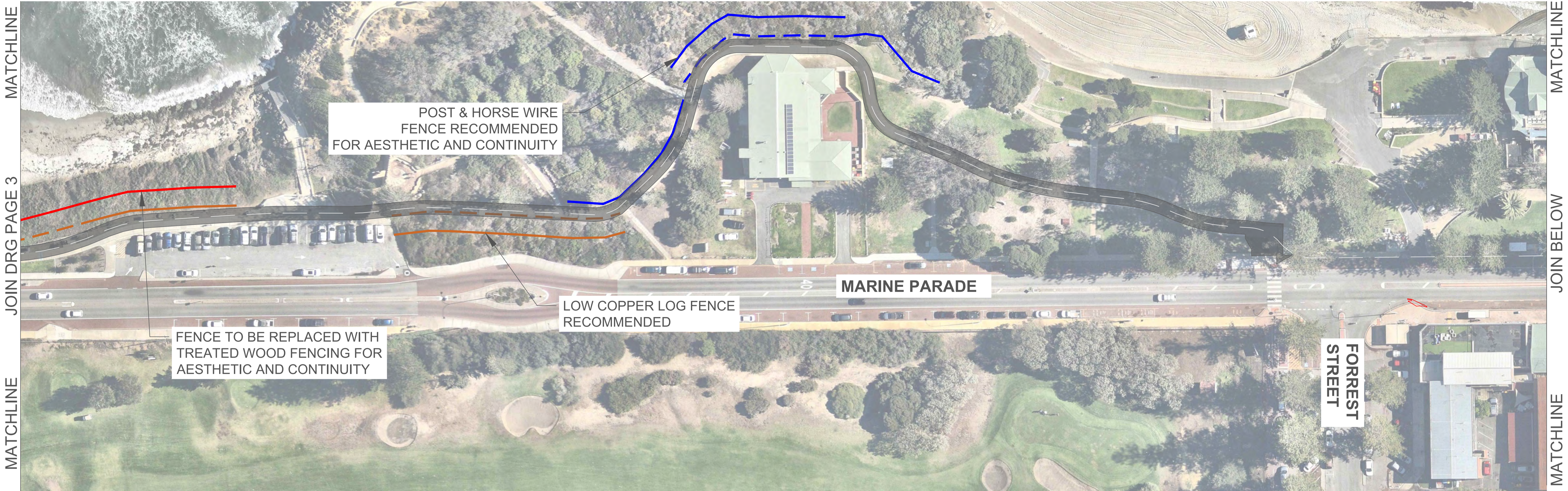
MATCHLINE

LEGEND:

	LOW KOPPER LOG ONLY [FIGURE 01]
	TREATED WOOD FENCING [FIGURE 02]
	POST AND HORSE WIRE [FIGURE 03]
	OTHERS (PLAYGROUND BARRIER)
	HANDRAIL

NOTE:

- DASHED LINE INDICATES FENCE ALIGNMENT BEING IMPACTED BY SHARED PATH.
- REPLACEMENT FENCE OPTION IS SHOWN TO INDICATE MATERIAL CHANGE ONLY. THE LOCATION SHOWN ON PLAN IS NOT THE ACTUAL POSITION.



MATCHLINE

JOIN DRG PAGE 3

MATCHLINE

MATCHLINE

JOIN BELOW

MATCHLINE

POST & HORSE WIRE
FENCE RECOMMENDED
FOR AESTHETIC AND CONTINUITY

FENCE TO BE REPLACED WITH
TREATED WOOD FENCING FOR
AESTHETIC AND CONTINUITY

LOW COPPER LOG FENCE
RECOMMENDED

MARINE PARADE

FOREST
STREET



MATCHLINE

JOIN ABOVE

MATCHLINE

MATCHLINE

JOIN DRG PAGE 5

MATCHLINE

MARINE PARADE

FOREST
STREET

JOHN
STREET

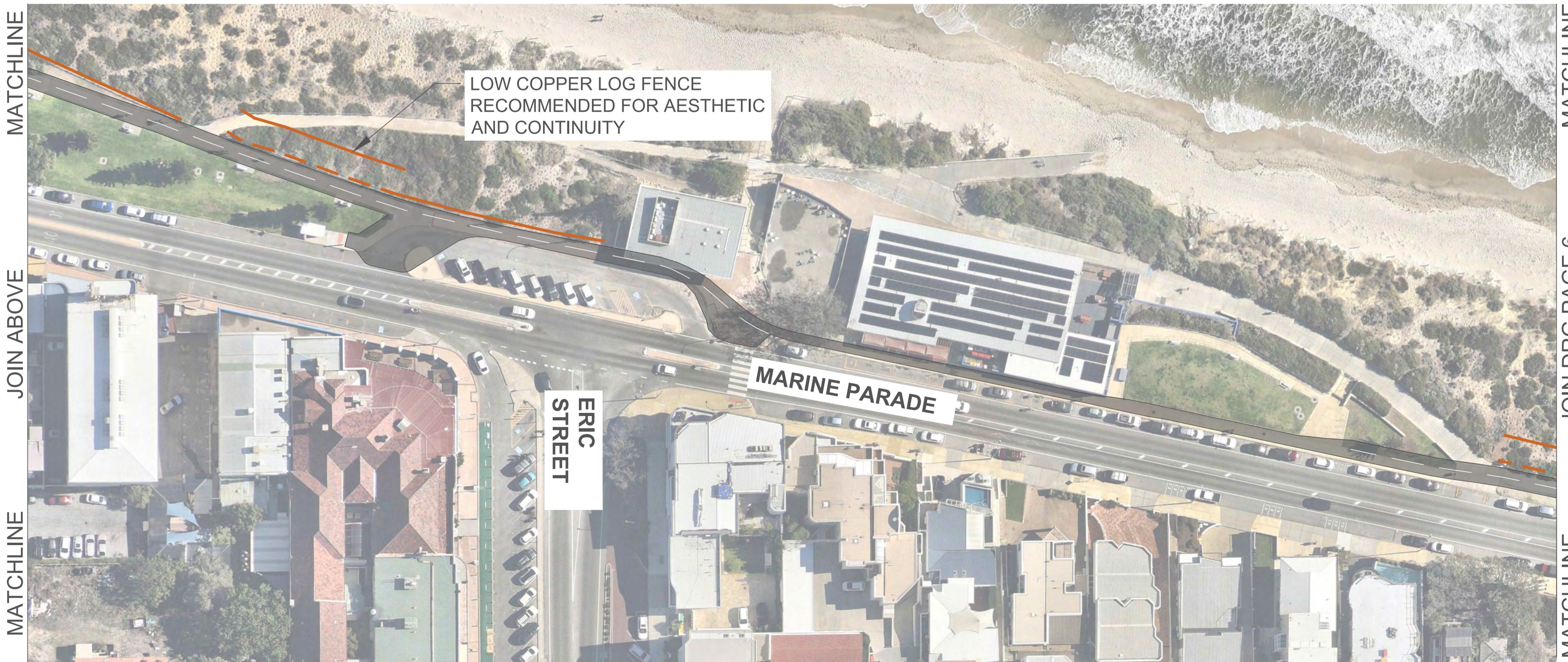
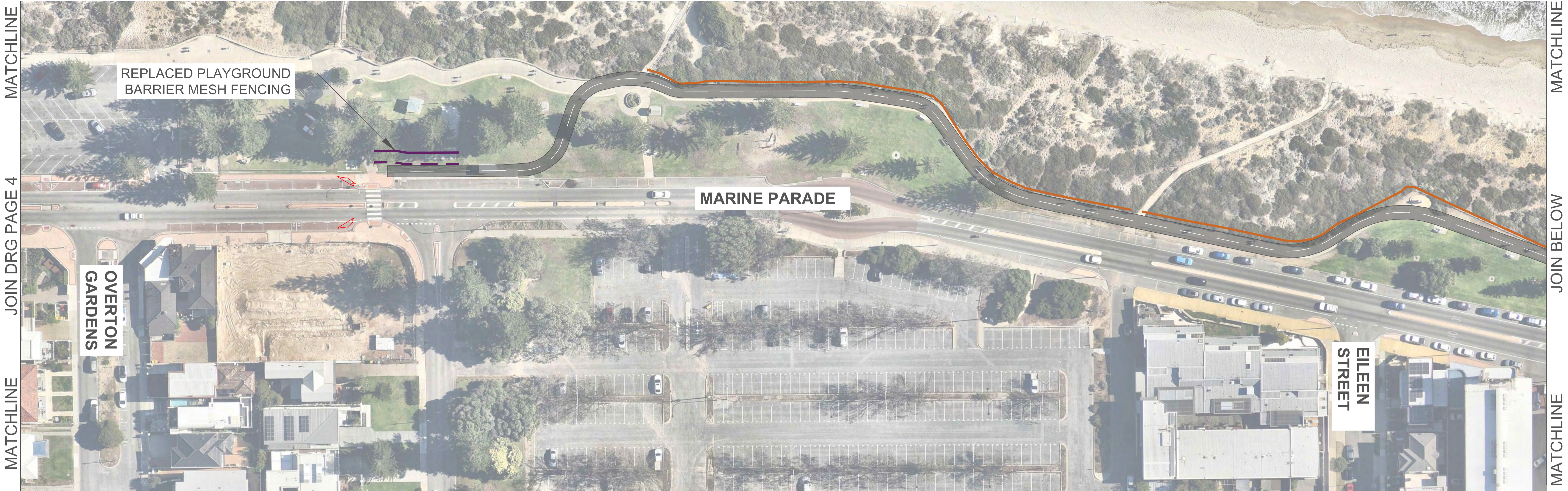
WARNHAM
STREET

LEGEND:






- LOW KOPPER LOG ONLY [FIGURE 01]
- TREATED WOOD FENCING [FIGURE 02]
- POST AND HORSE WIRE [FIGURE 03]
- OTHERS (PLAYGROUND BARRIER)
- HANDRAIL

NOTE:

- DASHED LINE INDICATES FENCE ALIGNMENT BEING IMPACTED BY SHARED PATH.
- REPLACEMENT FENCE OPTION IS SHOWN TO INDICATE MATERIAL CHANGE ONLY. THE LOCATION SHOWN ON PLAN IS NOT THE ACTUAL POSITION.



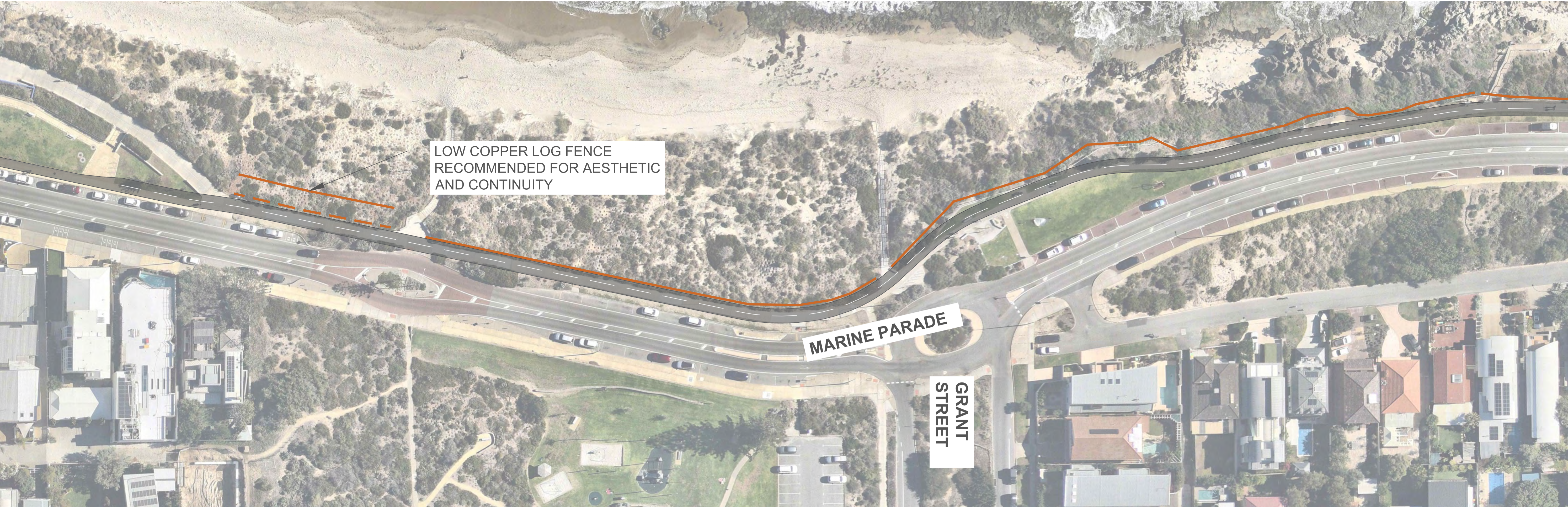
LEGEND:

	LOW KOPPER LOG ONLY [FIGURE 01]
	TREATED WOOD FENCING [FIGURE 02]
	POST AND HORSE WIRE [FIGURE 03]
	OTHERS (PLAYGROUND BARRIER)
	HANDRAIL

NOTE:

- DASHED LINE INDICATES FENCE ALIGNMENT BEING IMPACTED BY SHARED PATH.
- REPLACEMENT FENCE OPTION IS SHOWN TO INDICATE MATERIAL CHANGE ONLY. THE LOCATION SHOWN ON PLAN IS NOT THE ACTUAL POSITION.

MATCHLINE
JOIN DRG PAGE 5
MATCHLINE



MATCHLINE
JOIN BELOW
MATCHLINE

MATCHLINE
JOIN ABOVE
MATCHLINE



LEGEND:

	LOW KOPPER LOG ONLY [FIGURE 01]
	TREATED WOOD FENCING [FIGURE 02]
	POST AND HORSE WIRE [FIGURE 03]
	OTHERS (PLAYGROUND BARRIER)
	HANDRAIL

NOTE:

- DASHED LINE INDICATES FENCE ALIGNMENT BEING IMPACTED BY SHARED PATH.
- REPLACEMENT FENCE OPTION IS SHOWN TO INDICATE MATERIAL CHANGE ONLY. THE LOCATION SHOWN ON PLAN IS NOT THE ACTUAL POSITION.