

CONTRACTOR NOTES:

- DRAWING TO BE READ IN CONJUNCTION WITH CONTRACT DRAWINGS AND SPECIFICATIONS.
- ALL WORKS TO BE COMPLETED IN LINE WITH WESTERN POWER POLICIES, INCLUDING THE UDS, WADCM, DDC, DSM, DCSE, UCM AND EARTHING FAQ. ALL MATERIALS USED MUST BE APPROVED WESTERN POWER MATERIALS.
- VERIFY ALL MATERIAL QUANTITIES AGAINST SITE CONDITIONS PRIOR TO QUOTATION AND ADVISE ELECTRICAL CONSULTANTS OF ANY VARIATIONS.
- SHOW CAUTION IN PROXIMITY TO EXISTING ASSETS. ALWAYS REFER TO CURRENT DBYD DRAWINGS. POTHOLE TO LOCATE IF NECESSARY. PROTECT SERVICES AS REQUIRED. DO NOT ENCROACH MINIMUM APPROACH DISTANCES FOR UNDERGROUND OR OVERHEAD ASSETS.
- LIAISE WITH WESTERN POWER AS REQUIRED. ORGANISE PRE-HANDOVER INSPECTION AND ENERGISATION SCHEDULE WITH ELECTRICAL SUPERINTENDENT/INSPECTOR PRIOR TO COMPLETION OF WORKS.
- CONTRACTOR TO COMPLETE & PROVIDE AS CONSTRUCTED PACKAGE AS PER UDS. ENGAGE 3E CONSULTING ENGINEERS TO DRAFT WP COMPLIANT CAD AS CON. DRAWINGS. INCLUDE 3E'S COSTS FOR DRAFTING AS CON DRAWINGS IN TENDER PRICE. MAINTAIN AND PROVIDE COMPLETE, CLEAR & LEGIBLE RED-LINE AS CONSTRUCTED DRAWING MARK-UPS TO 3E CONSULTING ENGINEERS.
- MAKE ALLOWANCE FOR TERRACING OF CABLES WHERE REQUIRED, INCLUDING FOR ROAD CROSSINGS.
- CLEAN BEDDING SAND TO BE IMPORTED FOR CABLE TRENCHES WHERE EXISTING MATERIALS DO NOT MEET WP REQUIREMENTS.
- PLAN CABLE RUNS TO LIMIT THE NUMBER OF STRAIGHT JOINTS.
- COMMENCE LAYING CABLES FROM THE TRANSFORMER, SWITCHGEAR OR UNIVERSAL PILLAR.
- ALL CABLES LAID NEXT TO RETAINING WALLS TO BE IN CONDUIT. EXTEND CONDUIT 2m PAST WALL ON STRAIGHT SECTIONS.
- INSTALL HEATSHRINK "END CAP" AT ALL CABLE ENDS.
- INSTALL HEATSHRINK GLOVES ON ALL LV CABLE TERMINATION ENDS.
- STREETLIGHT POLES MUST NOT BE INSTALLED IN FOOTPATHS. PEG POLES LOCATIONS PRIOR TO INSTALL AND NOTIFY 3E OF CLASHES IN ADVANCE.
- ERECT LIGHT POLES ONLY AFTER NEARBY EXISTING OVERHEAD POWERLINES ARE REMOVED, WHERE NOTED.
- BORE UNDER EXISTING ROADS.
- CONTRACTOR TO LEAVE SUFFICIENT CABLE COILED AT ALL INTERFACE POINTS (INCLUDING JOINTS, PILLAR TERMINATIONS & POLE TERMINATIONS) TO ALLOW WP TO COMPLETE INTERFACE WORKS. INSTALL END CAPS TO PROTECT CABLE.
- HV FEEDER CABLES TO BE INSTALLED AT DEPTHS SHOWN IN TRENCH CROSS SECTIONS, TO ALLOW FOR CLEARANCES TO OTHER AND FUTURE CABLES.

WESTERN POWER SCOPE OF WORKS

- WP TO COST AND CARRY OUT REMOVAL OF EXISTING 6.5m POLE WITH 125W MV LUMINAIRE AND STRAIGHT JOINT EXISTING 16SL CABLES. WP TO SUPPLY TERMINATION AND CARRY OUT ASSOCIATED WORKS
- WP TO COST TO REMOVE EXISTING 6.5m LIGHT POLE AND INSTALL NEW 10.5m STANDARD POLE POWDER COATED HAWTHORN GREEN WITH 80W LED 4E LUMINAIRE. WP TO SUPPLY MATERIALS AND CARRY OUT ALL ASSOCIATED WORKS.
- WP TO COST TO REMOVE EXISTING 6.5m LIGHT POLE AND INSTALL NEW 12.5m STANDARD POLE POWDERCOATED HAWTHORN GREEN WITH 170W LED 6E LUMINAIRE. WP TO SUPPLY MATERIALS AND CARRY OUT ALL ASSOCIATED WORKS.
- WP TO COST TO CUT IN AND OUT OF EXISTING 16SL CABLE AND STRAIGHT JOINT TO NEW 16SL CABLES. WP TO SUPPLY JOINTS AND CARRY OUT ASSOCIATED WORKS.

ARROW DENOTES DIRECTION TO PEG WITH WHICH DUCTS ARE TO BE ALIGNED

DUCTS TO BE LAID TO WP SPECIFICATION AS OUTLINED IN UNDERGROUND DISTRIBUTION SCHEMES MANUAL - POLICY AND INSTALLATION OPTIONS

DENOTES PREVIOUSLY REQUESTED DUCTS

LEGEND

SCHEME BODY:

- RETAINING WALL
- RETAINING WALL EXTRA FOOTING
- RESTRICTED ZONE
- EASEMENT

HV CABLES

- CN53 - 400mm2 (3x1c)
- CN49 - 240mm2 (3x1c)
- CN48 - 185mm2 (3x1c)
- CN50 - 95mm2 (3x1c)
- CN51 - 50mm2 (3x1c)
- CN51 - 50mm2 (1c)
- CN46 - 35mm2 (3x1c)
- CN47 - 35mm2 (1c)
- EXISTING HV CABLES (SIZE AND TYPE INDICATED)

LV-SL CABLES

- CN45 - 240mm2 (1x3c)
- CN44 - 185mm2 (1x3c)
- CN43 - 120mm2 (1x3c)
- CN42 - 25mm2 (1x3c)
- CN41 - 16mm2 SL (1c)
- 40 C PILOT
- EXISTING LV CABLES (SIZE AND TYPE INDICATED)

STREET LIGHTS

EXISTING

- 42W CFL
- 80W MV
- 125W MV
- 70W HPS
- 150W HPS
- 250W HPS
- 70W MH
- 150W MH
- 250W MH
- 20W LED 1E
- 53W LED 2E
- 36W LED 3E
- 80W LED 4E
- 160W LED 5E
- 170W LED 6E

LEGEND DEFINES TYPE & WATTAGE - NOT COLOUR

PILLARS / PITS / ETC

- MINI (WORKING END)
- UNIVERSAL
- MINI
- LINK
- STANDARD WP MARKER POST
- CUSTOM FOOTPATH CABLE MARKER PLATE
- CONDUIT / POLY PIPE
- UMS PIT
- CONCRETE HV CABLE PIT
- PX - TYPE
- B/D - TRAFFICABLE
- LID RATING
- 100/200AMP CUTOUT
- SERVICED UNCLEARED DE-ENERGISED LOT

TRANSFORMER **EXISTING** **SWITCHGEAR**

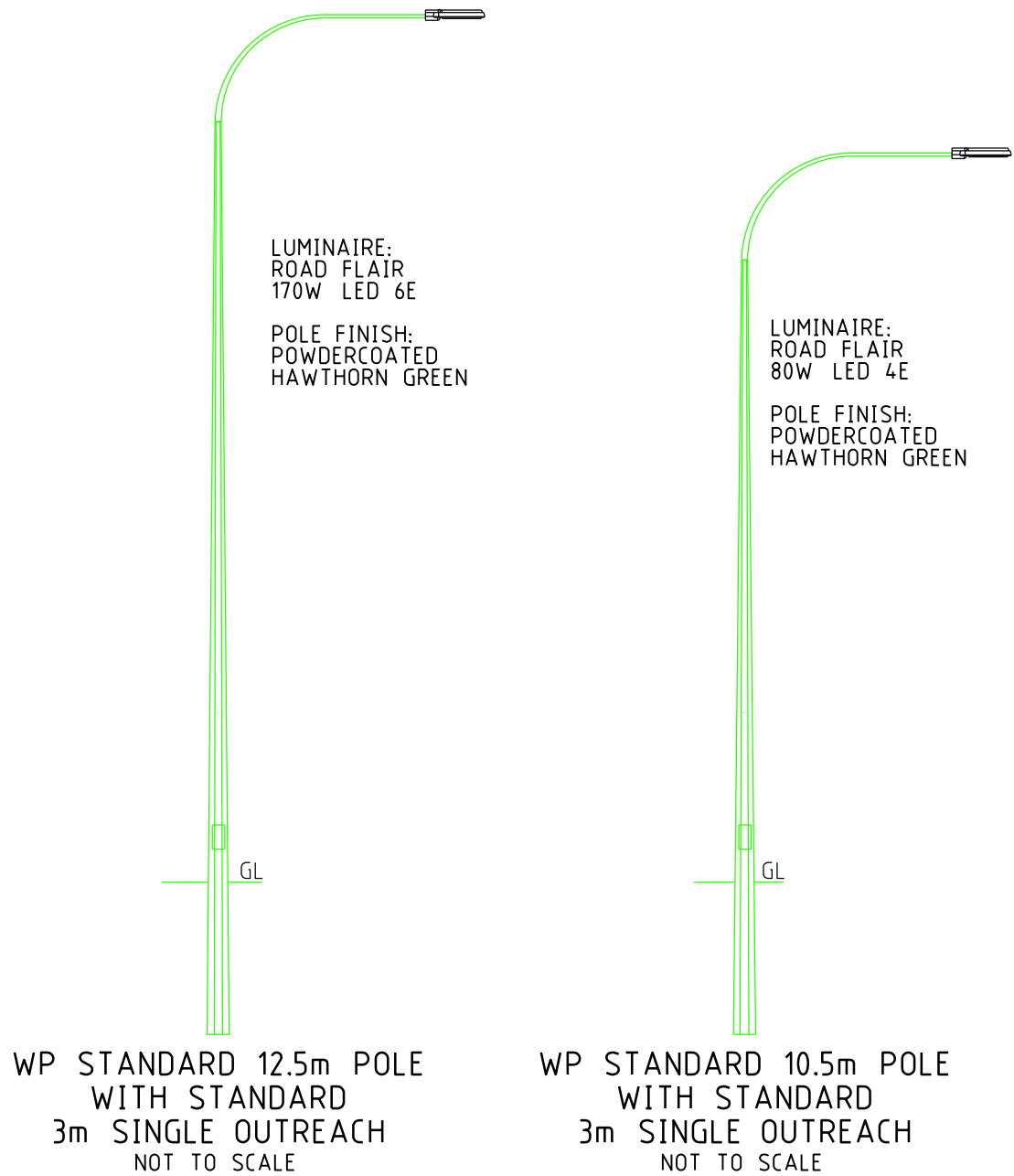
AERIAL CONDUCTORS AND POLES

- NEW POLE (ANY TYPE AS INDICATED)
- EXISTING POLE (ANY TYPE AS INDICATED)
- EXISTING AERIAL CONDUCTORS (SIZE AND TYPE INDICATED)



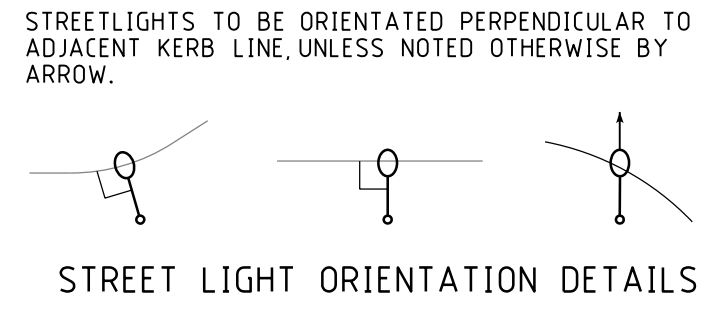
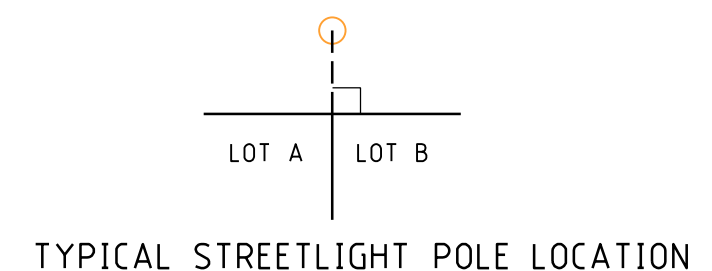
NOTE
CLIENT TO ORGANISE POT-HOLING OF AREA TO DETERMINE EXTENT OF CONDUIT UNDER PROPOSED ROAD.

CAUTION
TRANSMISSION LINES
IN THIS AREA



WP STREETLIGHTS TO BE LOCATED ON 2.7m ALIGNMENT, UNLESS NOTED OTHERWISE. LOCATIONS TYPICALLY TO BE IN LINE WITH SIDE BOUNDARY PEG. REFER TO SPECIFIC DETAILS FOR NON-STANDARD LOCATIONS.

STREETLIGHTS SHALL BE LOCATED EXACTLY AS PER THE DRAWINGS AND CANNOT BE MODIFIED WITHOUT PRIOR APPROVAL FROM THE SUPERINTENDENT.



NOTE: ALL UNMETERED SUPPLIES (Including CUSTOMER AND WESTERN POWER STREETLIGHTING ASSETS)					
TYPE OF EQUIPMENT	NO of UNITS	UNIT WATTAGE	TOTAL WATTAGE	DAILY HRS OPERATION	WP Asset Yes / No
6.5m WP STANDARD POLE + 125W MV LUMINAIRE REMOVED	-4	125W	-500W	DUSK/DAWN	YES
10.5m WP STANDARD POLE + ROAD FLAIR 80W LED 4E LUMINAIRE	3	80W	240W	DUSK/DAWN	YES
12.5m WP STANDARD POLE + ROAD FLAIR 170W LED 6E LUMINAIRE	2	170W	340W	DUSK/DAWN	YES
NOTE: ALL UNMETERED SUPPLIES and STREETLIGHTS MUST BE INCLUDED IN DESIGN DRAWING					

REV	DESCRIPTION	DATE	DRWN	CHKD
1	ISSUED TO CLIENT FOR COMMENT	30.07.2020	DA	JH

3E CONSULTING ENGINEERS PTY LTD

Electrical Engineering Excellence

Suite 1, Level 2, Condar Tower
22 St George's Tce, Perth WA 6000
PO Box 3184, East Perth WA 6892
Tel: 08 6314 9000 Email: admin@3ecec.com.au

This document is the property of 3E Consulting Engineers Pty Ltd and may only be used in accordance with the terms of engagement for which it was commissioned. Unauthorised use of this document is prohibited. Any modification to this drawing will be subject to further technical input.

**PRELIMINARY
NOT FOR CONSTRUCTION**

NOTICE OF WORKS

IF WORKING IN THE VICINITY OF EXISTING OVERHEAD DISTRIBUTION OR TRANSMISSION LINES:
REFER TO "WORKSAFE" REGULATION 344

THE LOCATION OF EXISTING SERVICES IS APPROXIMATE ONLY. NO GUARANTEE IS GIVEN THAT ALL EXISTING SERVICES ARE SHOWN. ALWAYS REFER TO CURRENT DATA DRAWINGS, CONFORM ASSET LOCATIONS ON SITE BEFORE COMMENCEMENT OF WORK.
REFER TO "WORKSAFE" REGULATION 321

North Arrow

LAT 31° 59' 18" S
LONG 115° 45' 52" E

Scale: 1:500 @ A1 Original Paper Size

Base File Date: 17-07-2020 H. Datum: PCG94

Designed: DA Drawn: DA Checked: JH Appr: JH

Western Power Reference No. TBA WAPC No. N/A

Local Authority: TOWN OF COTTESLOE

Civil Consultant: PORTER CONSULTING ENGINEERS

**RAILWAY STREET
(ERIC TO GREENHAM ST)
COTTESLOE
ROADWAY LIGHTING
ELECTRICAL NETWORK**

Sheet: 01 of 1
3E Drawing Number: 3E20107-01
Revision: 1