

Signed for and on behalf of the
Western Australian Planning Commission

An officer duly authorised by the Commission
pursuant to section 24 of the
Planning and Development Act 2005
for that purpose in the presence of:

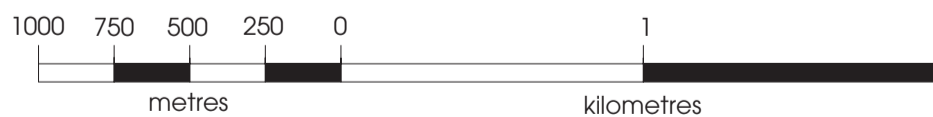
Witness _____

Date _____

Approved _____
Governor

Date _____

- Excluded from primary regional roads reservation and included in urban zone.
- Excluded from primary regional roads reservation and included in parks and recreation reservation.
- Excluded from primary regional roads reservation and included in industrial zone.
- U Excluded from primary regional roads reservation and included in public purposes (U) reservation.
- Excluded from primary regional roads reservation and included in railways reservation.
- Excluded from urban and industrial zones and from railways and parks and recreation reservations and included in primary regional roads reservation.



**Metropolitan Region Scheme
Amendment No. 1210/41
As Modified**

Project manager: J. O'Hurley
 Draftsperson: S. Jenkins
 Examined: _____
 Revised: _____
 Date: WAPC/2040 25 August 2015



SCALE 1:25000

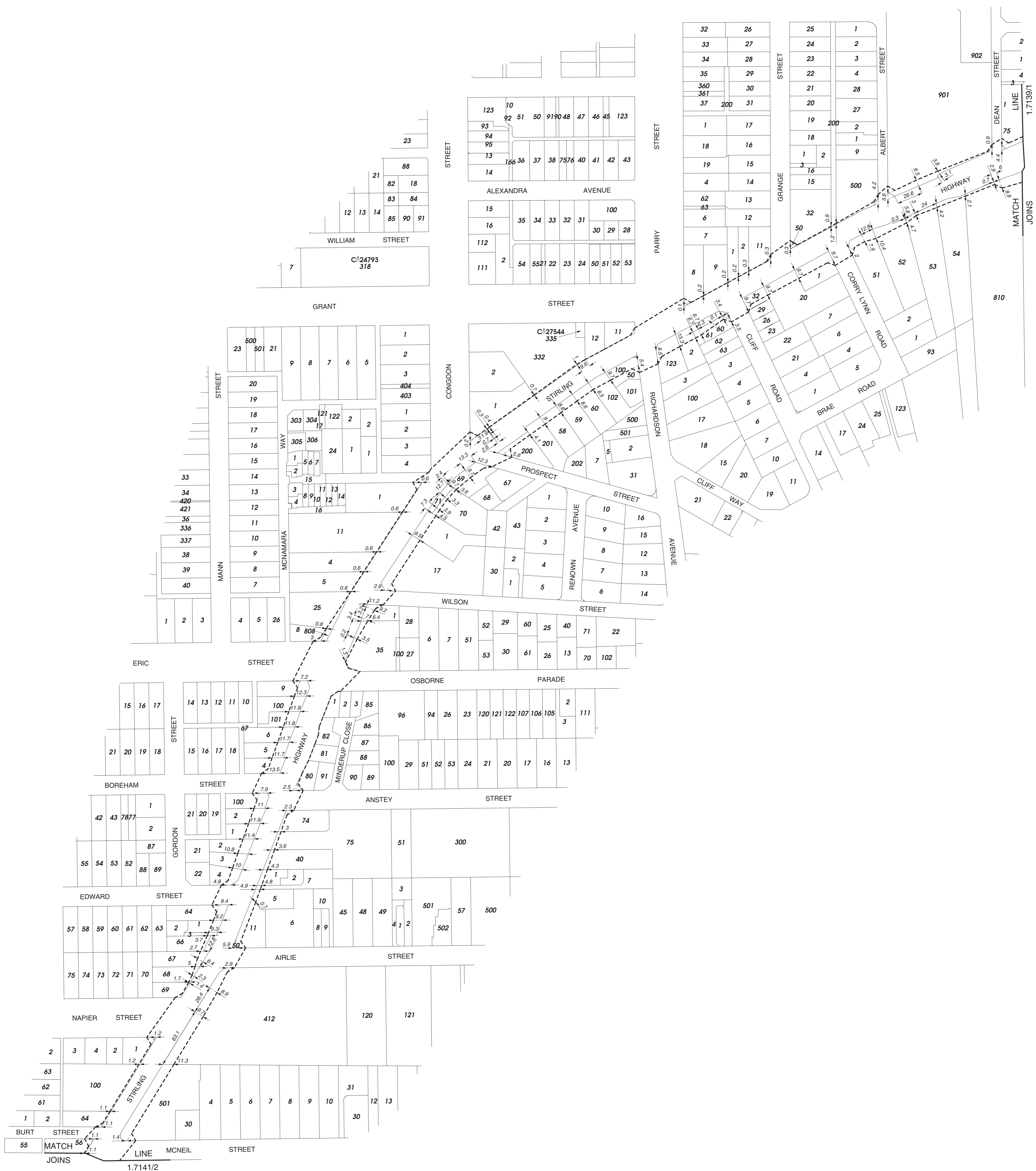
Plan number
2.0801/2

2623

File number: 809/2/1/91
 Plan reference: MRS 1:25000 sheets 15 & 19
 Perth 1:2000 sheets 07.15-20, 08.20-21, 09.21-22, 10.21-22
 land requirement plans 1.3340/4, 1.7137/1, 1.7138/1, 1.7139/1,
1.7140/1, 1.7141/2, 1.7142/2 & 1.7143/1
 changes plans 1.7144/1, 1.7145/1, 1.7146/1, 1.7147/1, 1.7148/1
1.7149/1, 1.7150/1 & 1.7151/1

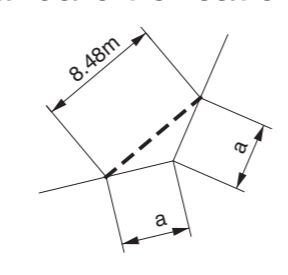
Map numbers 15/76m & 19/93m





Western Australian Planning Commission
 This is to certify that Plan number 1.7140/1
 was APPROVED by RESOLUTION of a meeting
 held on 25 / 08 / 2015 Minute No. WAPC 235.10.2
 Signed: *S. Pells*
 Authorised Officer
 Effective:

Standard truncation



Note: all truncations are standard unless otherwise shown

Legend

proposed reservation boundary - - - - -



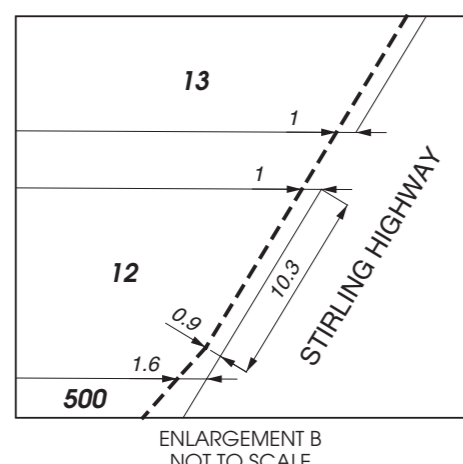
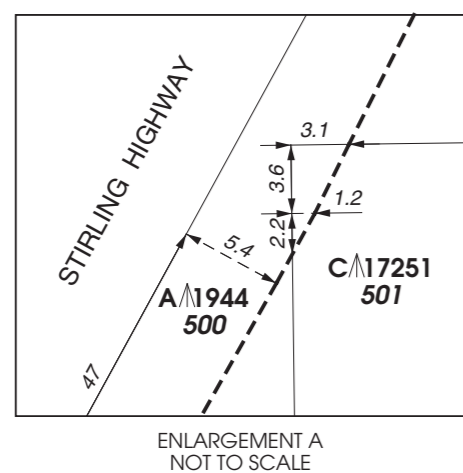
Stirling Highway - Lot 58 to McNeil Street
 Primary Regional Roads - proposed land requirement

Project manager: J. O'Hurley
 Draftsperson: T. Lynch
 Examined:
 Revised:
 Date:

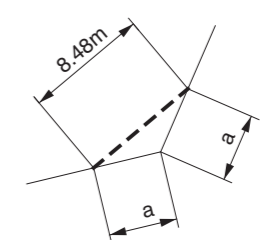
Plan number
1.7140/1
 Scale 1:2000

File number: 809/2/91
 Plan reference: Perth 1:2000 sheets 08.20 & 08.21
 Mapping/Plan: Regional Scheme 1:25000 sheet 19
 amending plan: 2.0001/2
 changes plan: 1.7147/1
Supersedes plan 1.7140





Standard truncation



Note: all truncations are standard unless otherwise shown

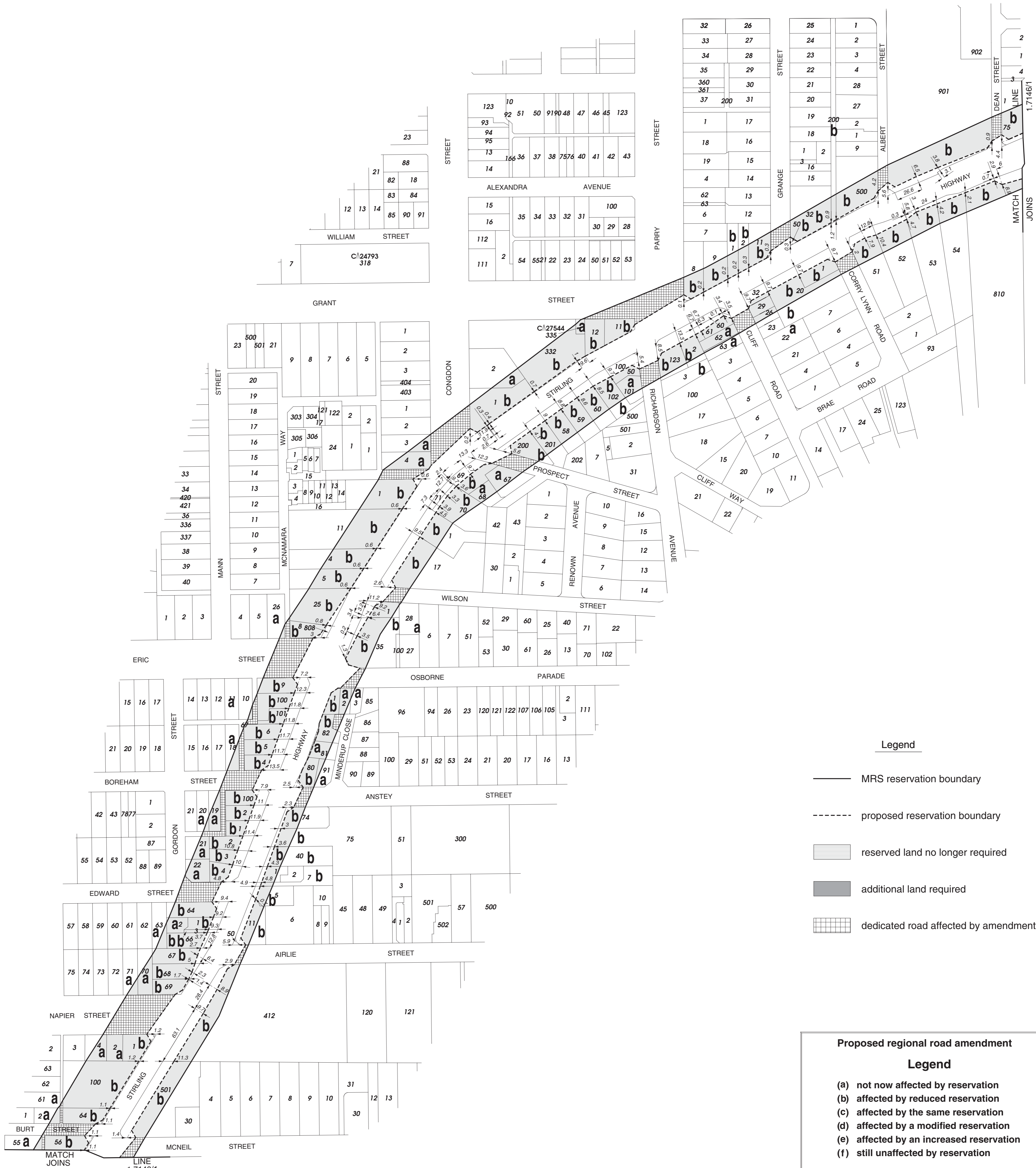
Western Australian Planning Commission
This is to certify that Plan number 1.7141/2 was APPROVED by RESOLUTION at a meeting held on 25 / 08 / 2015 Minute No. WAPC 235.10.2 Signed [Signature] Authorised Officer Effective:

Legend

proposed reservation boundary - - - - -



Supersedes plan 1.7141/1



Legend

- MRS reservation boundary
- - - - - proposed reservation boundary
- reserved land no longer required
- additional land required
- dedicated road affected by amendment

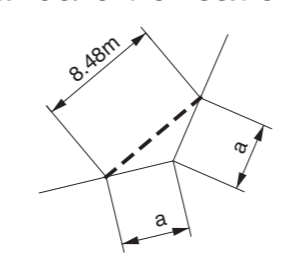
Proposed regional road amendment

Legend

- (a) not now affected by reservation
- (b) affected by reduced reservation
- (c) affected by the same reservation
- (d) affected by a modified reservation
- (e) affected by an increased reservation
- (f) still unaffected by reservation

Western Australian Planning Commission
 This is to certify that Plan number 1.7147/1
 was APPROVED by RESOLUTION of a meeting
 held on 25 / 08 / 2015 Minute No. WAPC 235.10.2
 Signed *[Signature]*
 Authorised Officer

Standard truncation



Note: all truncations are standard unless otherwise shown

proposed reservation boundary



Stirling Highway - Lot 58 to McNeil Street
 Primary Regional Roads - proposed changes

Project manager: J. O'Hurley
 Draftsperson: S. Jenkins
 Examined:
 Revised:
 Date:



Plan number
1.7147/1

File number: 809/21/91
 Plan reference: Perth 1:2000 sheets 08.20 & 08.21
 Metropolitan Region Scheme 1:25000 sheet 19
 amendment plan: 2.0001/2
 land requirement plan: 1.7140/1
**Supersedes plan
 1.7147**



Proposed regional road amendment

Legend

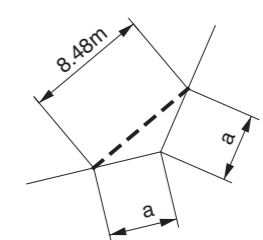
- (a) not now affected by reservation
- (b) affected by reduced reservation
- (c) affected by the same reservation
- (d) affected by a modified reservation
- (e) affected by an increased reservation
- (f) still unaffected by reservation

Legend

- MRS reservation boundary
- proposed reservation boundary
- reserved land no longer required
- additional land required
- dedicated road affected by amendment



Standard truncation



Note: all truncations are standard unless otherwise shown

Western Australian Planning Commission
 This is to certify that Plan number 1.7148/1
 was APPROVED by RESOLUTION of a meeting
 held on 25 / 08 / 2015 Minute No. WAPC 235.10.2
 Signed *S. Kelly*
 Authorised Officer

