

Cottesloe Foreshore Renewal Summary Strategy - Resident Feedback
Summary of Submissions Received - Closing date, 23 October 2017

#	Name	Summary of Comments	Staff Comment
1	Andrea Murray	Supports the revitalising of the Cottesloe Foreshore Precinct with improved amenities, pedestrian accessibility and the effective planning of public open spaces. The possible materials are great for the weather conditions experienced in a beach environment. Great ideas for access for all, important for everyone to enjoy the beach lifestyle. Suggests that more people will stay at the beach longer if there is more sun shade areas. Signage is important to communicate to the public where they are on the beach. The strategy takes into account the environment and public use.	
2	Andrew Lilley	Supports the revitalising of the Cottesloe Foreshore Precinct with improved amenities, pedestrian accessibility and the effective planning of public open spaces.	
3	Ashley Starr	Supports the revitalising of the Cottesloe Foreshore Precinct with improved amenities, pedestrian accessibility and the effective planning of public open spaces. Agrees the main car park should be replaced or halved with a multi-purpose public area. Suggested the road in front of the Cottesloe pub be made into a pedestrian friendly area, and the walkway be split into a pedestrian only path to separate pedestrians from cyclists as it is quite dangerous. In addition to sun shade, shade/protection from the seabreeze is required. Supports the summer trials and the food trucks. The playground should be upgraded to an adventure playground.	
4	Carol Holmes	Supports the revitalising of the Cottesloe Foreshore Precinct with improved amenities, pedestrian accessibility and the effective planning of public open spaces. Suggests the central section of Marine Parade be made into a mall. Only cyclists and pedestrians between Forrest Street and Grant Street. Suggested holding markets and art exhibitions.	
5	Caroline Owen	Supports the revitalising of the Cottesloe Foreshore Precinct with improved amenities, pedestrian accessibility and the effective planning of public open spaces.	
6	Chilla Bulbeck	Goal of the strategy should be to remove all vehicle traffic along the section of Marine Parade proposed in the strategy. This should be converted into a shaded pedestrian and cyclist route. Suggested the route for service vehicles (bus etc.) be made one way along a single lane. Does not support 'educational' signs, and 'historical' signs should be discreet. Does not support the timber beach viewing area, need to maximise natural areas. Supports increased shelter/shade.	
7	David Groom	Supports the revitalising of the Cottesloe Foreshore Precinct with improved amenities, pedestrian accessibility and the effective planning of public open spaces. Suggests this happen sooner rather than later.	
8	Glenys Artelaris	Supports the revitalising of the Cottesloe Foreshore Precinct with improved amenities, pedestrian accessibility and the effective planning of public open spaces. Supports the removal of the Marine Parade car park. Does not support the inclusion of an all abilities ramp, investigate other options for disabled access to the beach. Cottesloe ratepayers and residents to be exempt from paid parking at a multistory car park at the corner of Marine Parade and Napier Street.	
9	Graham Lee	Supports the revitalising of the Cottesloe Foreshore Precinct with improved amenities, pedestrian accessibility and the effective planning of public open spaces.	
10	Greg Barrett	Supports the revitalising of the Cottesloe Foreshore Precinct with improved amenities, pedestrian accessibility and the effective planning of public open spaces. Relocate the car park in front of the tennis courts and encourage new development along Marine Parade. Suggests better shade will encourage people to use nearby food vendors. The strategy is long overdue.	
11	Helene Dobson	Does not support changes to Marine Parade car park one due to the increased population. It is good to have accessible parking close to the beach. People, particularly the elderly and surfers, like to sit in the car park and look at the view. Suggests the car park remains, but in summer it can be used for food truck nights etc. Does not support the idea of markets because Cottesloe will start to look like a mini royal show. Keeping Marine Parade open will allow space for traffic and emergency services.	
12	Hilary Rumley	Supports increased universal access to beach, ramp access to the beach/ocean, improved disabled access to public toilets and gradients compliant with standards. Suggests there should be adequate provision of ACROD parking bays close to the foreshore, retention of the ACROD parking bays near the groyne and provision of beach wheelchairs at specified locations.	
13	Jane Hope	Supports the revitalising of the Cottesloe Foreshore Precinct with improved amenities, pedestrian accessibility and the effective planning of public open spaces.	
14	Jocelyn Angove	Supports the proposed plan. Suggests there be parking charges.	

15	John Brooksby	Supports the latest Cardno report that provides greater separation from the proposed car park for nearby residents. Entry to the car park from Bryan Way is dangerous for pedestrians. Supports the plan to reduce the number of car bays and increase grass area. Suggests the skatepark and a toilet block will attract anti-social behaviour. Supports the extension of the footpath from Broome Street to Marine Parade. Does not support a multistory car park because it is at odds with the Cottesloe view and will increase traffic congestion. It is ugly, oversized and will be unused for most of the year. Suggests extending the dune area westwards towards the ocean for more recreational space.
16	John Walsh	Keep the signage to a minimum. No need to replace or add new signage. Suggests talking to businesses along Marine Parade regarding the closure of car park one. Markets are better suited to the Civic Centre. Supports increased shade areas. More bins for people to leave their rubbish. Keep bench seating.
17	Joshua Hughes	Supports the revitalising of the Cottesloe Foreshore Precinct with improved amenities, pedestrian accessibility and the effective planning of public open spaces.
18	Julia Hayes	Supports the revitalising of the Cottesloe Foreshore Precinct with improved amenities, pedestrian accessibility and the effective planning of public open spaces. Supports increased parking facilities for younger residents and the skatepark. Supports a ramp to allow disabled people access to the ocean. Supports increased shade/shelter. Supports historical signage. Suggests improved lighting.
19	Justin McPherson	Supports the revitalising of the Cottesloe Foreshore Precinct with improved amenities, pedestrian accessibility and the effective planning of public open spaces. Supports the changes to the Marine Parade car park one. Supports the redevelopment of the Napier Street car park.
20	Katrina Downes	Supports the revitalising of the Cottesloe Foreshore Precinct with improved amenities, pedestrian accessibility and the effective planning of public open spaces. Concerned about the wooden decking, too hot to sit on. Signage needs consistency. Concerned with the proposed playground slides because they make the heritage terraces look cheap. Sea container should run east-west to not take up valuable ocean front area. Supports changes to car park two to help with overflow.
21	Kirsty Barrett	Supports the revitalising of the Cottesloe Foreshore Precinct with improved amenities, pedestrian accessibility and the effective planning of public open spaces. The current terraces are dangerous and too high, need to be upgraded/made smaller. The family plaques must be relocated or returned to the family. Suggests removing Marine Parade car park one to be utilised as public space.
22	Lara Bucher	Supports the revitalising of the Cottesloe Foreshore Precinct with improved amenities, pedestrian accessibility and the effective planning of public open spaces. Should consider shading at all times during the day. Suggests more pedestrian access and to relocate car park one to make the end of Marine Parade pedestrian/cyclists only.
23	Mark Goodlet	Supports the revitalising of the Cottesloe Foreshore Precinct with improved amenities, pedestrian accessibility and the effective planning of public open spaces. Suggests stainless steel 316 for appearance and durability over galvanised steel.
24	Mark Powell	Supports the revitalising of the Cottesloe Foreshore Precinct with improved amenities, pedestrian accessibility and the effective planning of public open spaces. If the wooden fitness equipment is not relocated it should be offered to North Cottesloe Primary School. Suggested using real limestone blocks as this would link greatly to the history of the Cottesloe limestone quarry. Consistent lighting all along Cottesloe. Suggests having the shade/shelter all year round with the possible addition of windbreak panels in winter. Supports the rustic and coastal feel of the signage. Supports the shady seating, this should also be explored amongst the pine trees. Supports the summer trials. Suggested turning a part of car park one into a skatepark or mini golf course. The limestone terraces are dangerous and should be removed. If the terraces are to be replaced they will need stairs to make them safe.
25	Martin Black	Supports the revitalising of the Cottesloe Foreshore Precinct with improved amenities, pedestrian accessibility and the effective planning of public open spaces. There is a need for more consistency to keep the simple, laidback feel of Cottesloe going. Suggests there should be the opportunity to trial all sorts of activities, for example, markets, pop-up dining and music entertainment.
26	Matthew Rich	The renewal plan is long overdue. Suggests converting Marine Parade (between Forrest Street and Napier Street) to resident traffic only (excluding emergency services and public transport). This section should be paved to promote pedestrian use and allow businesses to use alfresco dining. Limit parking to 2 hours max along Marine Parade to south of John Street and north of Napier Street (residents exempted). Limit parking in adjacent residential streets to residents only. Complete removal of car park one. Complete removal of car park opposite Ocean Beach Hotel. Upgrade Napier Street car park. Upgrade and extend car park at Cottesloe train station. Upgrade car parking behind Ocean Beach Hotel. Introduce parking fees for non-residents in public parking areas. Provide parking permits to all residents and their visitors.

27	Meaghan White	Supports the revitalising of the Cottesloe Foreshore Precinct with improved amenities, pedestrian accessibility and the effective planning of public open spaces. Less signage would be beneficial. Suggests the seating could be more fun by using large timber blocks. Supports the summer trials.
28	Melissa Harkins	Supports the revitalising of the Cottesloe Foreshore Precinct with improved amenities, pedestrian accessibility and the effective planning of public open spaces. Concerned about the hand prints along the beach front and if these will be moved/relocated.
29	Mike Dobson	Proposed signs should incorporate existing signs and information to reduce the number of signs. Information on Indigenous significance and ocean protection zones are welcome. Does not support the removal of car park one. Traffic and parking flow will suffer. Suggests using grassed areas for trials/placemaking. The renewal strategy does not address surfers. Retain car park and include drop off/pick up bays, provide lookout seating for surfers, emphasis on drinking fountains/beach showers and increase car park security. Consider "off peak" use in winter.
30	Miles Ashton	Supports the revitalising of the Cottesloe Foreshore Precinct with improved amenities, pedestrian accessibility and the effective planning of public open spaces. Excited about summer trials. Suggests a modern, uniform and consistent approach to infrastructure reduction. Likes the Freo stone, the washed aggregate concrete and decking. Supports lots of lighting as it gets dark at night for people walking. Supports shade/shelter. Consistent approach to signage, do not go overboard. Supports decking bridges under the trees. Interested in the ocean pool concept opposite Eric Street.
31	Nicholas Bath	Supports the revitalising of the Cottesloe Foreshore Precinct with improved amenities, pedestrian accessibility and the effective planning of public open spaces.
31	Patricia Carmichael	Cottesloe is a beach not a theme park. The design should be more aligned to a beach lifestyle with improvements to the existing beachfront. Suggests improved showers, beach shade and run/walk dedicated paths separate from cyclists/skate boarders. Questions where the funding is coming from and why there is no cost estimate. Costings to be provided to staff and councillors. Excessive use of timber. Does not support materials proposed for shade/shelter. Signage to be kept to a minimum. More raised seating and tree planting. Summer trials at Civic Centre or Station Street. Does not support tunnel slides, petition screening, colouring shade area, sea container, planter boxes, mural to road surface, pop-up seating or lounge seating. What next - supports points 1, 2 and 3. Costings to be included when council votes on 4a, 4b and 4c. Too many bins creating an eyesore and need to rethink bin locations.
32	Paul House House	Supports the revitalising of the Cottesloe Foreshore Precinct with improved amenities, pedestrian accessibility and the effective planning of public open spaces. Item 39 is a missed opportunity to enhance. Item 42 could be lengthened and deepend into part of the car park for better design/access. Spend more capital investment to ensure minimal annual maintenance cost on shade/shelter. Supports a wave pool.
33	Peter Harris	Supports the revitalising of the Cottesloe Foreshore Precinct with improved amenities, pedestrian accessibility and the effective planning of public open spaces.
34	Peter Lalor	The plan should be implemented taking into consideration the balance of the Town area. Council needs a long term policy for parking. Consider the needs and views of nearby residents. Questions how the hotels fit in to the plan, particularly parking. Need to clarify Marine Parade and assumes Marine Parade will be identified by survey. The plan does not consider existing water, main, sewerage, plumbing and electricity services. Should look like a man made theme park. Questions the implementation of the plan on surrounding streets. Parking will be a problem. Lighting is to contemporary and signage should be limited. Questions the present dog policy.
35	Peter Nelson	Supports the revitalising of the Cottesloe Foreshore Precinct with improved amenities, pedestrian accessibility and the effective planning of public open spaces. Suggests more trees and parks, with less cars near the beach front. Reclaim car park one for recreational use (skatepark). Get rid of the existing signage, particularly advertising. Lower light poles with a better design. Too many bins. Paid parking will subsidise the up keep and will decrease the number of people driving to the beach. Closing car park one on weekends will encourage people to walk or ride. Extend Grant Marine Park to Marine Parade and turn this into a grass area. This will take away traffic and create a running park.
36	Rob Scott	Supports the revitalising of the Cottesloe Foreshore Precinct with improved amenities, pedestrian accessibility and the effective planning of public open spaces. The remaining beach side car park turned into a terraced lawn area and relocate that parking to rail service. Introduce an electric bus service to and from the station.

37	Rosie Walsh	Questions why the proposal does not include costings, why the Town has employed multiple consultants for multiple plans, what has been the cost of consultants and why does the report include "Cott+" on all the pages. Supports protecting existing trees, no permanent buildings west of Marine Parade, focus on local use and protect the ocean/beach/dunes. There is no need to "improve the quality of experience". Supports the existing promenade, beach showers and universal access. Does not support viewing platforms or vantage points. Does not support suggested signage examples, there is too much signage and the suggestions are unattractive. Supports seating on retaining walls. Does not support shaded sunset timber deck. Does not support market series, postcode parties and wellness bookings. Does not support the possible inclusion of lounge seating, petition screening, colouring shade areas, sea container, coloured mural to road surface and event space. Supports the removal/repair of degraded infrastructure. Does not support the replacement of green bench seats, extension to the playground and chess board. No need for "extra" things to keep people entertained. Suggests maintaining Cottesloe's history and culture. Civic centre is a more suitable location for events.
38	Sally Luttrell	Supports the revitalising of the Cottesloe Foreshore Precinct with improved amenities, pedestrian accessibility and the effective planning of public open spaces. Suggests more lighting along the beach front. The timber slatted seats at Matilda Bay are breaking down and require regular maintenance. Supports the summer trials. Supports the removal of Marine Parade car park as it should be a space for people. Kids over 6 need more challenging playground equipment. Most playgrounds in Cottesloe are aimed at ages 2-4.
39	Simon Yeo	Supports the revitalising of the Cottesloe Foreshore Precinct with improved amenities, pedestrian accessibility and the effective planning of public open spaces.
40	Stewart Nicolson	Disappointed there is no mention of the ocean pool. No mention of dealing with the noisy and messy Rainbow Lorikeets down at the beach front.
41	Suzanne Watt	Investigate providing bench seats, tables and sun lounges made from recycled plastic materials. These will be robust in the marine environment and will require little maintenance compared to timber. The costs for signage are excessive. Helpful to know the costs and where the funds are coming from.
42	Trevor Kay	Supports the revitalising of the Cottesloe Foreshore Precinct with improved amenities, pedestrian accessibility and the effective planning of public open spaces.
43	Trevor Saleeba	Supports the revitalising of the Cottesloe Foreshore Precinct with improved amenities, pedestrian accessibility and the effective planning of public open spaces. Recommend better designed rubbish bins. The timber viewing platform is too extensive and takes too much away from the beach. The design for disabled access to the beach is too intrusive. The shade structure cannot be galvanised steel and the path needs to be repaved if there is going to be an ocean pool. Shady seating should not disrupt sightlines. The shade structure, petition screen and container will disrupt views.
44	Veronica Morrissey	Horrified by the proposed strategy. Understands the need for ongoing repair in a marine environment, but not to this scale.
45	Christian Fini	Supports the revitalising of the Cottesloe Foreshore Precinct with improved amenities, pedestrian accessibility and the effective planning of public open spaces. Proposed bins are ugly. Wayfinding examples - architectureau.com/organisations/buro-north/ . Suggested Council consult with groups responsible for the Peth cultural precinct to get tips on place activation.
46	Alessio Fini	Supports the revitalising of the Cottesloe Foreshore Precinct with improved amenities, pedestrian accessibility and the effective planning of public open spaces. Consider the use of iconic signage.
47	Gail and Chris Lee	Car park one is consistently and constantly used, removing the car park will put pressure on parking in nearby streets. Tree planting at car park one will be an environmental bonus. Keep signage text simple and no more than what already exists. Does not support speed bumps or chicanes. Does not support the multistory development as it will act as a wind tunnel. Wheelchair friendly paths, crossings and general access is needed.
48	Suzanne Fielding	Concerned by the lack of café/drink facilities.
49	Chris Wiggins	Need to provide more waterfront facilities. Supports the redevelopment of Indiana's, Barchetta, new cafés, change rooms and amenities. Sharing amenities with non-residents and tourists generates more variety and the quality of options. Add new principal that "Plans should maintain Cottesloe's sense of place and coastal village character." Prefers the use of limestone. There is no evidence to support the statement that Sweeping Gum trees have a lifespan of over 40 years. Does not support the flat and angular timber. The path for wheelchair access is too long to push a wheelchair (attached drawing). Provide a cost estimate and benefits summary for each proposal.

50	Bill Hazell	Supports the revitalising of the Cottesloe Foreshore Precinct with improved amenities, pedestrian accessibility and the effective planning of public open spaces. Materials need to be able withstand wind damage. Minimise the visual impact of signs. Supports the summer trials as long as the containers do not make the beachfront look like a building site.
51	Barb Dobson	More trees along Marine Parade. No boardwalks through the dunes. No development west of Marine Parade. No theme parks. Supports closure of car park one. Reduce the speed limit along Marine Parade and leave it two way. Do not close Marine Parade during Sculpture by the Sea. Make it safer for cyclists. Widen the footpath to accommodate pedestrians/cyclists/scooters/skateboarders. No more public toilets. Keep the same fish habitat protection signage. Install lighting at the playground. Suggests a marine themed festival or seadragon festival.
52	Fulvio Prainito	Do not allow tour or booze buses to park along Marine Parade except in front of the golf course. Avoid short term parking in front of homes or alfresco dining areas as this is a health issue. Close car park one. Relocate parking away from residents. Reduce speed limit along Marine Parade by removing median strip and car bays on the road. Provide parking permits to residents along Marine Parade. Keep Cottesloe natural but update the infrastructure. More trees for shading and seating underneath. No development west of Marine Parade. Car parking and services along Marine Parade be underground.
53	Bob and Margaret Morrison	Signs should not be over complicated or obtrusive. No reason to relocate the pavers. No reason to move rock or plaque. Items 29 - 38 should remain, only upgraded if necessary. Keep in mind strong wind conditions, shade/shelter illustrated looks too flimsy. Make sure the signage does not block any views. Does not support the summer trials. Does not support the sea container. Does not support the proposal to convert street parking bays to seating/shade areas.
54	Grace Westlake	In recent years Cottesloe has become more crowded, forcing residents to go to other local beaches. The events make it difficult to find parking close to the beach. Does not feel safe walking at night due to encounters with drunk and disorderly people. Lots of litter that is detrimental to marine life. The beach front would not be able to withstand the foreshore developments because it would increase the number of people to the area. Does not support the proposed changes to car park one as it will attract more people and compromise the beautiful beach.
55	Helen Sadler	Supports the summer trials. Would like to see consolidated bike parking close to the beach, some of the space from car park one being used for separate bike traffic from the footpath, traffic management trials and increased ACROD parking. Suggests that the planting of adjacent dunes and preservation of rocks be included in the broader scope of works for the project. Rationalisation of signs in order to reduce the total number of signs. Supports increased seating under trees. Materials need to be able to withstand strong winds. The cost of maintaining wooden structures needs to be considered.
56	Jaime and James Atkinson	The plan should consider a permanent or seasonal structures west of Marine Parade. This is an opportunity to provide more beach front cafes, bar or pop-up space. The plan should set sights above being local-centric and consider a high quality design/architecture that can promote Cottesloe to the state. The boundary study area should include car park two, Marine Parade, the entire foreshore area, the north west corner of Sea View golf club and Muderup rocks/Cottesloe SLSC. The study area should be considered as "stage a" as this is only the first stage of the works. Stage a should include rebuilding the play equipment at the northern end of car park one, including new lighting. Inclusion of the north west corner of the Sea View golf club represents an opportunity to provide additional services (retails, cafe, skatepark). Beach paths should have the path numbers at the beach end as well as the footpath. Supports the removal of the timber pergola out the front of Indiana. Bike racks made of timber would reflect the Cottesloe atmosphere and will cater for bicycle users. A good example of pathway railways is Rottnest Island. Questions why the proposed shelter and seating is part of the "future" plan and if the main junction point of Cottesloe Beach be smaller. Consider an alternate design for shade/shelter that represents a coastal feel. Suggests the location of signage be more clearly defined. Signage should also have a coastal feel. Suggests water based activities in the ocean be explored. Suggests the summer trials consider a pop-up skatepark. Suggests the removal of parallel parking on Marine Parade to encourage alfresco seating.
57	Janice Rooney	Supports the revitalising of the Cottesloe Foreshore Precinct with improved amenities, pedestrian accessibility and the effective planning of public open spaces.

58	Natalie Kendal	The plan only addresses the most urgent items requiring repair/upgrade, would like to understand the overall plan. Any renewal should include a modern and unique design. For example, The Gap in Albany, City Beach upgrade and the new ANZAC museum in Albany. Suggests being more urban/inner city in nature and the use of timber is dated. Suggests being busy in appearance will overwhelm the area and detract from the view. Look at St Kilda for inspiration. Timber will be hot to sit on and is not a natural material that tolerates coastal conditions. Increased shade is important, however, the beach shelters should look minimal/modern. Suggests more connection with the beach (viewing platforms etc.). Would like to see an upgrade/widening of pedestrian footpaths. Supports the summer trials and the universal access upgrade.
59	Mark Westlake	Cottesloe should be primarily for Cottesloe residents. Opposed to any actions that will attract more visitors to Cottesloe and increase traffic flow. Will put pressure on already scarce parking and attract people for entertainment. Does not want rates to be spent on facilities for non-residents. Do not turn the beachfront into a theme park making it difficult for residents to enjoy the suburb. Suggests basic maintenance and a slow evolution, not a drastic revamping. Supports sections of residents only parking on Marine Parade.
60	Nerine Ashton	Supports the revitalising of the Cottesloe Foreshore Precinct with improved amenities, pedestrian accessibility and the effective planning of public open spaces. Supports the foreshore renewal plan and the proposed upgrade of facilities. Likes the look of the Freo Stone Travertine paving mixed with Austim Spotted Gum deckin. The wood needs to handle the constant exposure to salt. Questions whether the material will be smooth enough for kids riding their scooters along. Supports drink fountains and dog bowl. Supports shade/shelter. Supports historical and educational signage. Supports summer trials.
61	Nicole Osborne	Main concern is funding and where the funding is coming from. Council needs to be accountable to ratepayers. Questions the costs of ongoing maintenance and where these funds will come from. Questions the lifespan of the chosen equipment (bins, furniture, etc.) and if this equipment is cost effective/safe. Concerned about the large slippery dip surface seen in the pictures, the foreshore should be clear and open. Provided picture of drinking fountain from Manly Beach.
62	Philip Angers	Supports the revitalising of the Cottesloe Foreshore Precinct with improved amenities, pedestrian accessibility and the effective planning of public open spaces. If the aggregate concrete is sealed it might be slippery. Prefer more natural looking limestone blocks. Shade/shelter perspective four - could this include more seating rather than a viewing ramp. Concerned about the shade materials being removed in summer, the poles will be left looking unsightly. Unsure of tunnel slides and the umbrella shade due to the sea breeze. Supports the idea of pop-up markets, postcode parties, seafood festival and wellness bookings. Will require more lighting in the area. Suggests inviting shops from the Cottesloe village. The trial could extend to May because the weather is still great.
63	Shirley Primeau	The proposed strategy needs to be revised. Concerned the beachfront will look like a theme park and too plastic fantastic. Agrees that broken items should be replaced, but the need to replace items because they look outdated is not reasonable. The use of signage is too much both in quantity and cost. Provided signage example from Fremantle. A better use of funds would include a pedestrian friendly/biking boulevard - Claremont has successfully done this in their shopping precinct. More trees and under storey plantings. Does not support pop-up seating and umbrellas because they will break quickly and will need replacing. The toilets on the foreshore need to be upgraded as a priority. Attached example of self-cleaning toilet. The design concentrates too much on building structures rather than enhancing the natural environment. No more development on the west side of Marine Parade.
64	Stephen Dobson	New big development is not wanted. Carparking is paramount, especially parking close to the beach. Does not support summer trials. Does not support extending Barchetta. Questions the facilities for swimmers and surfers. Lower rates are wanted.

Proceed with the infrastructure rationalisation work (item 2). Proceed with the summer trials (item 6). Immediate repair on items 7 - 16 in immediate repair should be priority. Immediate removal of the shark tower base - option b to retain a small footprint and install educational sign. Supports imagery of former pool and historic beach structures. Retain timber beach structures over summer. Increase beach shade by doubling the number of cabanas. Keep the existing cabanas to complement bench seats 9 and tables 10. Immediate repair/reinstallation of drinking fountain. Supports removal of Indiana pergola and bike rack. Items 17 - 28 in relocate and interpret are supported but with minimal signage and a coordinated approach. Investigate use of chess paving. Aluminium bench seating is functional. Retaining bench seating is cost effective. Replacement or upgrade of playground equipment requires professional expertise. Investigate use of timber picnic tables. Maintain fitness equipment. Consistency of paving materials supported. Low retaining wall should be retained. Supports replacement of asphalt paving. Supports retaining trees. Supports retaining sculpture. Silver bin enclosures are robust in design and material. Supports retaining terrace walls. Supports retaining disability ramp. Supports retaining bike racks. Council needs to provide estimated costs and a timeframe. Supports Holcim 'Magnolia' washed aggregate. No need for timber decking/seating/walkways. Supports the use of Freo Stone Travertine 'Roma' paving. Does not support Rivage Sun Lounge. Does not support Preva Urbana Bench Seat. Does not support Vera Table. Supports stainless steel bike racks. Does not support timber slat fencing. Supports the use of reconstituted limestone blocks. Supports LED aluminium pole top lighting. Supports stainless steel drinking fountain. Supports bin surround. Supports new abilities ramp. Does not support proposed future shelter and seating. Supports maintaining existing promenade. Supports rectifying junction. Supports beach showers. Supports intergration of existing universal ramp. Supports re-surfacing of existing all abilities promenade. Supports all abilities showers. Does not support timber viewing platform. Supports universal access to groyne and water. Modular shades are not in keeping with the character of Cottesloe. No costs have been provided and in winter the shade poles will be an eyesore/unsafe. Does not support way finding signage. Should be less beach access signage. Supports educational signage. Protect existing Tea Trees. Cottesloe is a beach and does not require a theatrical makeover. Does not support shady seating, access stairs and the use of timber. Does not support tunnel slides. Supports the use of aluminium for the upgrade of the balustrade. Does not support lounge seating. Does not support petition screen with artworks. Suggest beach umbrellas on Napoleon Street. Suggests the sea container for Station Street not the foreshore. Does not support shade structure - retain cabanas. Supports tree planter boxes. Events should be located at the Civic Centre. Further details required on the mural to road surface. Supports pop-up seating and shade in parking bays.

Yvonne Hart - Secretary
Cottesloe Residents' &
Ratepayers Association

65

Against the proposed development. Turns the suburb into a theme park at ratepayers expense. It will crowd out residents and draw in more outsiders. It will increase rates at no benefit to residents.

66

Gunther Jank

Agree with the objectives and actions as outlined. Believe the redevelopment requires a grander plan. Questions why the Indiana toilet and showering facilities were not included which remain a disgrace.

67

Rhonda and Ron Dwyer

The strategy is great, long overdue and please get on with it. Keep the detail simple, but be bold in thinking about the public use of the foreshore and the intergration with the wider town. Review the long term extent of beachside parking. Review the extent and role of terraces. Review the possibility of a sea pool. Consider intergration of this exercise with all other wider improvements. The Foreshore Implementation Committee can review these longer term issues. Next meeting to focus on detailed summer trial concept and a schedule of recommended modifications. Remove as much infrastruaction as possible, reconsider keeping the current bins with a more elegant design, address scale/quality of lighting, work to a clear consistent palette, openness to relocating handprints and request for items to be donated to schools. Invest more in materials that will last, support for more natural limestone and review extent or provide shading of beachside timber decking. Discrete intergration into the existing groyne, improving cycle/pedestrians paths, shared zones and paid parking to fund ongoing investment. Support for more shade, a continuous shade structure, intergration of shade/deck structure to avoid heat concerns, concerns about the winter mode and more suggestions on form/shade and pole material. Minimsing signage, simple/contemporary signage design and a focus on heritage/education/way finding. Support summer trials. Questions about the extent and duration of activities, as well as the shade and shelter.

68

Deon White

Plant more trees west of Marine Parade. No permanent buildings west of Marine Parade. Focussing on local use is irrelevant as Cottesloe is significant for both residents and non-residents. Improving quality of experience is meaningless as it should be implicit. All improvements west of marine parade should embody conversation of the coastal landscape. Support improved infrastructure but do not remove existing infrastructure. Does not support drink stations, free standing drink fountains are preferred. Supports fewer signs. Use naturally occurring coastal materials with sympathetic coastal palette. Bike racks should cater for large number of bikes. No high lighting. Additional ACROD bay by the groyne. Query need for all abilities ramp to public toilets under Indiana. The timber viewing platform should be minimal. Low profile embedded wooden seating along east side of groyne, but not high timber sections. Any fencing should be functional and minimal. Does not support artwork near the groyne, rehabilitation is more important. No permanent artwork on the beach. North side of groyne is better for universal access. Shade/shelter must be removed for winter. Questions whether the poles will be removed as well. No sun shade structures on grassed terrace near Indiana. Keep it simple as this zone is busy. Indiana rubbish bins need relocating. Signage should be functional, simple, low height, low visual impact, minimal, upmarket, not plastic and not gimmicky. The message should be the focus, not the sign.

69

A A Wilson

Should remove the electrical box and old bore concrete liner within the golf course. The pine trees near the Il Lido parking are suffering and need protecting. The Australian Post letterbox encroaches on the footpath tables at Cott Takeaway. Grey concrete is better for footpaths. Priority should be installing bollards between pedestrians and cars. Does not support events. Should not reduce the car bays at the Napier Street car park. Market events better suited to the Civic Centre. Stainless steel or aluminium are more suited over timber.

70

K & B Campbell

Cottesloe Foreshore Renewal Summary Strategy - Community Feedback
Summary of Submissions Received - Closing date, 23 October 2017

#	Name	Summary of Comments	Staff Comment
1	George Grundy	Supports the revitalising of the Cottesloe Foreshore Precinct with improved amenities, pedestrian accessibility and the effective planning of public open spaces.	
2	Jamie Fini	Supports the revitalising of the Cottesloe Foreshore Precinct with improved amenities, pedestrian accessibility and the effective planning of public open spaces.	
3	Jill Hugall	Supports the revitalising of the Cottesloe Foreshore Precinct with improved amenities, pedestrian accessibility and the effective planning of public open spaces.	
4	John Beltman	Does not support item 34, the replacement of fitness equipment unless it is replaced by newer/identical equipment. Believes the Cottesloe fitness equipment is the best in Perth because it is made of wood, it has instructions, it is durable, simple for any user and invites people in. Suggests to keep in mind that any fitness equipment has instructions, is accessible, use general equipment, no barriers, made from materials that won't heat up from the sun and is under natural shade.	
5	Lew Smith	Does not support the reduction to parking and the replacement of bays with shade/shelter options. Questioned whether local businesses/nearby residents have been consulted. Marine Parade car park one is used both in summer and winter, and provides access to the beach/nearby facilities.	
6	Party Charter Perth	Application for position of café bus at mark six in the car park opposite Cottesloe Beach Hotel. Have been operating opposite the Beehive Primary School with lots of families, cyclists and pedestrians stopping for a drink. Would suit the size and intended purpose of the sea container proposal. Can commence food trials offering different cuisine, bus can be leased by local businesses and the bus can be a hub for meeting people. Would like to be considered for this proposal.	
7	Steve Cartledge	Supports the revitalising of the Cottesloe Foreshore Precinct with improved amenities, pedestrian accessibility and the effective planning of public open spaces. More beachside restaurants, bars and green spaces, rather than parking bays. The pier and Indiana's needs redevelopment.	
8	Garry Baverstock	Supports the current approach for foreshore improvements. Supports the process and supportive of the team selected to see it through.	

Cottesloe

Evolving an Icon

Cottesloe Foreshore Renewal Summary Strategy

September 2017



Town of Cottesloe

01 Introduction

Cottesloe is a home to many and an icon to many more. Cott has evolved over time and has undergone many changes since its establishment. The opportunity now exists to design, trial and test a variety of design options that will provide the community with more benefit, clearer vision and greater comfort to pursue possible improvements to the Foreshore.

The Town of Cottesloe Councillors with the guidance of the Councils Foreshore Implementation Committee have already identified 5 key areas of immediate focus, they are:

1. Reviewing and rationalising the foreshores existing infrastructure and materials,
2. Providing all abilities access to the groyne, beach, and ocean,
3. Providing improved public shade and shelter to parts of the beach and foreshore,
4. Providing a suite of signage to suit Cottesloes functional needs and local character,
5. Providing summer trials focussed on pedestrian and cycle friendly activities in place of some cars.

Guiding Principles

- a) Protect existing trees
- b) No permanent buildings west of Marine Parade
- c) Focus primarily on local use
- d) Improve the quality of experience
- e) Protect the ocean, beach, and dunes



Masterplan

- STUDY AREA BOUNDARY
- ✱ CONSOLIDATED SIGNAGE AND WAYFINDING
- KEY SUMMER TRIALS LOCATIONS
- SHADE STRUCTURE REVITALISATION
- ALL ABILITIES ACCESS



02 Infrastructure Reduction

Over many years Council has undertaken a variety of necessary upgrades to fix identified issues as they have occurred over time. A review of all of the various materials and elements currently in the foreshore has the aim of rationalising and consolidating the colours, elements and materials into a smaller selected suite that meets Cottesloes needs and reinforces its character.

Below is a summary of the various materials and elements have been reviewed, photographed and assessed. For more information please access and review the following documents located on Councils webpage;

- 1) Cottesloe Foreshore Renewal Infrastructure Reduction Strategy August 2017 Rev A
- 2) Infrastructure Review Plan CBF-RR-01 Rev A 7th August 2017

IMMEDIATE REMOVAL
TO BE COMPLETED WITH SUMMER WORKS

IMMEDIATE REPAIR
TO BE REPLACED / UPGRADED ULTIMATELY

RELOCATE / RE-INTERPRET
TO BE STAGED WITH SIGNAGE STRATEGY

RELOCATE / RE-INTERPRET
TO BE STAGED WITH SIGNAGE STRATEGY

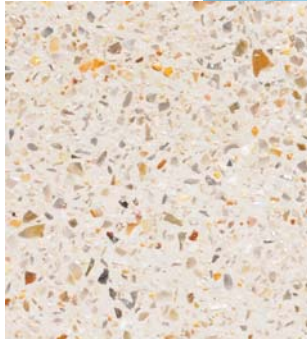
REPLACE / UPGRADE
TO BE STAGED WITH FUTURE WORKS, NOT CRITICAL

RETAIN
TO BE RETAINED AND PROTECTED DURING CONSTRUCTION

Possible Materials 03

The proposed style of replacement materials and elements are indicated on this page which provide a range suitable to Cottesloes character, climate and needs. All costs and rates quoted exclude GST.

Surfaces



Holcim 'Magnolia' Wahsed Aggregate Concrete

- Colours of mix and aggregate tie into coastal character.
- All concrete to be sealed.
- Concrete mix is locally sourced and readily available.



Austim Spotted Gum Decking

- Spotted Gum is durable and suited to coastal environment.
- Timber is termite resistant and available locally
- Life span of over 40 years.



Freo Stone Travertine 'Roma' Unit Paving

- Coastal character.
- Low maintenance.
- Proposed to use in key plaza locations.
- Compliments selected timber.

Seating



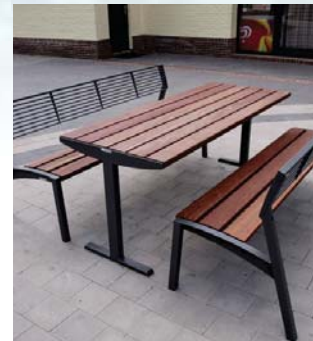
MMCite Rivage Sun Lounge

- Lounge seating to be located in key locations.
- Timber to be selected to be suitable for coastal environment.
- Option to include side table and arm rests.



MMCite Preva Urbana Bench Seat

- Seating to be upgraded in order of priority of existing seating.
- Plaques of recognition currently on seating can be relocated.



MMCite Vera Table

- Picnic table to be hardwood suitable for coastal environment consistent with other seating.
- Seating to be modified to allow wheelchair use of picnic table.

Bike Stands



Street Furniture Australia Stainless Steel 5 rack Bike Stand

- Matches bike stands along foreshore by Town of Cottesloe.
- Grade 316 Stainless Steel.



Spotted Gum Permeable Timber Slat Fencing

- Fencing can be installed to play areas as well as high profile beach access points.
- Visually permeable

Walls



Reconstituted Limestone Random Laid Blocks in key locations

- Rough face random laid limestone face blocks in high profile areas.
- Similar to existing materials on site.

Lighting



BEGA LED Aluminium Pole Top Lighting

- Suitable for coastal environment.
- Energy efficient.
- Low maintenance.
- Adjustable brightness and array.

Drink Fountain



Landmark Products 'Foreshore' Stainless Steel Drink Fountain

- Suitable for coastal environment.
- Attachment for drink bottles.
- Dog bowl.
- Vandal Proof.

Bins



EP Draffin Manufacturing Town Of Cottesloe Bin Surround

- Suitable for coastal environment
- Matches bin surrounds to foreshore including logo
- Vandal Proof

04 Access For All

The provision of access for all to the beach and ocean is a key goal of the Foreshore upgrade. Easy direct access has been denied to some members of our community for many years.

The existing all abilities ramp installed and opened in October 2014 provides part of the solution. This new proposal aims to extend all ability access to also include:

- the Cottesloe SLSC boatshed located under Indiana Tea House,
- the existing public bathrooms under the Indiana Tea House,
- the lower beach promenade leading to the Cottesloe groyne,
- the Cottesloe groyne,
- the proposed all ability ocean access ramp beside the groyne.

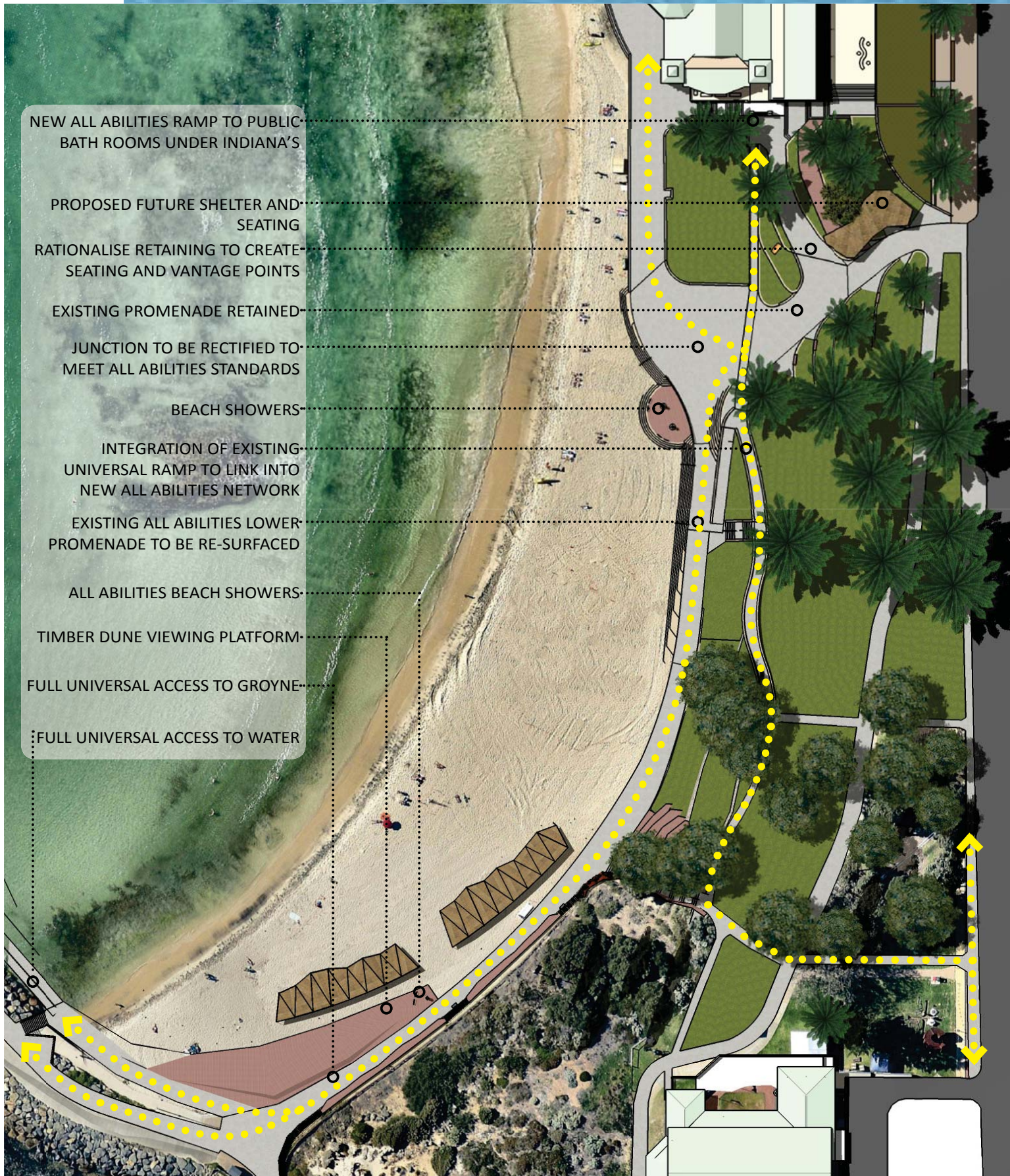
The provision of a sealed all abilities ramp over the beach and into the ocean itself is proposed in the sheltered area immediately north of the existing Cottesloe groyne. The ramp will be in accordance with Australian standards and will be open to the public.



PERSPECTIVE 1. VIEW EAST TOWARDS MARINE PARADE



PERSPECTIVE 2. VIEW SOUTH TOWARDS GROUYNE



PLAN 1. ALL ABILITIES ACCESS PATH NETWORK

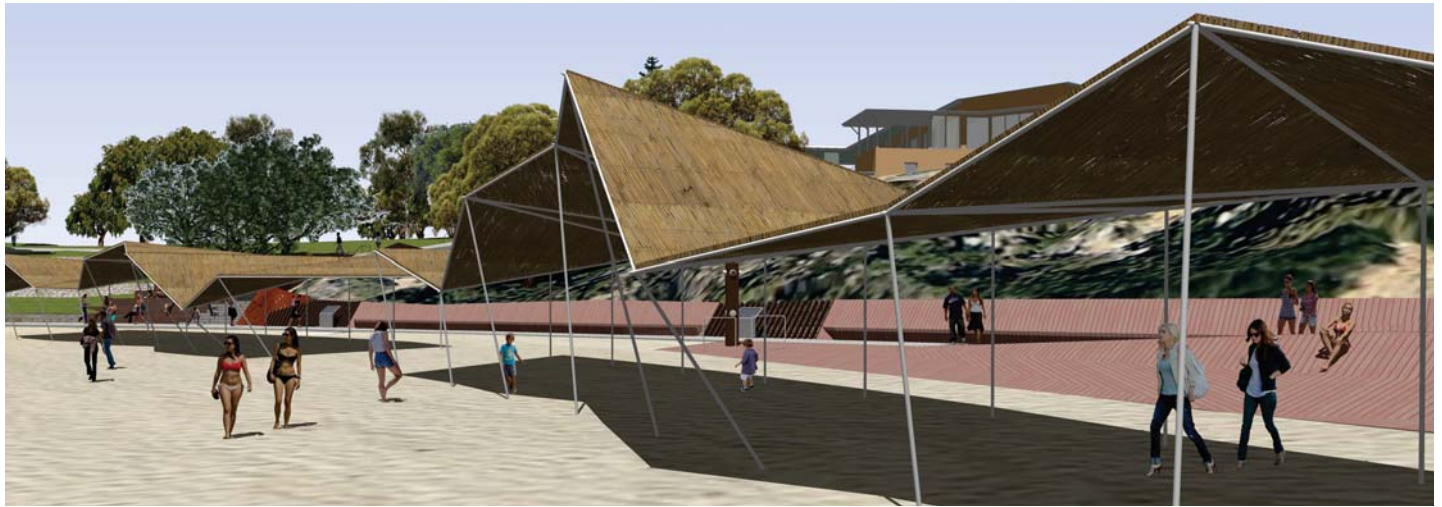
05 Shade & Shelter

The community has previously indicated a desire for permanent shade to parts of the beach and foreshore. The existing six beach cabanas are toward the end of their useful lifespan and provide limited shade. The proposal is for a more extensive and light weight public shade element to be placed to the rear of the sheltered end of Cottesloe beach.

The shelter design follows the arc of the beach, it's informal shape compliments the relaxed character of beach life, the random form echoes the shape of granite boulders forming the adjacent groyne. The roofing element will provide a variety of both solid and dappled shade.

The design is modular and can be extended to suit increased levels of community use. The materials are deliberately constructed of a systemised off the shelf elements that require normal tradesperson skills including galvanised steel frame and selected light weight timbers.

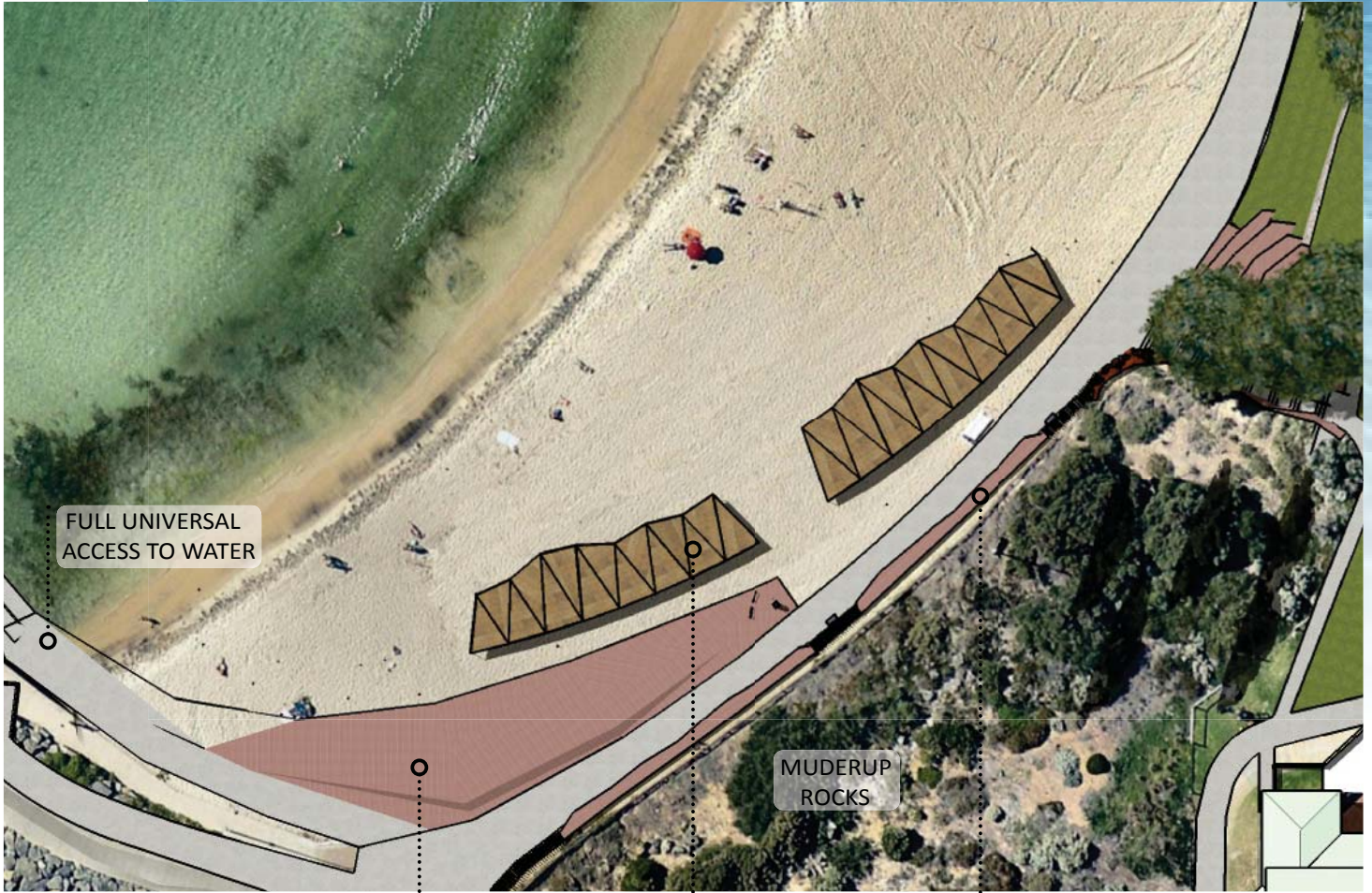
Repairs will be able to be completed by Council maintenance staff. Council staff have assessed the proposal and have indicated a willingness to either leave a more substantial shelter erected all year round, or to take down the shade cover annually for the winter period leaving only the metal frame structure in place. Council will re-erect the shade cover each spring.



PERSPECTIVE 3. VIEW EAST TOWARDS COTTESLOE SLSC



PERSPECTIVE 4. VIEW NORTH FROM MUDERUP ROCKS

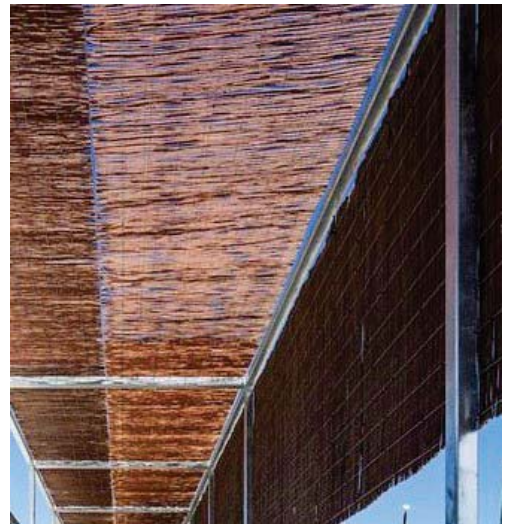


PLAN 2. SHADE & SHELTER

TIMBER DUNE
VIEWING
STRUCTURE

UPGRADED BEACH
SHELTERS

SEATING AND
SAFETY BARRIER TO
MUDERUP ROCKS



06 Signage

Cottesloe attracts a diverse range of visitors including local residents, the Perth general public, day visitors, national short stay tourists, international tourists, and seasonal backpackers and travellers. Signage has been developed to respond to this diversity and to fulfil defined role depending on the individual signs location and required content.

The signage consists of three basic forms:

- a) Larger clearly visible directional and informative signage to the more popular central area of the foreshore.
- b) More discrete locational signage to north and south Cottesloe particularly at the beach entry points
- c) Historical and Educational signage at various feature points along the foreshore



**SIGNAGE TYPE 1
WAYFINDING**

Wayfinding signage will be installed in selected key locations and will contain information relating to surrounds, amenities as well as text relating to history of Cottesloe and in particular the foreshore itself.

Signage will also include tap for filling drink bottles as well as general warning and regulations of using the foreshore.

Approximate cost of signage: \$12,500 ea + GST

Dimensions: 2.2m height, 0.6m width

**SIGNAGE TYPE 2
BEACH ACCESS**

There are a number of beach access points within the foreshore study area, currently these have a variety of different signage designs.

Signage to be consolidated to maintain emergency vehicle access code, as well as include the colloquial surf break name relating to the particular beach.

Approximate cost of signage: \$9,900 ea + GST

Dimensions: 1.4m height, 0.6m width

SIGNAGE TYPE 3 EDUCATIONAL SIGNAGE

Signage can be installed easily in a plinth format and attached to seating at various points along foreshore. Existing signage can be consolidated into a more streamline format. Approximate cost of plinth (not including bench) \$8,500 ea + GST

Dimensions: 0.35m width, 0.5m height



07 Shady Seating

The community has previously indicated their support for better use of existing low use space and an increase in shaded seating. The aim is to cater for the public by providing seating opportunities that take advantage of pre-existing shady locations. Seating shall be informal in its design in keeping with the existing relaxed beach character. The informal seating faces the beach and ocean and addresses passing pedestrian activity promoting friendly social interaction.

There are a number of locations where the opportunity exists to achieve a new shady seating outcome, in particular:

1. Adjacent to the existing maintenance and emergency vehicle service road leading down to the beach beside Indianas. The creation of low retaining walls allows informal seating, resting and waiting while taking advantage of the view while not impacting on the root systems of the existing Norfolk Island Pines. The low seating walls and steps also retain existing ground providing level access onto existing grass or mulched slopes.
2. The mulched area under the existing Tea trees adjacent to the Cottesloe SLSC beach access steps. The aim is to create a shaded sunset deck that caters for a number of users at any one time as well as catering for beach users seeking respite from the heat of the day. The use of decking bridges over the root systems of the three existing large tea trees.





PERSPECTIVE 5. VIEW EAST ALONG EXISTING BEACH VEHICLE ACCESS



PERSPECTIVE 6. VIEW EAST TO COTTESLOE SLSC ACCESS STAIRS



PERSPECTIVE 7. VIEW SOUTH TO COTTESLOE SLSC ACCESS STAIRS

08 Summer Trials

The community has indicated a desire for more public open space and upgraded public park facilities that are suitable to Cottesloe. The current proposal allows for a summer trial of various pedestrian and cycle dominated uses along the foreshore over this coming summer to test the success or otherwise of the proposal.

Local foreshore business will be given an opportunity to be part of this process in an effort to gain both their mutually beneficial support and their potential involvement. A portion of the beachfront carpark number 1 is to be allocated for the pedestrian and cycle friendly summer trials given its central location and high visibility.

In addition temporary variances to Marine Parade will be trialled to assess their viability and acceptance in the community. Vehicle access to Marine Parade will be maintained however, other pedestrian uses on verges and in parking bay will be trialled as well as greater emphasis on cyclist access along Marine Parade. Below are some preliminary recommendations for how this space could be used;

Markets Series

We propose a series of smaller market events that offer a diverse range of markets over the season. Plant / flower market, hawkers market, organic / growers market, art market and a car boot sale could be part of this series. We suggest a strategy that gives current brick and mortar businesses first right of refusal on being involved in the event, rather than competing with it. These events could feature local musicians, live visual artists, street performers and family activities.

Postcode Parties

This concept is based around a series of events that focusses on entertainment for local residents. The series would act as a conceptual marketing umbrella, under which a selection of diverse events can take place. These events could be anything from Sunday jazz afternoons, a kite festival, busker afternoons, mini golf tournaments, local beach cricket competition. These events would be marketed locally and used as a way of promoting community and a sense of place.

Seafood by the Sculptures

During the Sculptures by the Sea, brick and mortar businesses are at capacity for a majority of the day and night. During this peak time, there may be an option to provide further access to food and beverage to the thousands of people that visit the site daily. One suggestion we have is a seafood festival that celebrates local produce, chefs, beverages etc and gives tourists a secondary reason to visit and stay on the beach.

Wellness Bookings

Another issue that currently exists along the Cottesloe coast is a lack of home for yoga / exercise groups to run classes. Currently there are options for park hire etc, but the costs are out of reach for most commercial groups to pay. There may be space in the programming of this project to allow these groups to 'book' the space at a rate that is commercially viable.



ARTIST'S IMPRESSION ONLY



POSSIBLE INCLUSIONS:

- ① TUNNEL SLIDES FROM TERRACES TO BEACH
- ② UPGRADE BALUSTRADE TO TOP OF WALK WAY
- ③ RANDOM RE-LOCATABLE LOUNGE SEATING
- ④ PETITION SCREENING WITH ARTWORKS TO FACE
- ⑤ COLOURING SHADE AREA MIRRORING BEACH UMBRELLAS
- ⑥ RE-LOCATABLE SEA CONTAINER THAT CAN BE LEASED BY LOCAL BUSINESS FOR POP UP SHOPS
- ⑦ SHADE STRUCTURE TO REFLECT PROPOSED STRUCTURE ON BEACH
- ⑧ RE-LOCATABLE TREES IN PLANTER BOXES
- ⑨ EVENT SPACE WITH SEATING
- ⑩ MURAL TO ROAD SURFACE ON MARINE PDE
- ⑪ POP-UP SEATING AND SHADE IN PARKING BAYS



09 What Next?

1. Council to obtain Community Feedback on this document.
2. The Foreshore committee to review the community feedback and provide a recommendation to council for endorsement.
3. Council to vote on acceptance or amendment.
4. Proceed to enact the first stage of works in three distinct parts.
 - a. Proceed with the Infrastructure rationalisation work effective immediately (item 2 in this document) to make the foreshore safer and more functional and attractive.
 - b. Proceed with the summer trials (item 6 in this document) located in Carpark number 1 and along Marine Parade. These will commence in late January through to mid March. Council will be provided with a review and recommendation at the close of that period.
 - c. Proceed to detail and document and obtain quotes for the disability access works (item 3 in this document) and the Beach shelter works (item 4 in this package) and the foreshore signage (item 5 in this document) with a view to construction in autumn 2018 after this coming peak summer period.



PROPOSED LANDSCAPE WORKS

LANDSCAPE & IRRIGATION WORKS: Preliminary Opinion of Probable Cost (POPC) November 2017

REV A - NOVEMBER 2017

	Item Description	AREA (sq.m)	Total ex GST (\$)	\$/sq.m	Notes
1.00	AREA 1 - ACCESS FOR ALL	3,065	\$619,566	\$202	
2.00	AREA 2 - BEACH STRUCTURES	735	\$635,212	\$864	
3.00	AREA 3 - SHADY SEATING	705	\$436,650	\$619	
AREA TOTALS		4,505	\$1,691,427	\$375	

REFER DETAIL BREAKDOWN TABS BELOW

DRAFT COST ESTIMATE ONLY

All cost estimates provided are indicative and based on sketch concepts to date.
Further refinement and design development is required to confirm any budgets.
The enclosed information should be referred to as information only.