

COTTESLOE COUNCIL NEWS

Email: council@cottesloe.wa.gov.au Website: cottesloe.wa.gov.au
April 8, 2006 Telephone: 9285 5000 Facsimile: 9285 5001

News in brief...

New sculpture – where will it go?

'CENTREFOLD' by local sculptor, Derek Grey-Smith, was acquired during Sculpture by the Sea at a net cost of \$16,200 under the Council's art acquisition policy. Now the Town must decide on the most suitable location, where it might frame the setting sun.

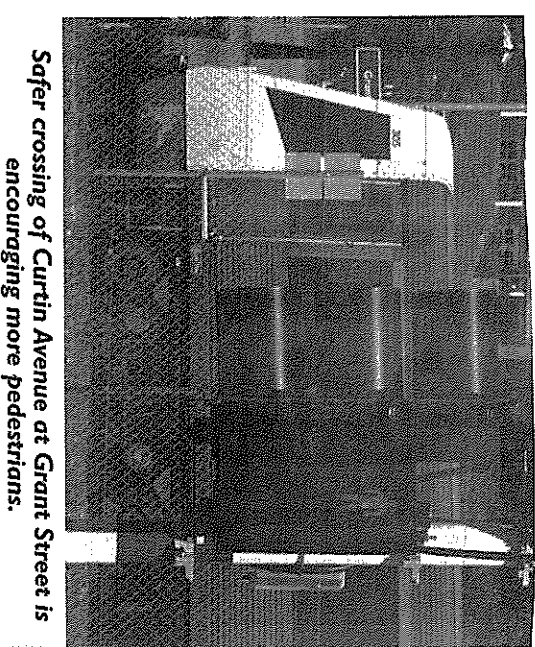
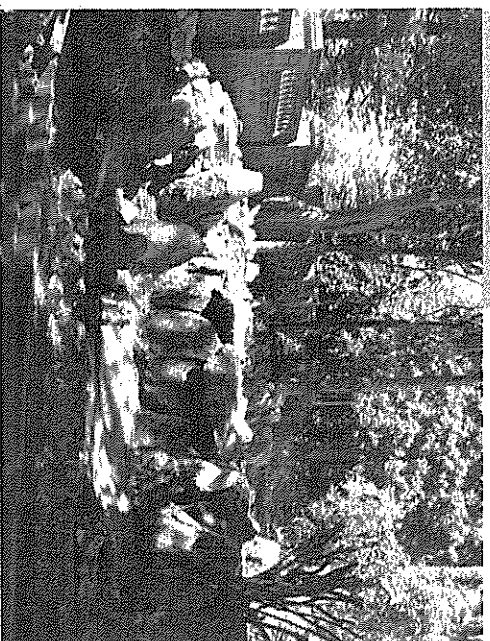
No Daylight Saving

LAST month Cottesloe Council was asked by WALGA (WA Local Government Association) whether it supported or opposed the introduction of Daylight Savings Time in this state. Cottesloe's reply was 'No' – it does not support the introduction; and also, it does not believe this is an issue which WALGA should pursue.

Dog attack

LENGTHY legal proceedings that have followed a dog attack incident in 2002 are reported in full in the minutes of the March 27 Council meeting. The case has involved considerable administrative time and costs, as well as legal costs. After reviewing the full history of the incident, Council moved to endorse action to recover debts incurred in legal action, amounting to \$4,650.

Oldham's Pond at the Civic Centre is temporarily dry for restoration. To return the water feature to its original form, some palms have been removed and will be replaced with other locally-used species.



Safer crossing of Curtin Avenue at Grant Street is encouraging more pedestrians.

New footpath at North Cott Primary?

FAST traffic along Railway Street and increased pedestrian use of the new Pelican crossing across Curtin Avenue at Grant Street has prompted a footpath request from North Cottesloe Primary School.

Council may include a new \$13,000 footpath – on the west side of Railway St, from the station to the parking area opposite the school – in its 2006/7 budget. Town staff will make a traffic management report on vehicle drop-off areas around the school.

Pelican

Councillors were told that since the Pelican crossing was installed at the junction of Curtin Ave and Grant St, more parents are walking to North Cott Primary. The 'Walking Bus' programme has also encouraged them.

However, 3,500 vehicles per day use Railway Street, and monitoring shows that 60 per cent travel above the 50kph limit; some speed at 90-100kph. Consequently, crossing to the eastern-side footpath could be hazardous.

Although the current year's budget is exhausted, the new 175-metre long path could be laid in July if included in the budget for 2006/7.

Native plantings to help water table

COTTESLOE will replace some of low-use, grassed public areas with native species and mulch, using a \$45,000 federal Community Water Grant.

"The grant is a contribution to help Cottesloe reduce the amount of bore water used for watering our reserves," said Town engineer Geoff Trigg. "It will also reduce the risk of salt water being drawn into the water table."

New planting will include 800 new native trees and shrubs.

"The mature Norfolk Island pines are a Cottesloe icon and our street tree policy and a species report, based on specialist advice, is used to protect them and a supporting framework of other suitable trees."

"Over the years some inappropriate species have been planted by well-intentioned staff and residents. Some are now creating problems, such as allergic reactions. Others have toxic leaves or bark, create major suckers and root problems, or 'self prune' in summer."

Elsewhere, traffic control features, such as roundabouts, are being planted with native vegetation and four demonstration vegetable gardens have been established to show native and other local species as alternatives to reticulated lawns. You can see these areas now, at: corner of Grant Street and Marine Parade;

Attract more avians!

'Birds of the Leighton Peninsula' is a beautifully illustrated booklet, available free. It features many of the birds recorded in recent surveys of the area; many plants of the Leighton Peninsula; and a list of native plants to attract birds to your own garden.

Birds Australia WA have produced the booklet, with Cottesloe Coastcare, Lotterywest and the support of Cottesloe, Mosman Park and Peppermint Grove councils.

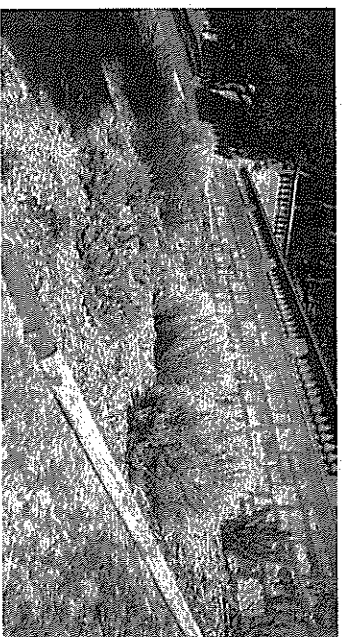
Launch invitation

Exquisite artwork for the booklet will be on display at the library (April 26 to May 9) and you can also come along to the book launch (Wednesday, May 10,

Meetings at Civic Centre

NEXT Council meeting – Tuesday April 24, at 7pm.
Committees:
Works and Corporate Services – April 19, 7pm.
Development Services – April 18, 6pm.
Planning applications for JUNE close on MAY 3.

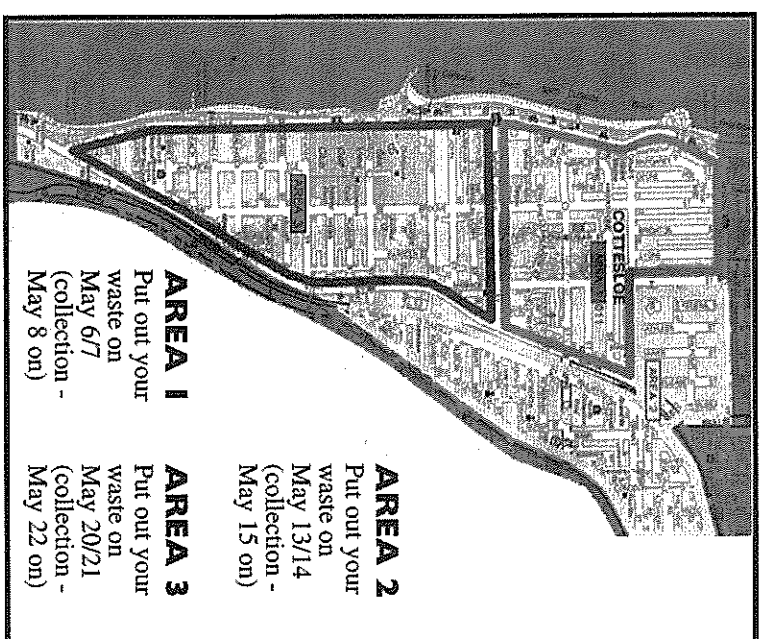
7.30pm) at Cottesloe Council Lesser Hall. Get your copy there, and meet members of the WA branch of Birds Australia; they'll be more than happy to discuss any aspect of the bird life of the area. The presentation will be followed by light refreshments.



Newly planted area by the Civic Centre wall in Napier Street

GREEN and BULK WASTE ONLY COLLECTIONS in MAY

Please see map for your own collection dates.



Post - 8 April 2006

X2.S