

## KEY AIMS

- Rehabilitate the dune system with native endemic dune species.
- Maintain and enhance the coastal dune character of the park.
- Cater for a safe broad range of park uses and park users.
- Highlight the historical and ecological significance of the dune park.
- Consider and cater for an appropriate interface to adjacent land uses.

## IMAGERY PRECEDENTS



## THE DESIGN

- Encourage the user to experience the characteristics of Cottesloe's former dune character through a variety of design elements.
- Provide all ability and maintenance access through the park.
- Create nodes of interest and rest throughout the site, with interactive signage and varying seating elements and shade.
- Provide opportunity for future enhancement such as sculpture gardens, outdoor educational excursions and community events.
- Revitalise the dune parks habitat and ecology with local endemic species.
- Passive surveillance through view corridors & access from adjacent areas.
- Planting zones will reflect dune character & various vegetation communities.

## SITE ASSESSMENT AND DESIGN STRATEGY

### Entry Point

Northern gateway.

### Vegetation Buffer

Low fire retardant species located to northern residential interface. (2,440m<sup>2</sup>)

### High Point

Potential lookout location to existing high point RL 26.00

### Revegetation

Retain existing vegetation and add supplementary native endemic species. (9,360m<sup>2</sup>)

### Conservation

Key vegetation noted for conservation by the existing Coastcare site assessment report.

### Rest Node

Existing flat zone provides opportunity for a rest point centrally located in the park. Opportunity for interpretive signage or sculpture.

### Low Flat Point

Usable open space to central area, visible from carpark. (2,195m<sup>2</sup>)

### Entry Point

Western gateway set on carpark axis view.

### Universal Path Network

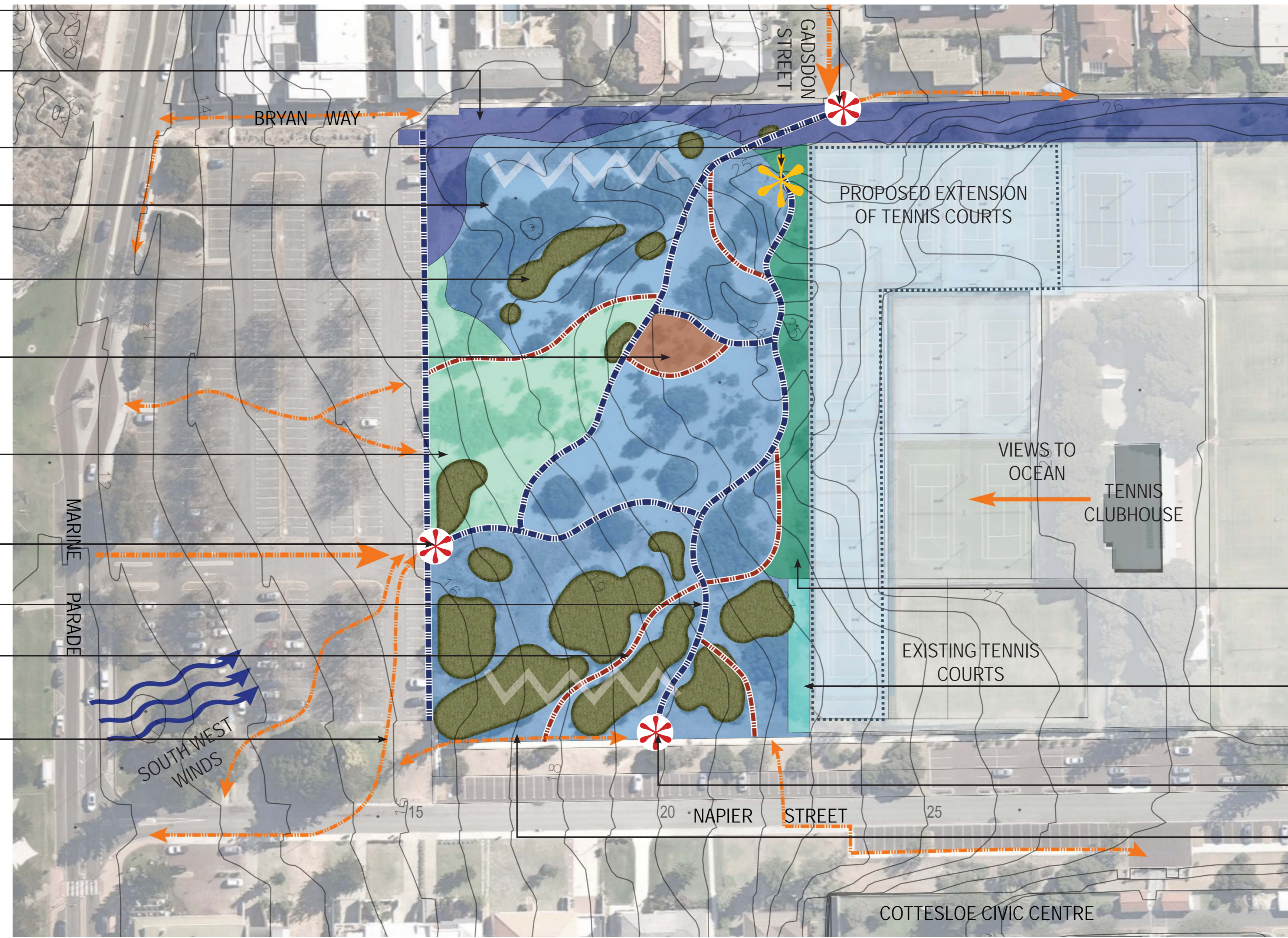
Caters for all users and maintenance.

### Informal Path Network

A secondary path network provides alternate routes through the park for the more able users.

### Site Access

Existing pedestrian path networks accessing the park from surrounding areas.



## LEGEND

- Existing Coastcare identified vegetation to be retained.
- Proposed Re-vegetation - Planting Type 1
- Proposed Re-vegetation - Planting Type 2
- Proposed Re-vegetation - Planting Type 3
- Proposed Passive Recreation
- Proposed Tall Screening Planting
- Path 1 - Universal access
- Path 2 - Secondary access
- Path 3 - External access and views across site
- Entry Gateways
- Lookout Point
- Indicative Vegetation Separation

### Embankment

Minor reshaping, stabilisation and revegetation to tennis court batter. (2,406m<sup>2</sup>)

### Buffer Zone

Protection from strong south west wind to be considered adjacent to tennis courts, as per existing. (212m<sup>2</sup>)

### Entry Point

Southern gateway links to Civic Centre.

### Buffer Zone

Consider wind protection along the southern edge through endemic planting and existing vegetation retention.

## ENTRY GATEWAYS

Indicative visible entry gateway and signage

Feature planting of endemic species

Threshold entry treatment Character Seating

## INTERACTIVE SIGNAGE

Signage describes the coastal dune system

Variety of seating opportunities

Interactive signage elements

Hard edges form maintenance borders between turf and planting

## UNIVERSAL ACCESS

Universal access through the site

Boardwalks highlight dune topography

Planted interface with proposed tennis club extension

## VIEWING PLATFORM

Ocean views and passive surveillance over park

Raised viewing platform includes educational and directional signage

## SEATING NODE

Paths, low walls and seating elements provide a barrier between lawn and endemic planting - creating a maintainable edge.

## PICNIC AMENITY AND RAMPED ACCESS

Open views from existing carpark allow passive surveillance

Amphitheatre seating caters for community events

Shade structure for public use

## PRELIMINARY LANDSCAPE CONCEPT

### Gateway 3

Gateway signage on axis view from Gadsdon st.

### Gravel Edge

Mixed gravel edge to minimise fire risk and maintain open views and passive surveillance. (833m<sup>2</sup>)

### Vegetation Buffer

Low fire retardant planting creates a buffer from the dense dune planting to reduce bush fire risk for residents in close proximity. (2,838m<sup>2</sup>)

### Habitat Planting

Zone 1 (5,811m<sup>2</sup>)

### Swale

Drainage swale accepts surface runoff.

### Node Point

Node point with seating and shelters views over park.

### Community Education and Event Space

Low limestone wall amphitheatre.

### Existing Trees to Be Retained

Irrigated usable grass area approx 25m x 40m (674m<sup>2</sup>).

### Gateway 2

Located on axis view from carpark entry.

### Maintainable Edge

Low retaining wall and footpath create a border between native planting and turf.

### Habitat Planting

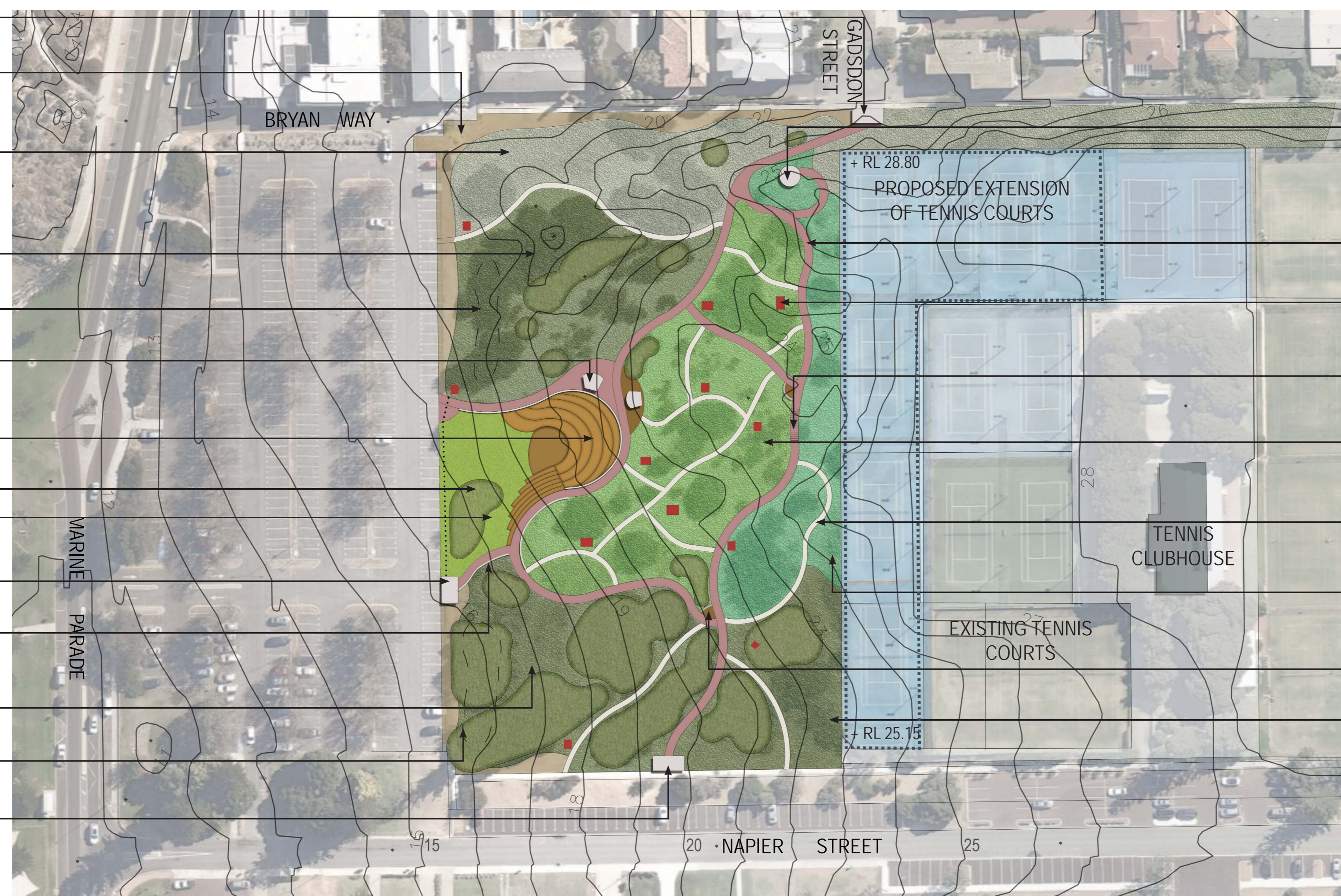
Zone 2 maintains privacy to Napier residents.

### Swale

Drainage swale accepts surface runoff.

### Gateway 1 and Signage

Links to Civic Centre



### Lookout Shelter

Lookout at existing high point with universal access.

### Universal Access

Evenly graded gently sloping paths.

### Sculpture Garden

Possible sculpture garden set in among botanic dune planting.

### Board Walk

Over low dune planting hollow.

### Botanic Planting

Botanic walk consisting of native lower height species. (2,946m<sup>2</sup>)

### Informal Path Network

Sand track access.

### Endemic Planting Buffer

Revegetation and shaping of to tennis club batter. (1,369m<sup>2</sup>)

### Educational Node

Dune and direction information node.

### Hedge Planting

Located to south east corner of park to assist in mitigating south east wind effects on tennis club.

### Endemic Planting - Revegetation

Endemic coastal dune species planted between fencing controls. Taller species to provide habitat, cover, partial screening and spatial definition to contain the central usable area.

### Endemic Planting - Batter

Native endemic coastal dune species planted to stabilise and soften tennis court batter while maintaining existing views from the tennis clubhouse to the ocean.

### Endemic Planting - Botanical Zone

Native endemic coastal dune species planted in botanic garden style zones between stabilised sand tracks, incorporating fencing controls and educational signage outlining coastal habitat, species, importance and ecology. Use lower height species to allow views over botanic planting for improved passive surveillance.

### Endemic Planting - Fire Management Zone

Native endemic coastal dune species with fire retardant characteristics planted to minimise fire risk at the residential interface.