



November 8, 2013

Attention: Carl Askew  
Town of Cottesloe  
PO Box 606, Cottesloe  
WA 6911

Dear Carl

**RE: Request for Parking Permits on Grant St & 2 Crossing Islands on Eric St and Curtin Ave**

I would like to thank you and the Cottesloe Council for the continuing support you have provided to North Cottesloe Primary School over many years.

The school in partnership with its community encourages the physical well being of our students through daily exercise and we have a school vision to develop an awareness of sustainability, social responsibility and a global understanding. This is supported through our school eco rangers and the promotion of students walking or riding to school. We already have over 50% of students and families supporting this initiative by walking with their children or encouraging children to ride to school each day.

The council mission to use sustainable strategies is shown in Cottesloe's vision for cycling: "A safe and accessible town where people from all sectors of the community cycle for transport and enjoyment."

In the 'Council's strategic plan' it also promotes "Sustainable development: To embrace and integrate sustainable development principles including social, economic, environmental and cultural aspects when planning for the district."

We believe there are a number of ways Cottesloe Council can help the school to achieve stronger support for our 'Active Transport Program' initiative including encouraging students and families to walk or ride to school. We would like your consideration of supporting improved safety at crossing points on busy streets and formalising places where school families can park cars away from the school and walk.

While the school community actively promotes "walking or cycling to school" there is reluctance for parents to allow children to walk or ride from South/West side of the Eric Street & Curtin Ave intersection as they have to cross Eric Street without assistance.

Last term the school and community put in an application for an additional traffic warden to support children crossing Eric Street, near the Scout Hall (see map below). However we did not quite have the consistent number of students to support the crossing being manned by an employed traffic warden.

It is a bit of a chicken and egg situation, where a traffic warden is needed for families to consider it safe for students to cross Eric Street near the Scout Hall, but we need a consistent number of students crossing to show that we need a traffic warden.

We would like your consideration of supporting an island being installed at Eric St (near Scout Hall) so that students walking unaccompanied are able to have a safer option of only needing to look one direction for traffic at a time. The island would allow students to cross the first side of the road and then reassess the other side of the road. This safer option for students crossing, we believe will encourage more students to walk or ride to school on a regular basis and would allow us to successfully apply for a traffic warden at this point.





We would also like your consideration of supporting an island being installed at the current traffic warden crossing on Curtin Ave (near Florence Street). Although it is a controlled crossing it is seen as not being ideal due to the merging of southbound traffic just after the crossing. This on many occasions causes a dangerous situation where vehicles try to pass stopped traffic on the inside as their view of the traffic warden is blocked by the cars in front(see attached pictures).

A traffic island at this point, that does not allow cars to pass on the inside, would significantly improve safety.

Finally we are also requesting an allocation of permits for parents parking on the Grant Street Median Strip while they "Park and Walk" their children to and from school. It could have limited access times to only school days and morning and afternoon drop off and pick up times.

In 2014 the schools Early Childhood enrolment has increased and we also have an additional Kindergarten and Pre-Primary class on site at the newly renovated WANSLEA building. The Department policy is students in Kindergarten and Pre-Primary must be dropped off and picked up from the classroom each day. This is going to put additional demands on the limited parking surrounding the school and therefore is another important consideration to support our requested proposal.

Thank you for your consideration of these three initiatives to help support our school and Cottesloe community sustainability strategies and healthy lifestyle options.

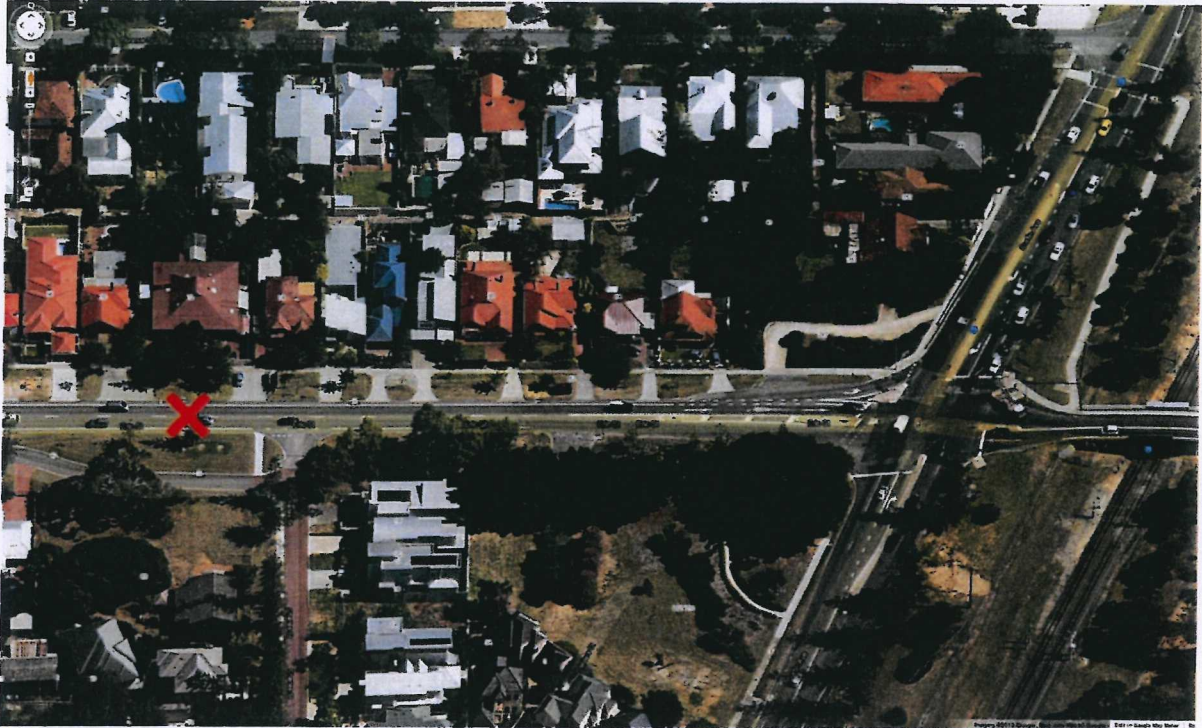
A handwritten signature in blue ink, appearing to read "Richard Atkins".

Richard Atkins  
**Chairman**  
**North Cottesloe Primary School Board**

A handwritten signature in blue ink, appearing to read "Kirsty Barrett".

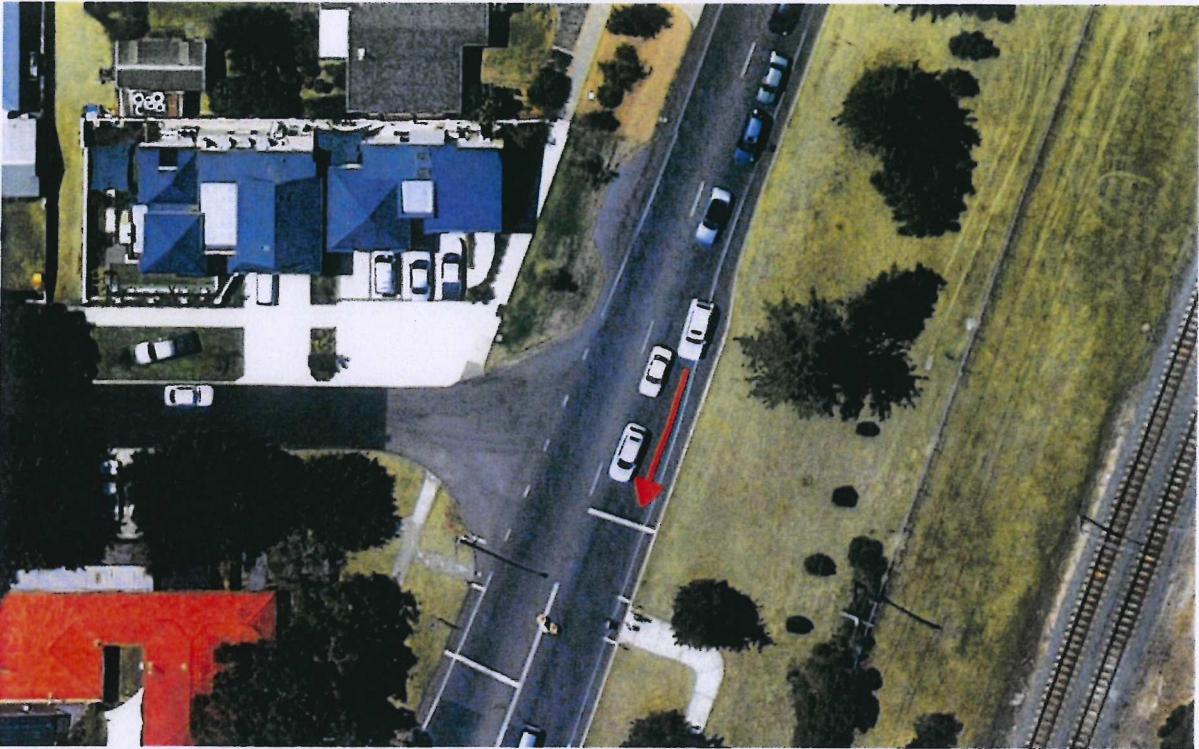
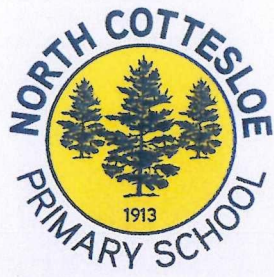
Kirsty Barrett  
**P&C President**  
**North Cottesloe Primary School**



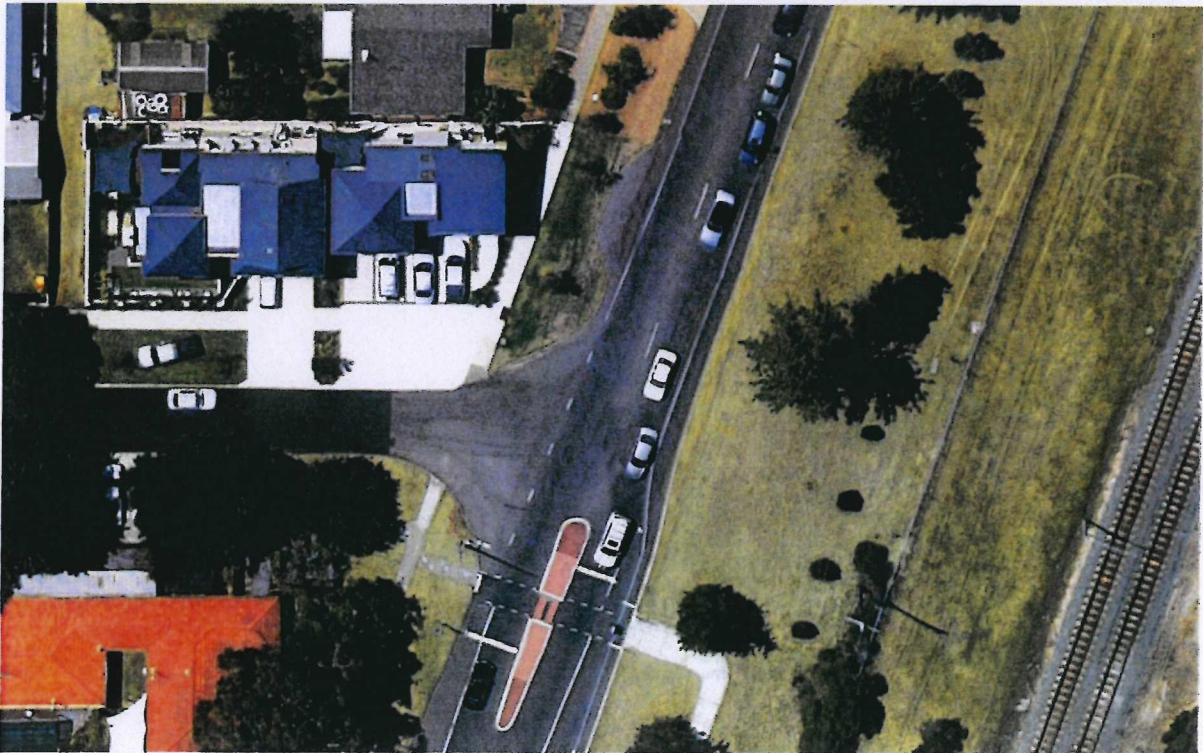


#1 Proposed location of new island on Eric Street near Scout Hall



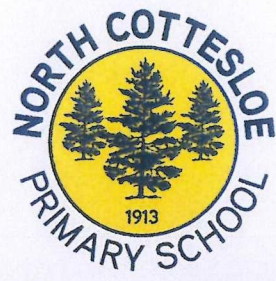


#2 Southbound cars passing on inside causing dangerous situation at Curtin Avenue Traffic Warden crossing.



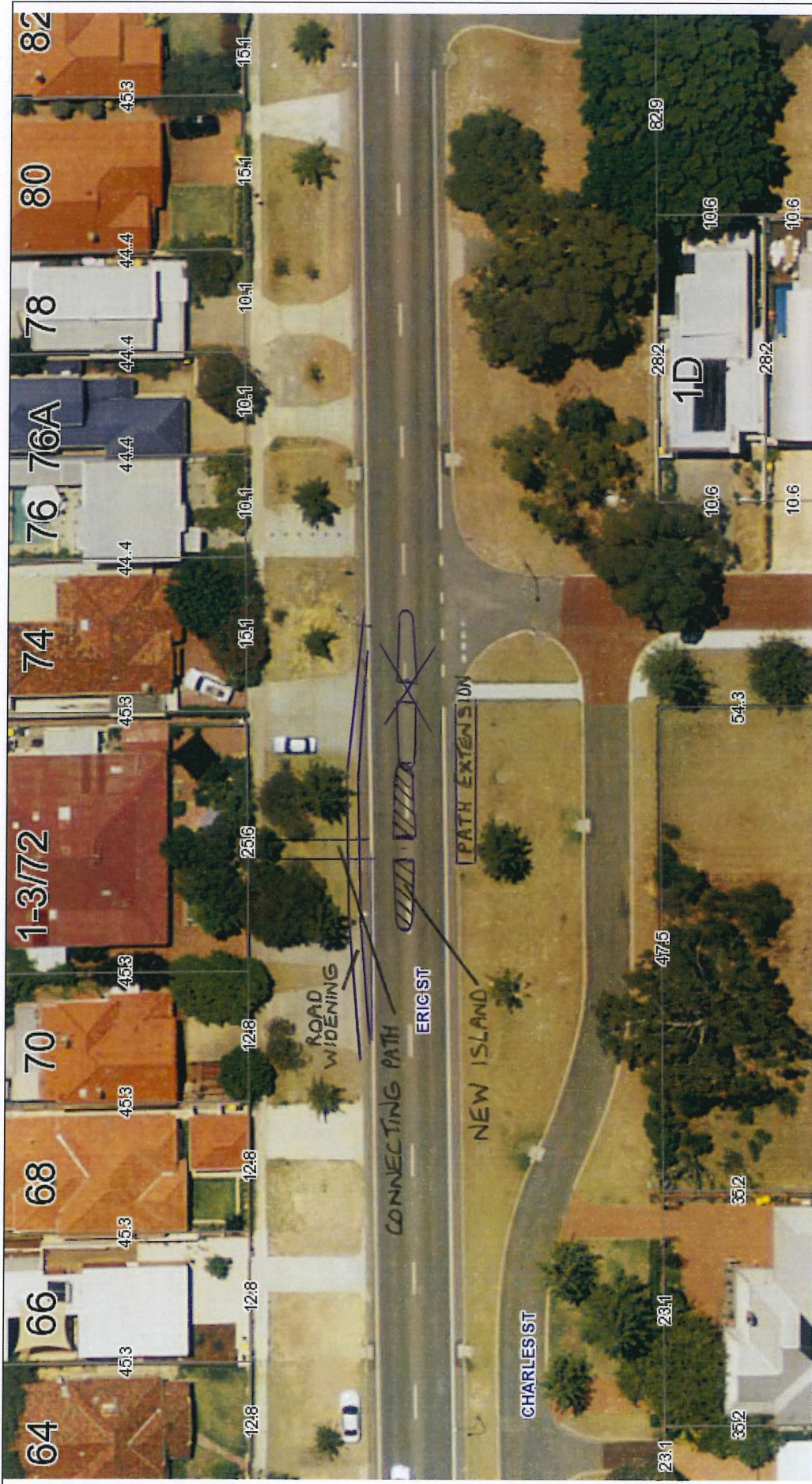
#3 Proposed island at Curtin Avenue Traffic Warden crossing.





#4 Grant Street Park&Walk permit area





**PROPOSED CROSSING ISLAND  
ERIC ST AT CHARLES ST.**

The Town of Cottesloe does not warrant the accuracy of information in this publication and any person using or relying upon such information does so on the basis that the Town of Cottesloe shall bear no responsibility or liability whatsoever for any errors, faults, defects or omissions in the information.

Scale 1:564

Wednesday, 27 November 2013

